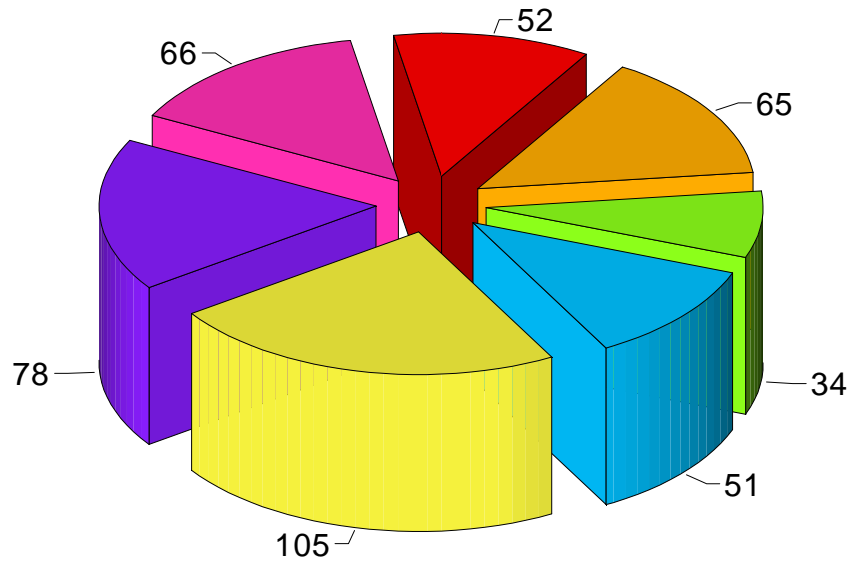


# DES - PIES

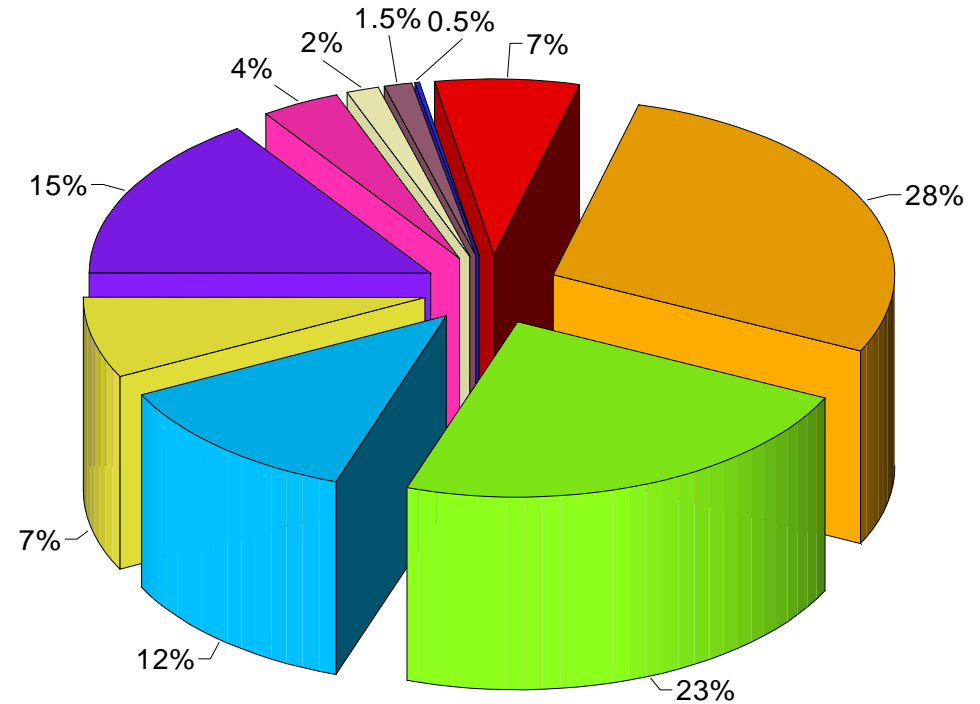
## Number of Posts by Division



- Business Development
- Cemetery & Crematorium
- District Surveyors
- EH & PP
- Highways and Cleansing
- PH & VS
- Tower Bridge

## Departmental Grade Profile

- A
- B
- C
- D
- E
- F
- G
- H
- I
- J

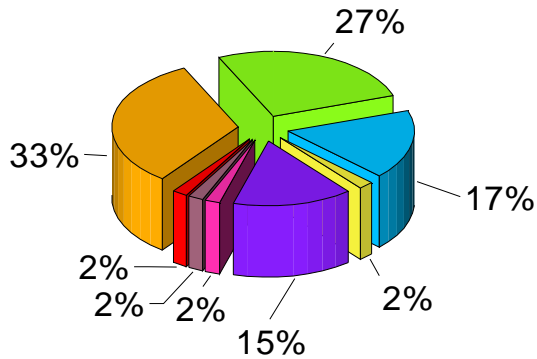


Total number of posts: 451  
(March 2010)

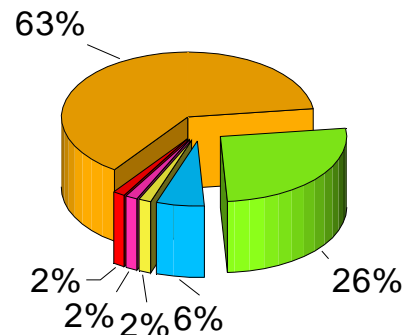
# DES - PIES

## Grade Profile by Division

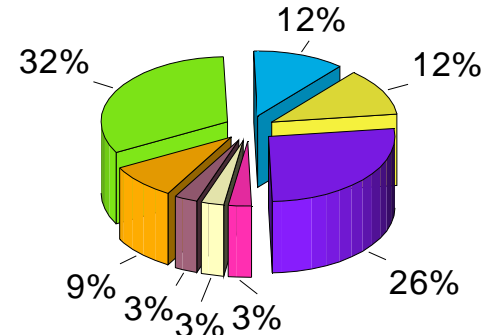
**Business Development**  
(Total number of posts: 52)



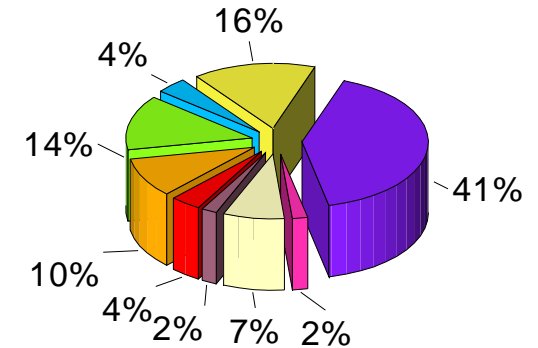
**Cemetery & Crematorium**  
(Total number of posts: 65)



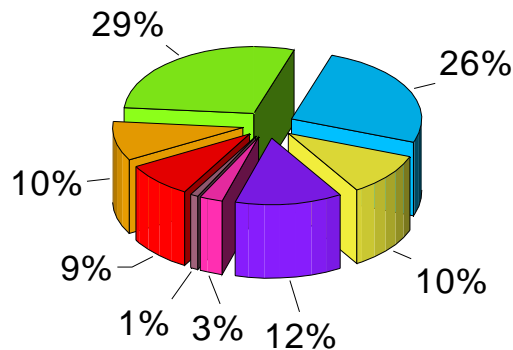
**District Surveyors**  
(Total number of posts: 34)



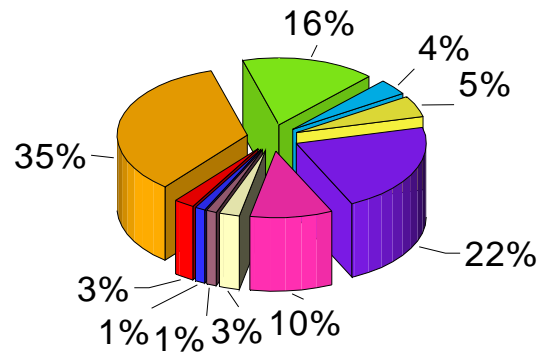
**Environmental Health & Public Protection**  
(Total number of posts: 51)



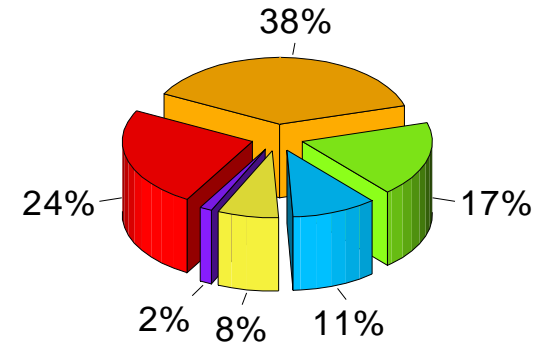
**Highways & Cleansing**  
(Total number of posts: 105)



**Port Health & Veterinary Services**  
(Total number of posts: 78)



**Tower Bridge**  
(Total number of posts: 66)

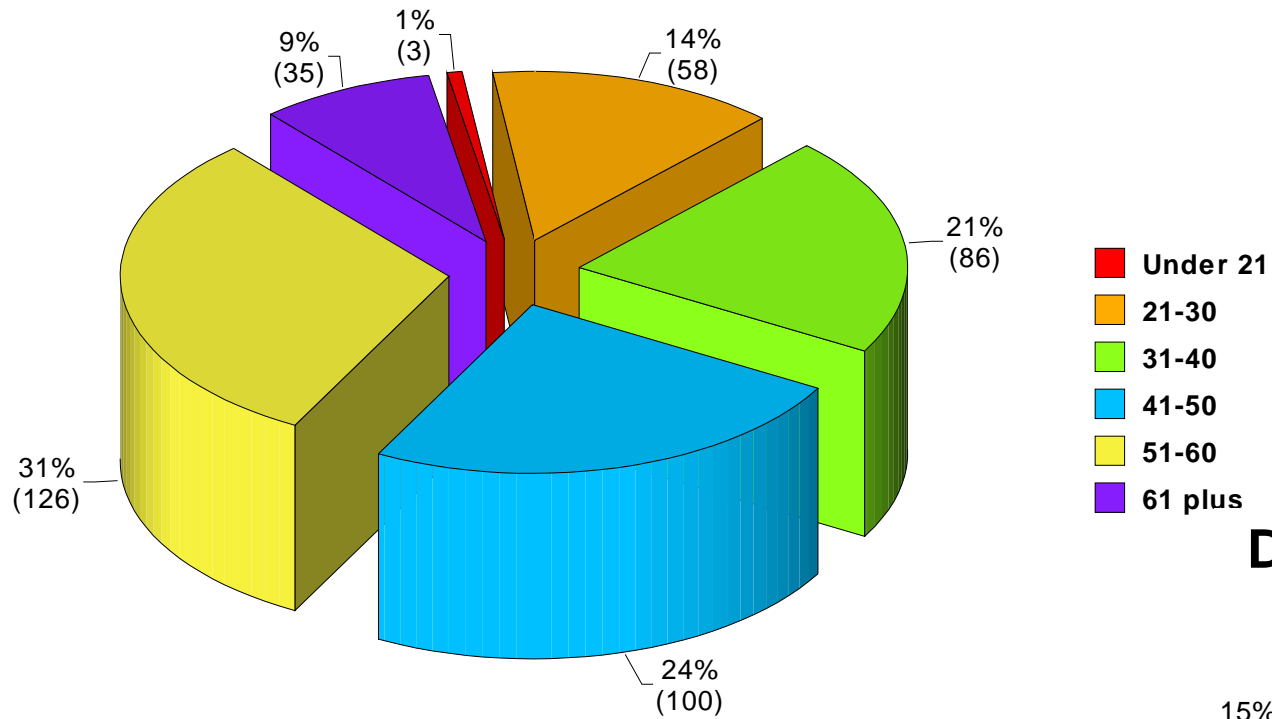


Total number of posts: 451  
(March 2010)

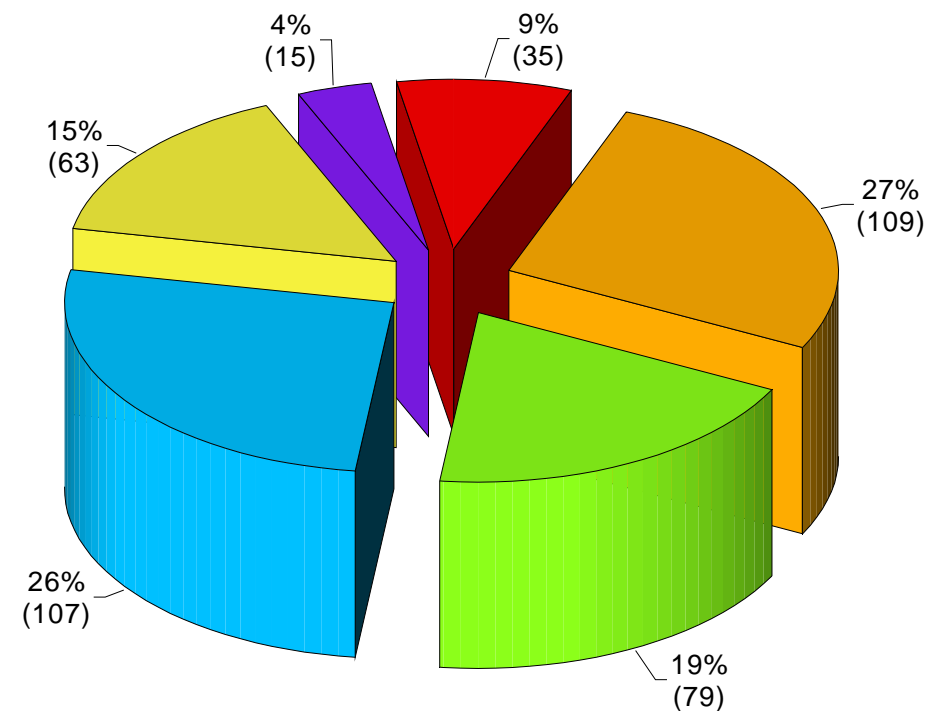


# DES - PIES

## Departmental Age Profile



## Departmental Service Profile



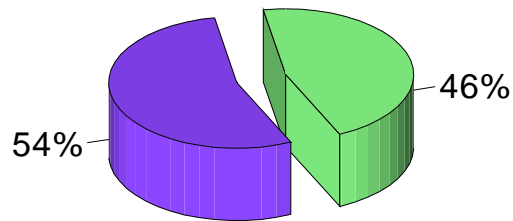
Total number of staff: 408  
(March 2010)

# DES - PIES

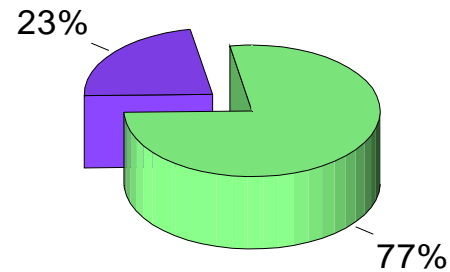
## Gender by Division

Male Female

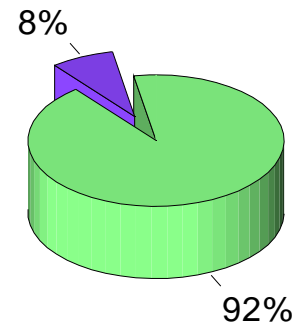
**Business Development**  
(Total number of staff: 48)



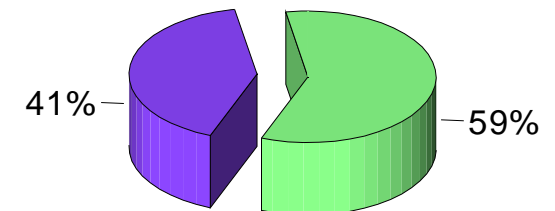
**Cemetery & Crematorium**  
(Total number of staff: 62)



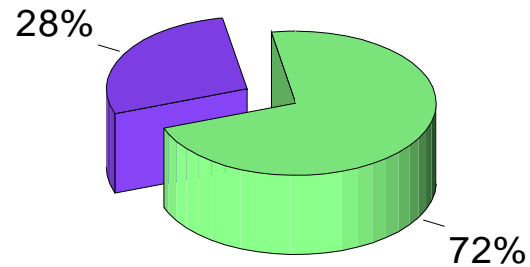
**District Surveyors**  
(Total number of staff: 25)



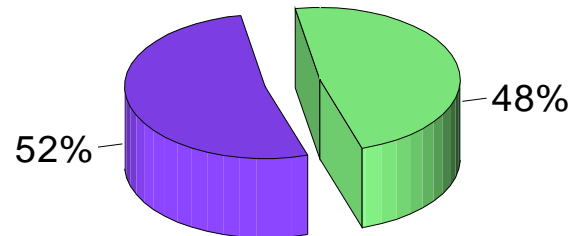
**Environmental Health & Public Protection**  
(Total number of staff: 46)



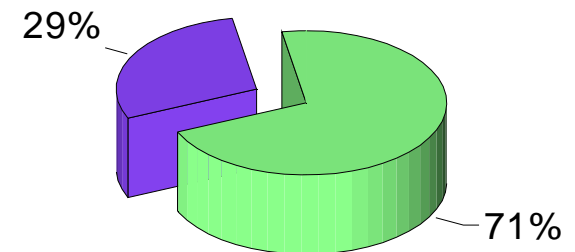
**Highways & Cleansing**  
(Total number of staff: 97)



**Port Health & Veterinary Services**  
(Total number of staff: 71)



**Tower Bridge**  
(Total number of staff: 59)



**Total number of staff: 408**  
**(March 2010)**