

- The City of London won 'Client' of the Year award and the Smart Cities Control Management System (CMS) Street Lighting Upgrade won the Controls Product of the Year award, at the National LUX Awards



- The Clean Air Award won at the Institute of Couriers Awards 2019, for work on cargo cycle parking in the Square Mile



Total office stock has increased from **9.16** million sq.m gross in March 2019 to **9.30** million sq.m gross in September 2019

Local Flood Risk Management Strategy actions:

- Work on a Riverside Strategy Approach to flood defence raising.
- Production and promotion of flood risk briefing notes and guidance.



The Environment Resilience Team is providing expert input for the emerging Climate Action Strategy



Fibre roll out to City of London housing estates at **70%** and expected to be completed by October **2020**



4 Water refill points installed
3 more to be commissioned Q1 20/21

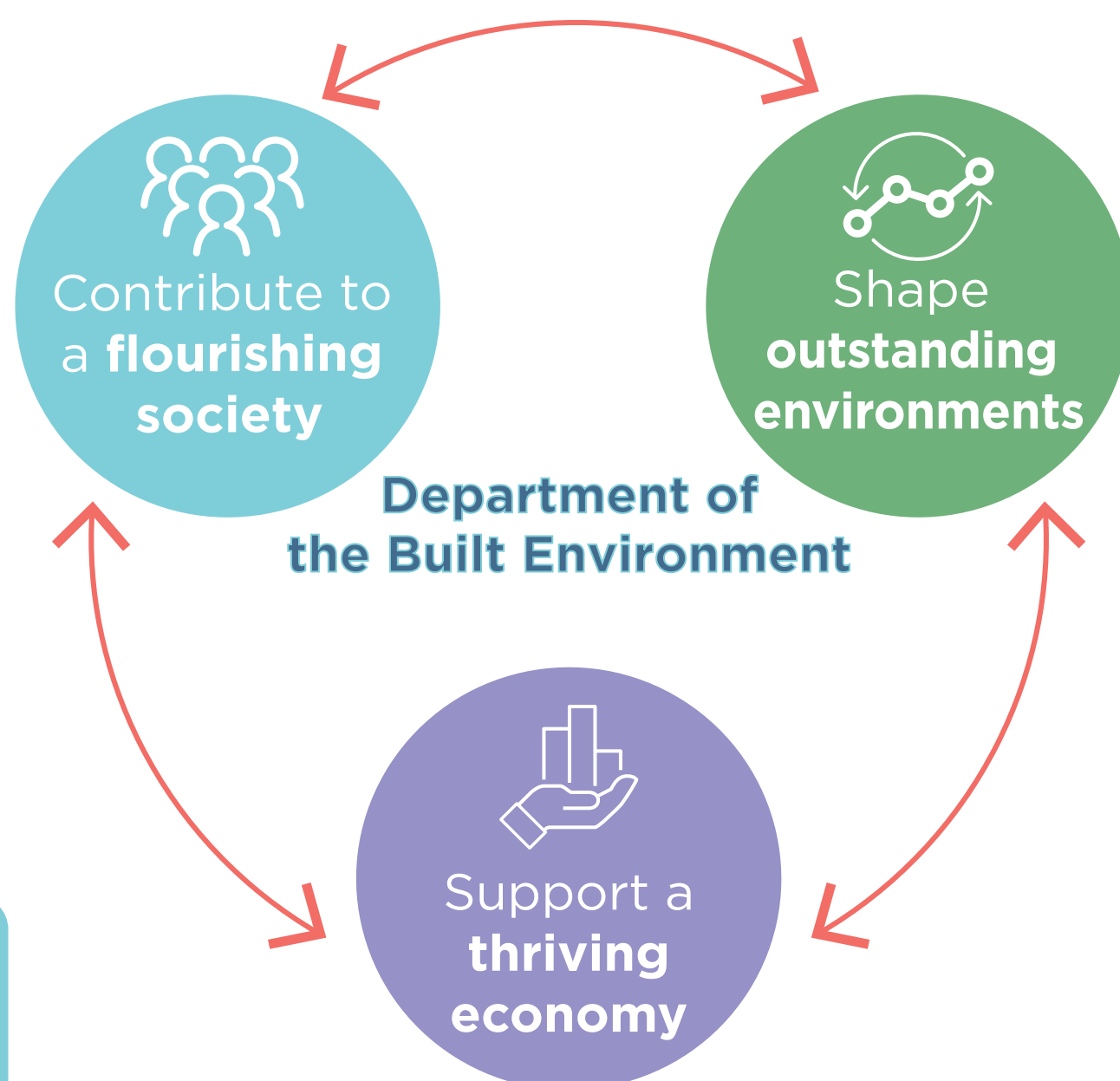


18% energy savings through the introduction of dynamic energy monitoring



Beech St Zero Emission Street trial scheme is on target to go live in **March 2020**

Bank On Safety improvements are underway with the construction of wider footpaths



Planning applications determined within agreed timescales:



75% - Major (Target 100%)
95% - Minor (Target 65%)
92% - Other (Target 75%)

Dynamic lighting level trials at **3** locations to deter anti-social behavior



Transport Strategy Delivery Plan Projects

R	A	G
1	7	32

(Transport Strategy updated Q3)



At the RTPI Awards 2020, our Wind Guidelines have been shortlisted for 3 categories:

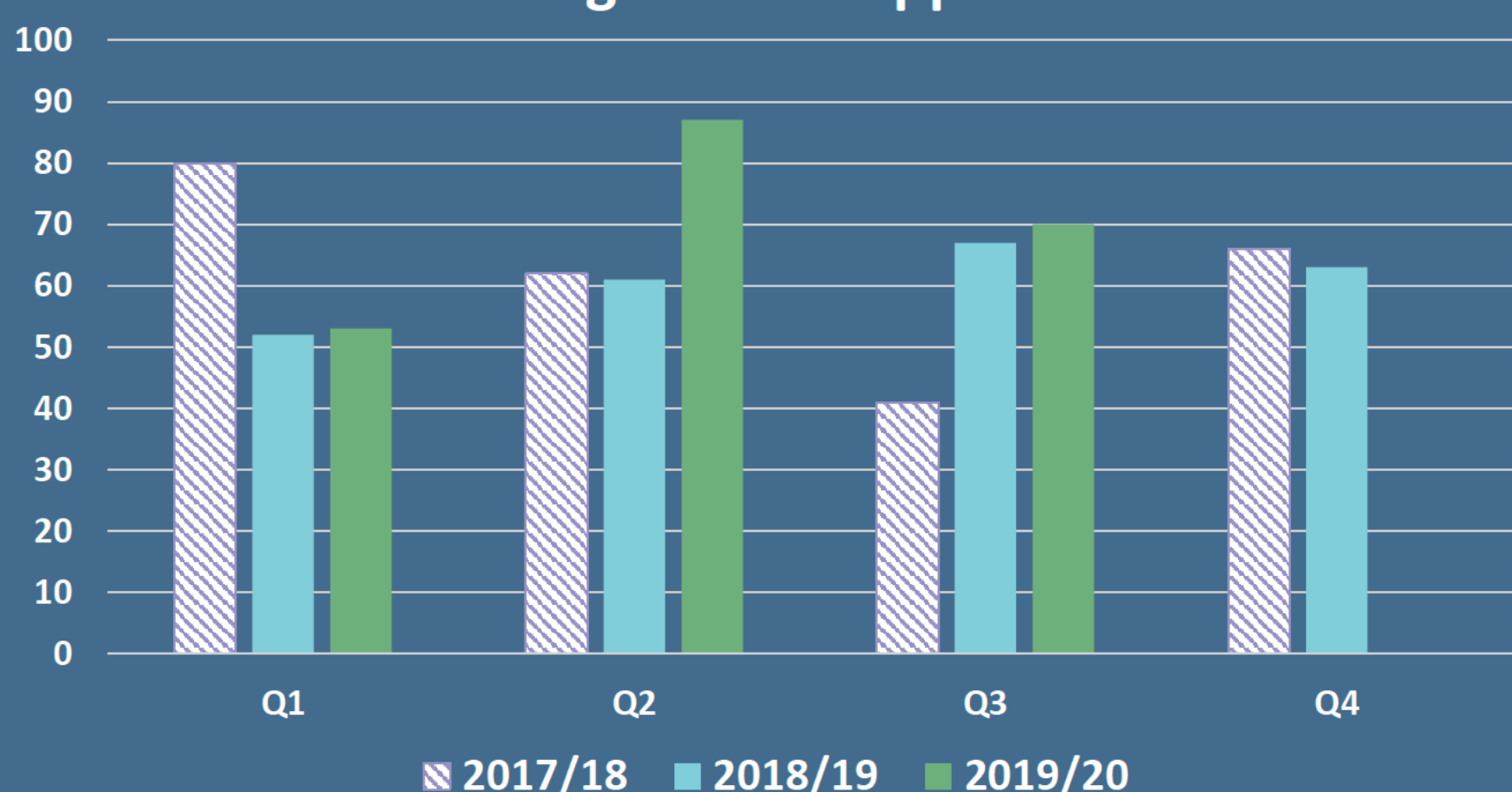
- Excellence in Plan Making Practice
- Excellence in Tech Within Planning Practice
- Excellence in Planning for Health



We have been nominated at the London Transport Awards 2020 for:

- Excellence in Cycling and Walking for the City of London Transport Strategy
- Most Innovative Transport Project for the City of London Wind Microclimate Guidelines
- Contribution to Sustainable Transport for the City of London Zero Emission Fleet

Building Control Applications



Valid Planning Applications

