**EXISTING LAYOUT**

SAVERNAKE BRIDGE ENTRANCE

HAMPSTEAD HEATH

DC274/01 - 20th October 2017

Revision A, 20th November 2020 [Plan redrawn & Title Change]

DCLA Dominic Cole Landscape Architects

studio@dominiccole.net / 0207 700 7510 / 42 Brecknock Road, London N7 0DD

© Dominic Cole Landscape Architects Ltd.

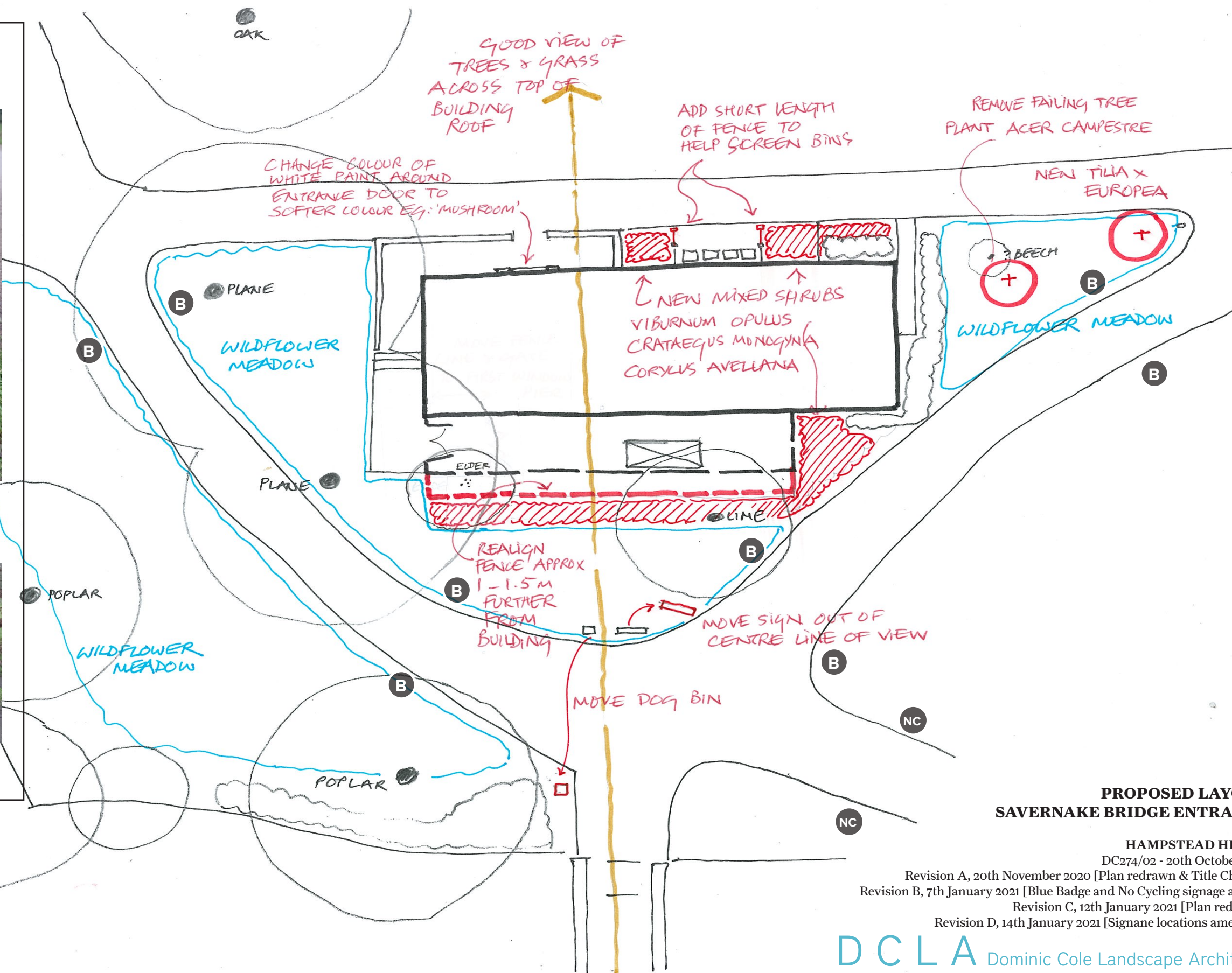
SIGNAGE KEY



B BLUE BADGE SIGN



NC YELLOW NO CYCLING SIGN



PROPOSED LAYOUT SAVERNAKE BRIDGE ENTRANCE

HAMPSTEAD HEATH

DC274/02 - 20th October 2017

Revision A, 20th November 2020 [Plan redrawn & Title Change]

Revision B, 7th January 2021 [Blue Badge and No Cycling signage added]

Revision C, 12th January 2021 [Plan redrawn]

Revision D, 14th January 2021 [Signage locations amended]

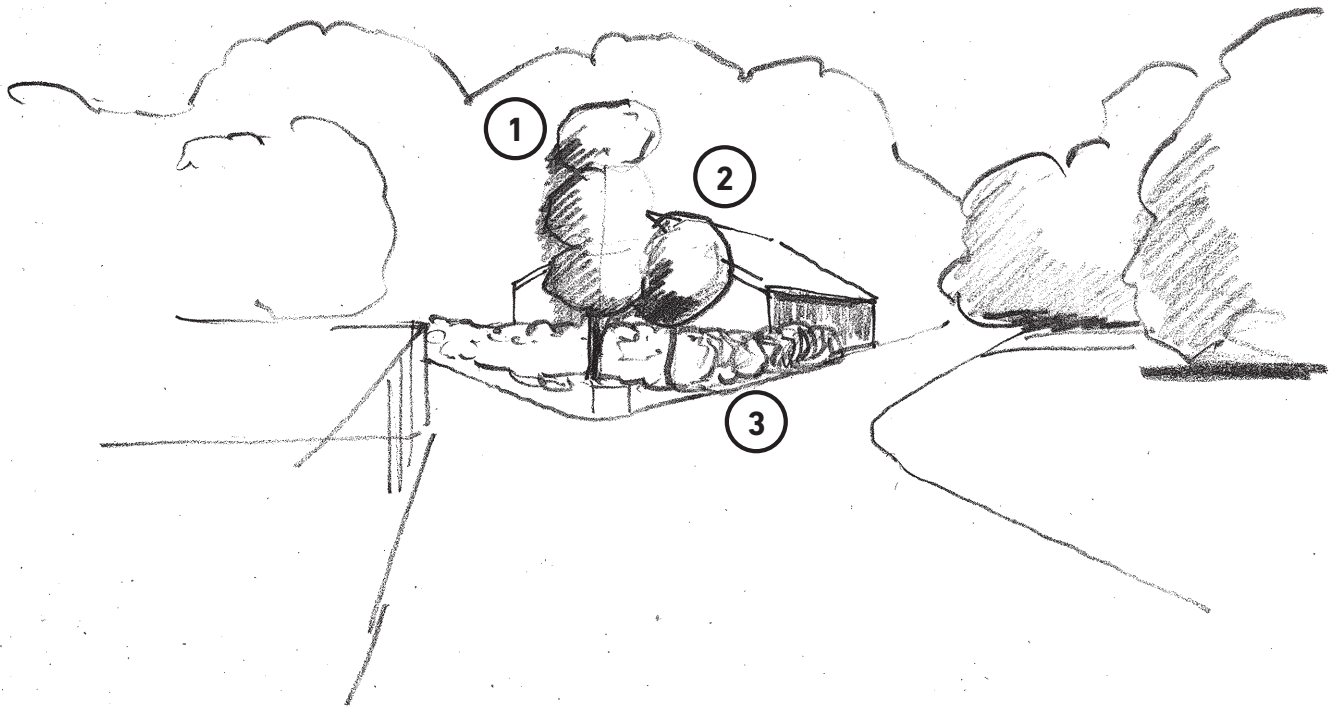
DCLA Dominic Cole Landscape Architects

studio@dominiccole.net / 0207 700 7510 / 42 Brecknock Road, London N7 0DD

© Dominic Cole Landscape Architects Ltd.



Prominent gate end



- ① New Lime - *Tilia x europea*
- ② New Field Maple - *Acer campestre*
- ③ New planting between building and path

PROPOSED PLANTING BESIDE THE HIVE BUILDINGS

HAMPSTEAD HEATH

DC274/03 - 20th October 2017

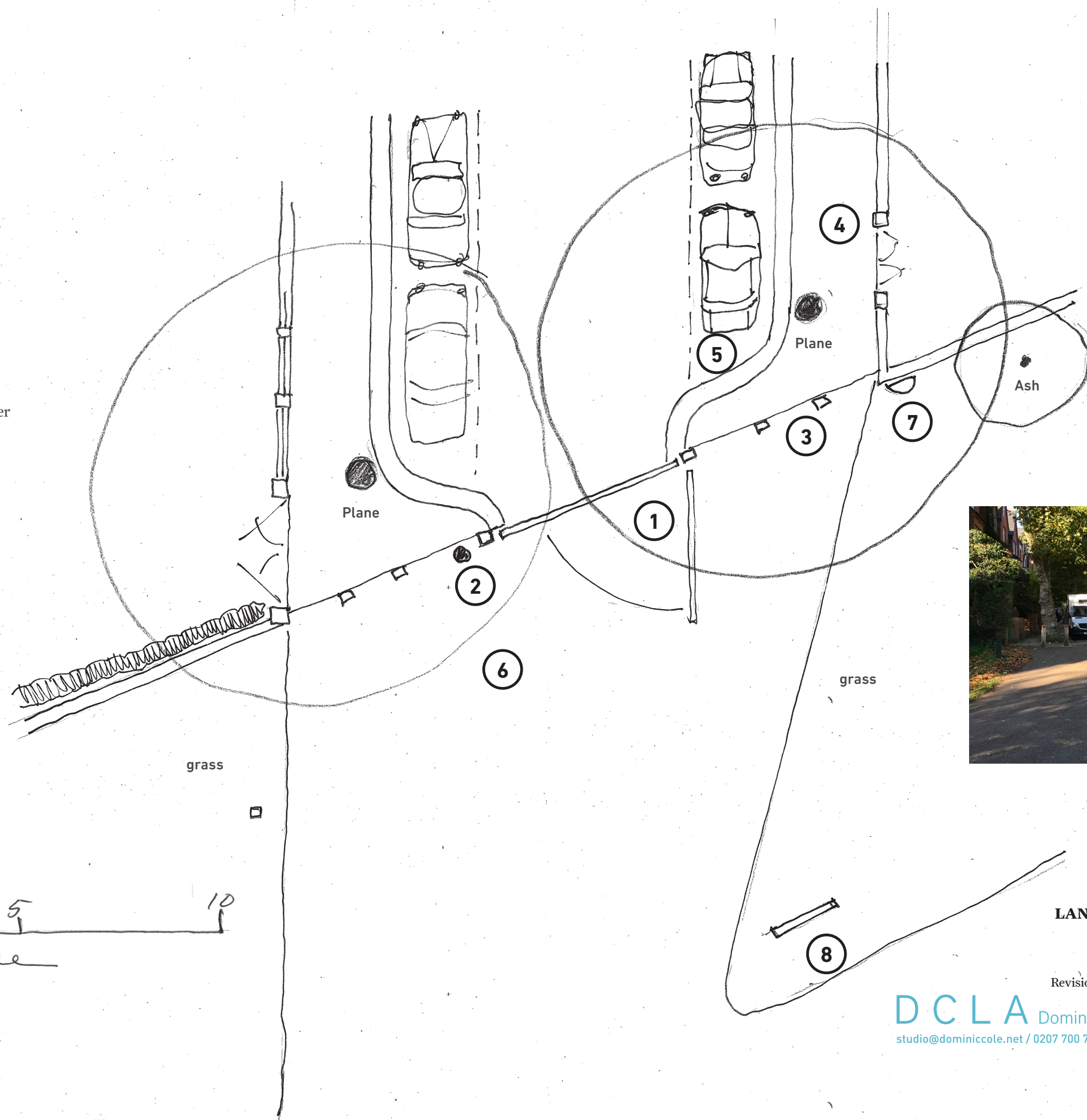
Revision A, 20th November 2020 [Title Change]

Revision B, 7th January 2021 [Note Changes]

DCLA Dominic Cole Landscape Architects
studio@dominiccole.net / 0207 700 7510 / 42 Brecknock Road, London N7 0DD

© Dominic Cole Landscape Architects Ltd.

- ① Metal pole gate
- ② Lamp post
- ③ Timber bollards
- ④ Stone paving
- ⑤ Granite kerb
- ⑥ Tarmac
- ⑦ Metal boundary marker
- ⑧ C.O.L. sign



0 1 2 3 4 5 10
 Approx scale

LANDSCAPE LAYOUT EXISTING

NASSINGTON ROAD
 HAMPSTEAD HEATH

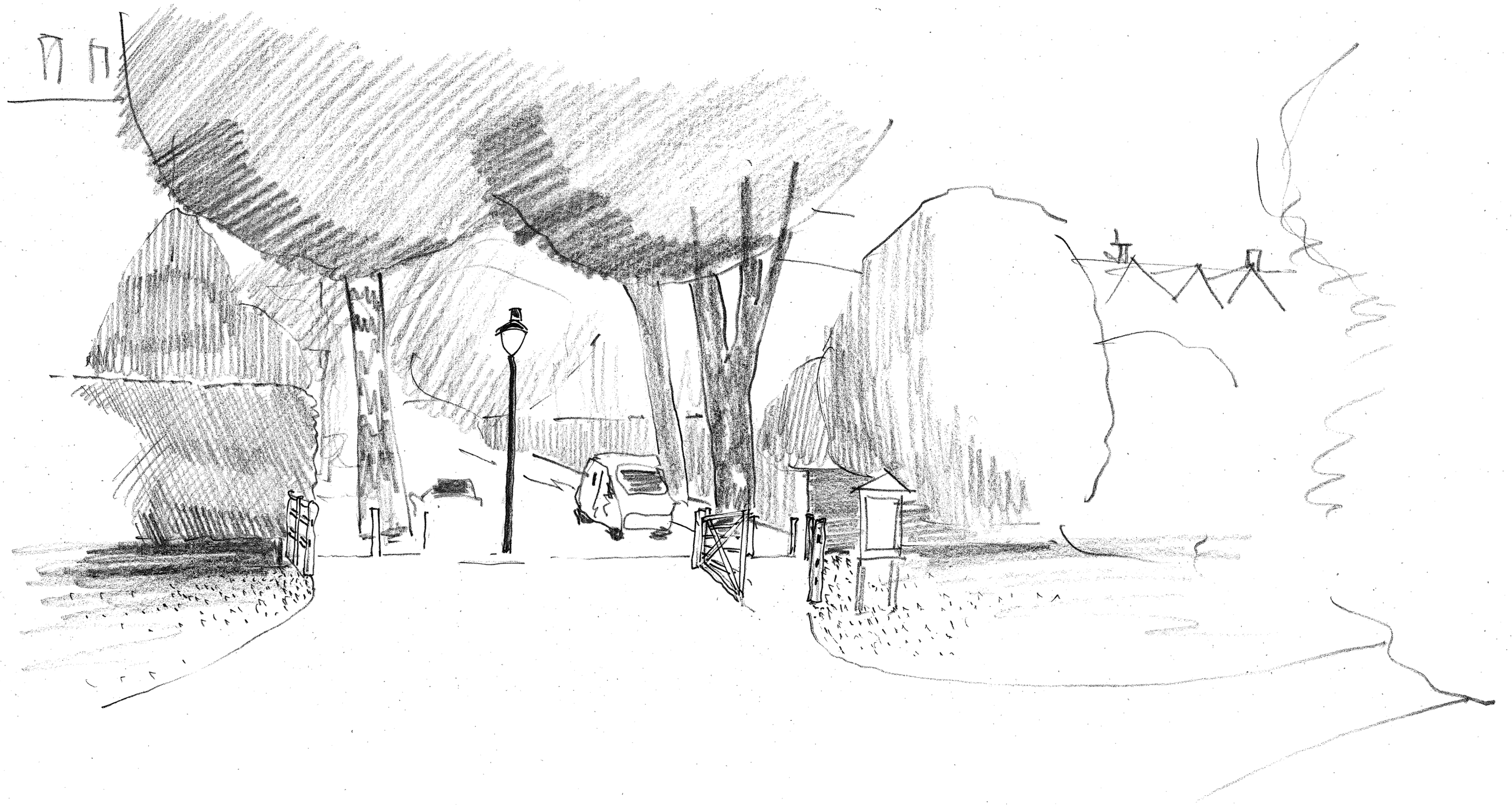
DC274/04 - 20th October 2017
 Revision A, 19th November 2020 [Title Change]

DCLA Dominic Cole Landscape Architects
 studio@dominiccole.net / 0207 700 7510 / 42 Brecknock Road, London N7 0DD

© Dominic Cole Landscape Architects Ltd.

-
- The sketch map illustrates a proposed road layout for Nassington Road. The road is shown as a vertical line on the left, with a horizontal road crossing it. A diagonal road branches off to the right. Numbered points are marked along the roads: Point 1 is on the diagonal road near the bottom; Point 2 is on the vertical road near the bottom; Point 3 is on the horizontal road near the center; Point 4 is on the diagonal road near the top. A scale bar at the bottom left indicates distances of 0, 5, and 10 units. A legend at the top left identifies symbols for 'st and rail' (a line with cross-ticks), 'post' (a small circle), and 'bollards' (small squares). The road is labeled 'NASSINGTON ROAD' at the top center. The map also shows a car parked on the horizontal road and a building on the right side.

© Dominic Cole Landscape Architects Ltd.



PROPOSED TIMBER RAILS & GATE

**NASSINGTON ROAD
HAMPSTEAD HEATH**

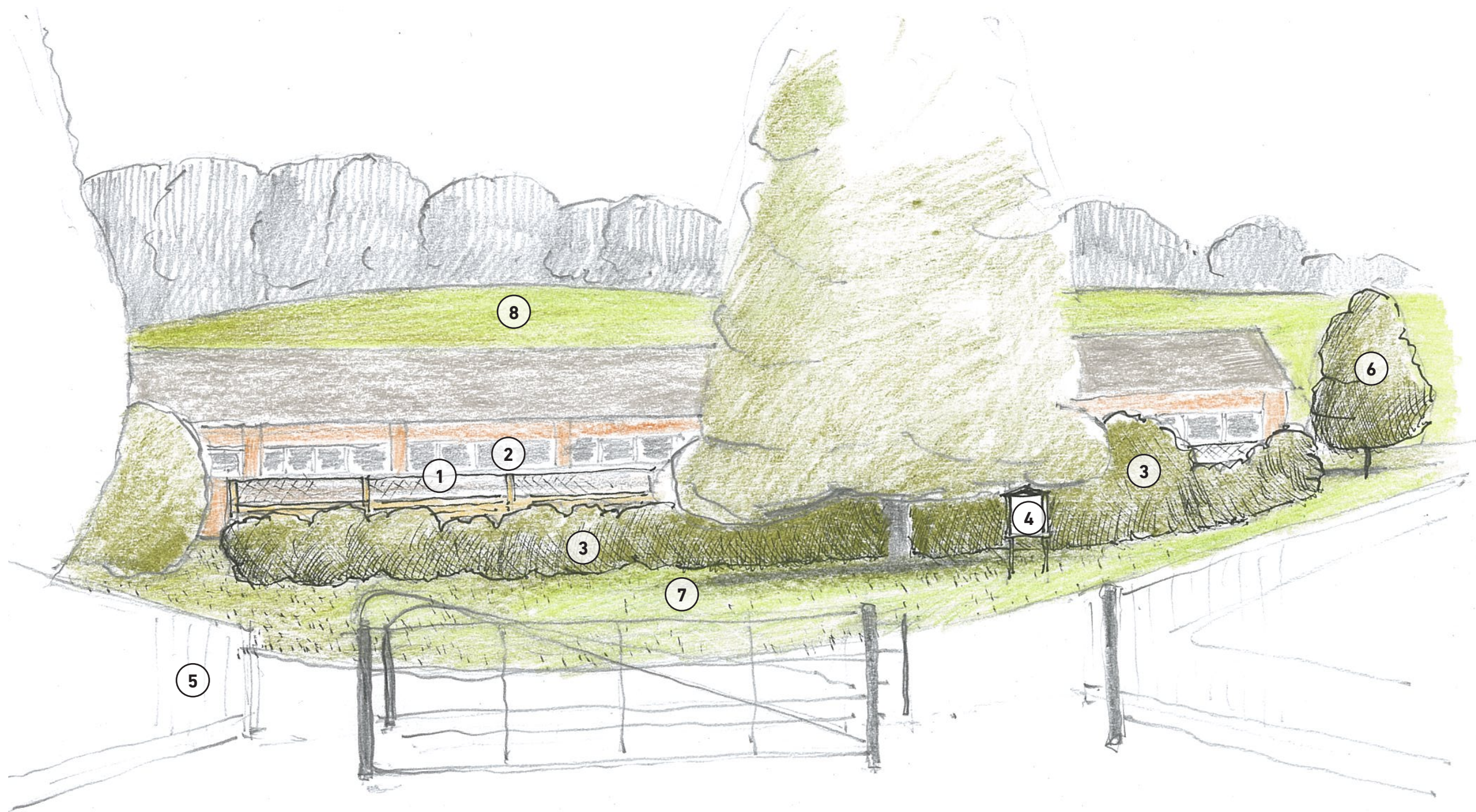
DC274/06 - 20th October 2017

Revision A, 20th November 2020 [Title Change]

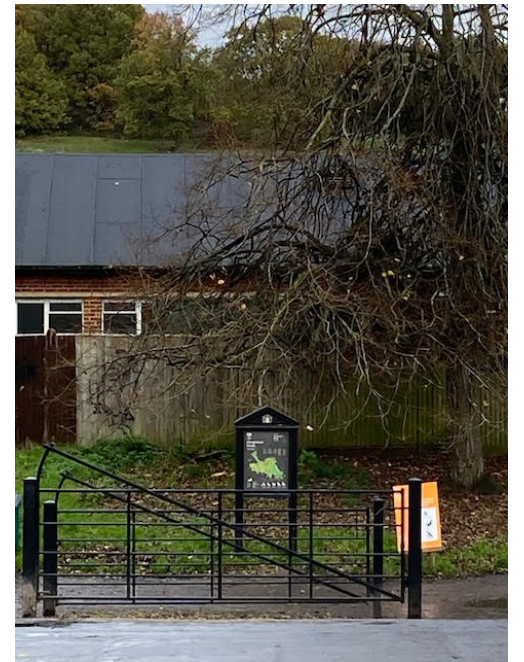
Revision B, 7th January 2021 [Gate Removed]

DCLA Dominic Cole Landscape Architects
studio@dominiccole.net / 0207 700 7510 / 42 Brecknock Road, London N7 0DD

© Dominic Cole Landscape Architects Ltd.



1. Replace fence on new alignment with horizontal feather boards. Top to be mesh or lattice 300mm high.
2. Change white paint to mushroom
3. New 'hedge'
4. Re-locate sign away from centre of view
5. Relocate dog bin
6. New Field Maple
7. New wildflower meadow
8. View across top of roof



SAVERNAKE BRIDGE ENTRANCE PROPOSALS

HAMPSTEAD HEATH

DC274/07 - 20th October 2017

Revision A, 20th November 2020

DCLA Dominic Cole Landscape Architects
studio@dominiccole.net / 0207 700 7510 / 42 Brecknock Road, London N7 0DD

© Dominic Cole Landscape Architects Ltd.



Hive Building - Change white paint on all windows and main door surround to mushroom.



Bin Area - Extend fences up to path edge. Remove paving either side and add planting.



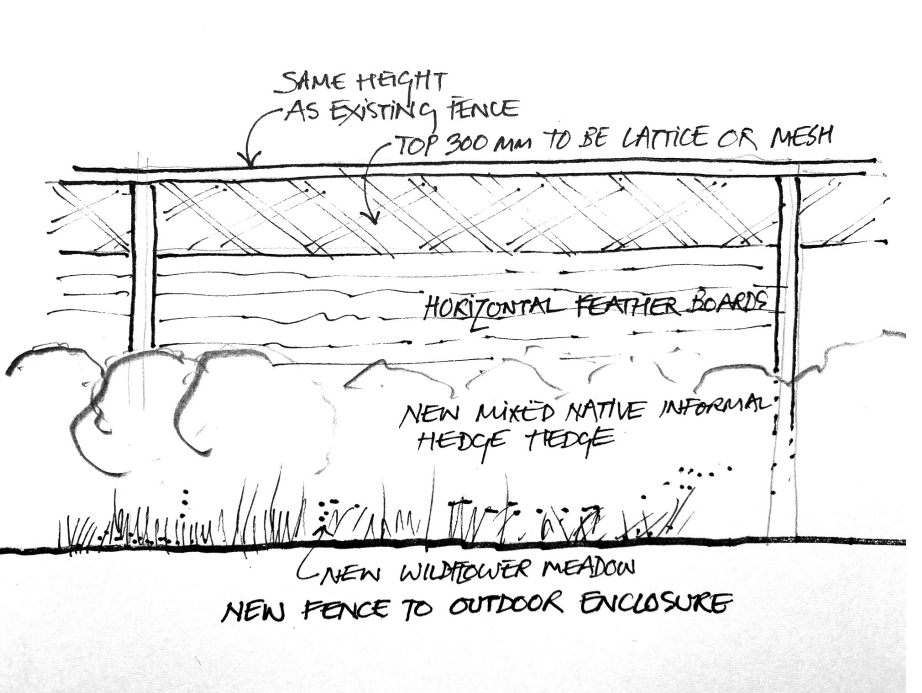
Realign external enclosure fence and move approx 2m further from building. Change fence to horizontal featherboards with top 300mm as mesh or lattice pattern.



Existing grass to become wildflower meadow.



For Nassington Road entrance use similar style timber fencing as for Gordon House Road.



**SAVERNAKE BRIDGE & NASSINGTON ROAD
ENTRANCES TO HAMPSTEAD HEATH**

HAMPSTEAD HEATH
DC274/08 - 20th November 2020

DCLA Dominic Cole Landscape Architects
studio@dominiccole.net / 0207 700 7510 / 42 Brecknock Road, London N7 0DD

© Dominic Cole Landscape Architects Ltd.