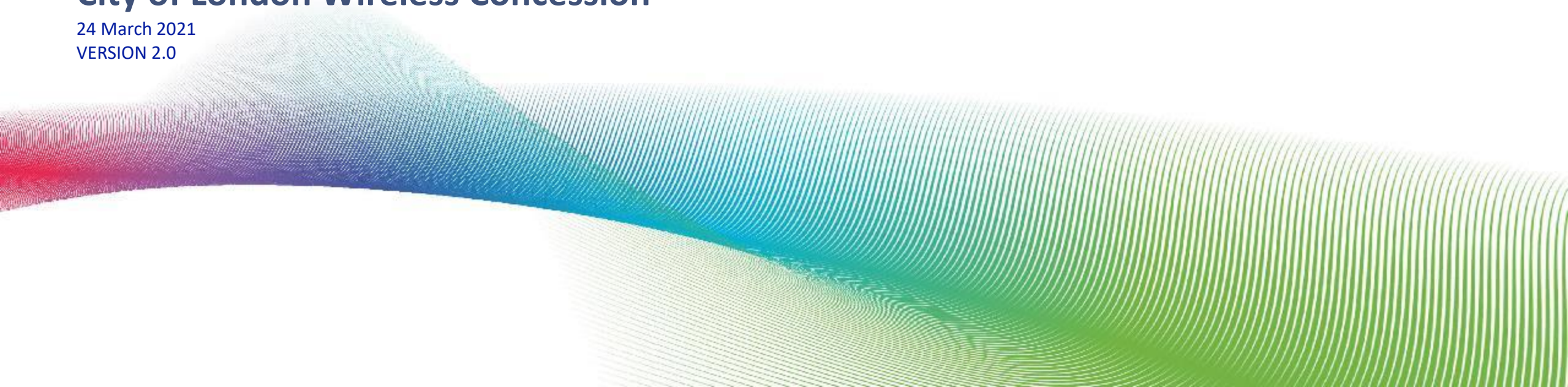


Using Standard Street Lighting Poles for Deploying Small Cells

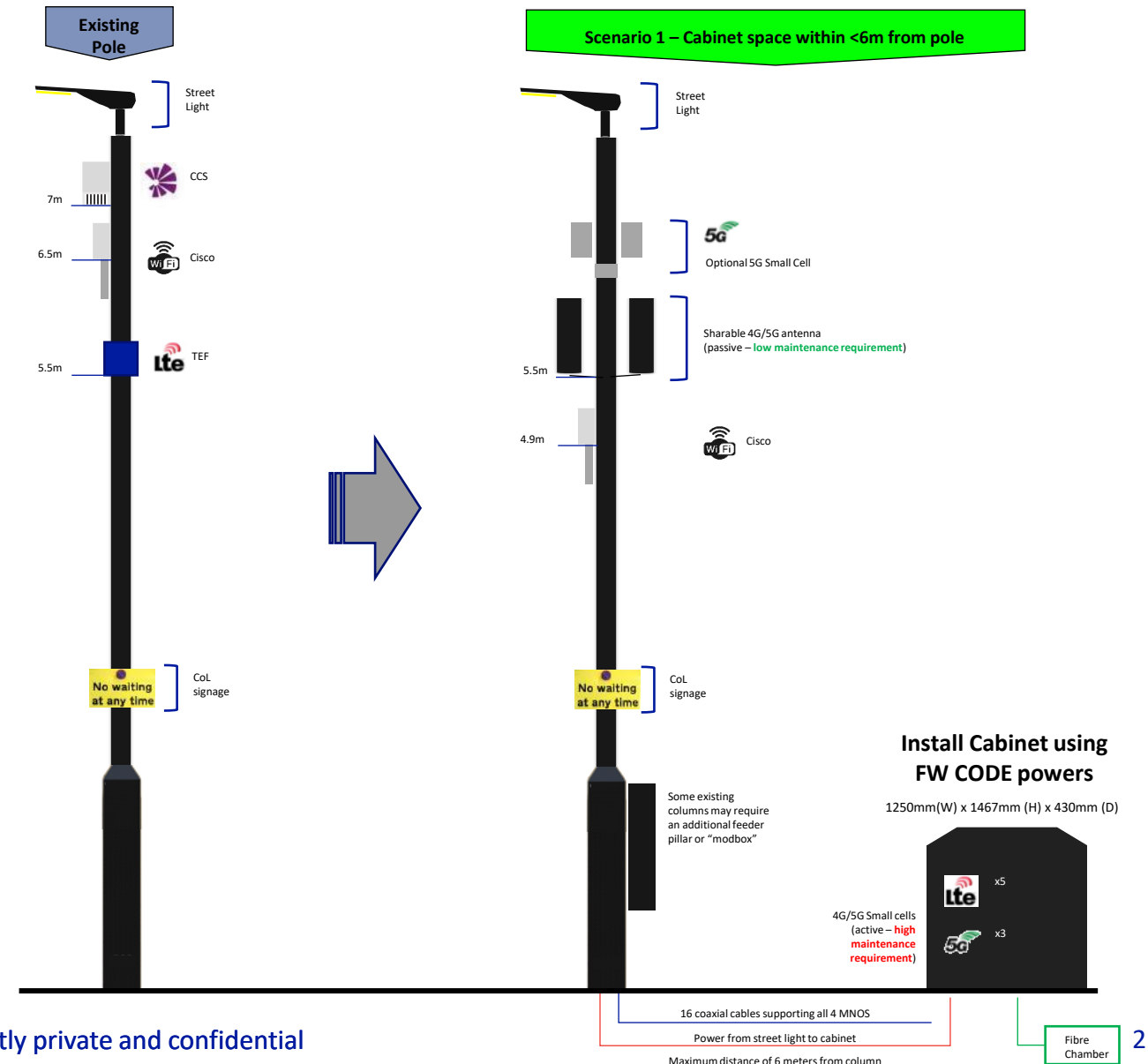
City of London Wireless Concession

24 March 2021
VERSION 2.0

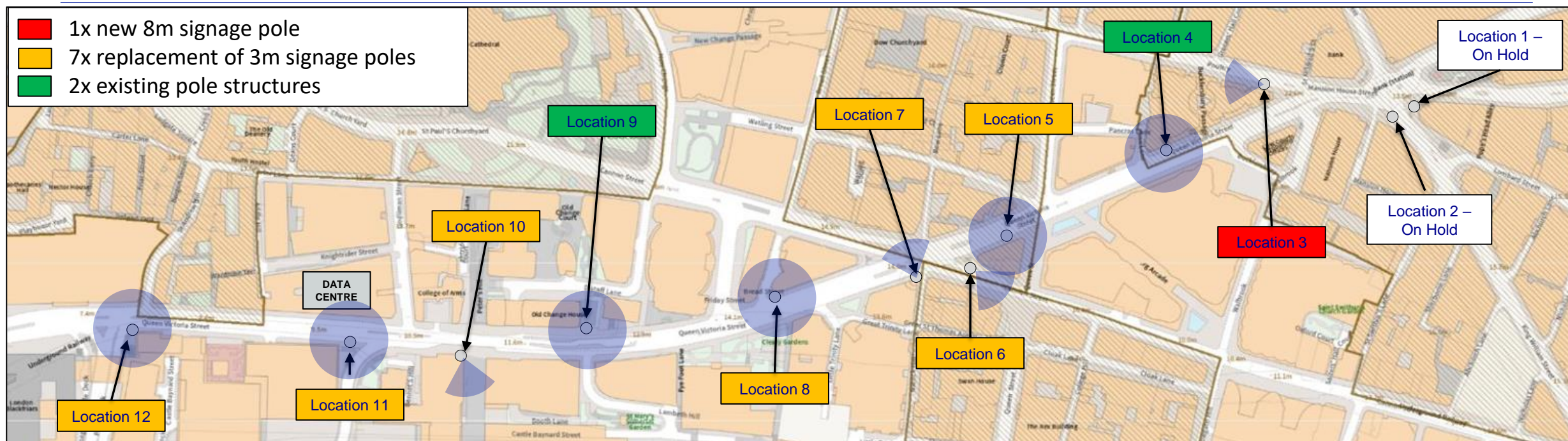


City of London Small Cell Proposal Using Standard Street Lighting Columns

- Where possible use existing TEF/Cornerstone site
- Retain existing WiFi on pole
- Install two antennas (Dimensions – circa 400mm height and 200 diameter)
- Installation of a cabinet of dimensions (1467mm x 1250mm x 430mm) within 6 meters from pole location using Freshwave's CODE powers
- At least one MNO has indicated that it may prefer to install the 5G unit up on the pole
- Flexibility to install a feeder pillar or a "Mod box" (200mm x 120mm x 600mm) to the base of existing selected columns in order to make space for coaxial cabling

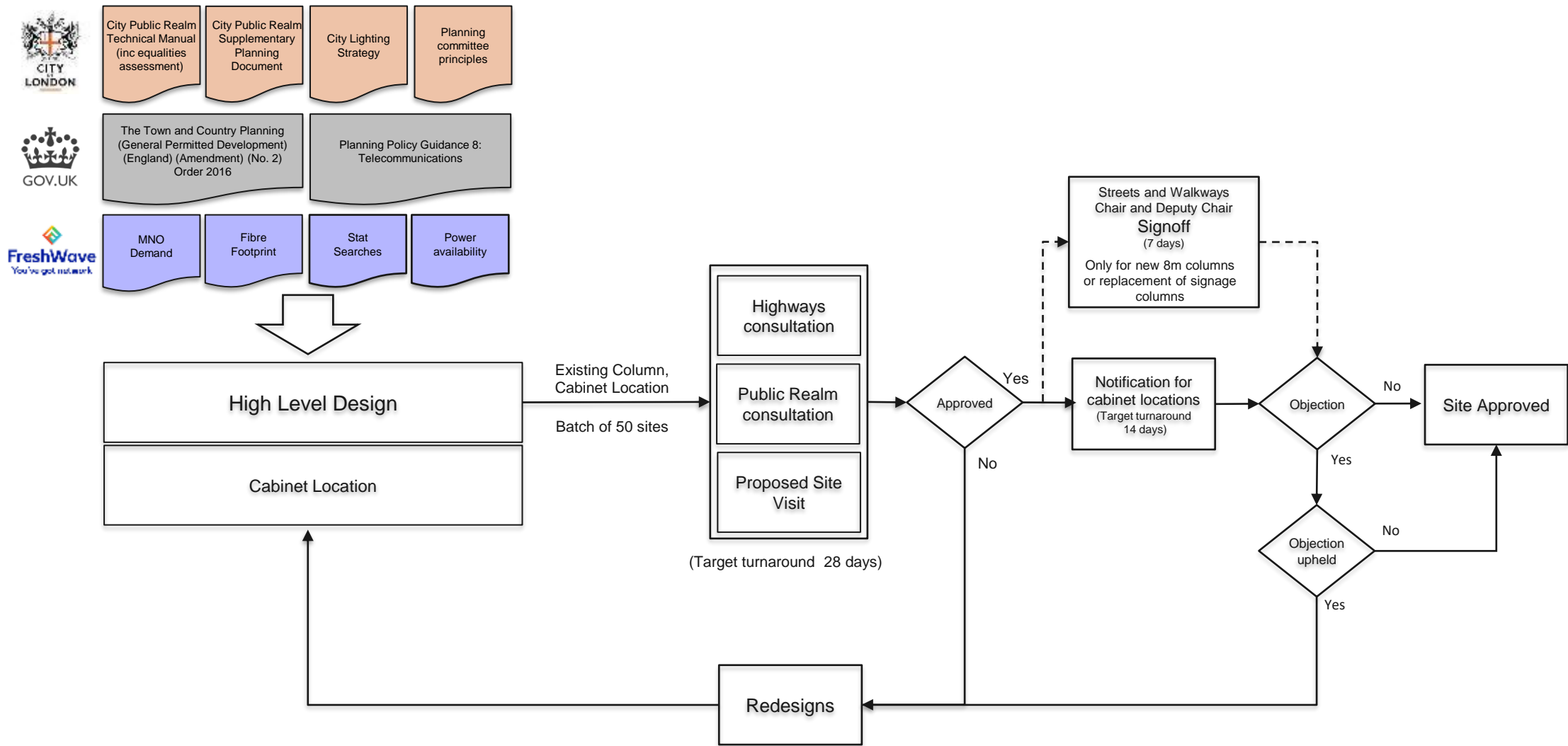


Trial Infrastructure Summary

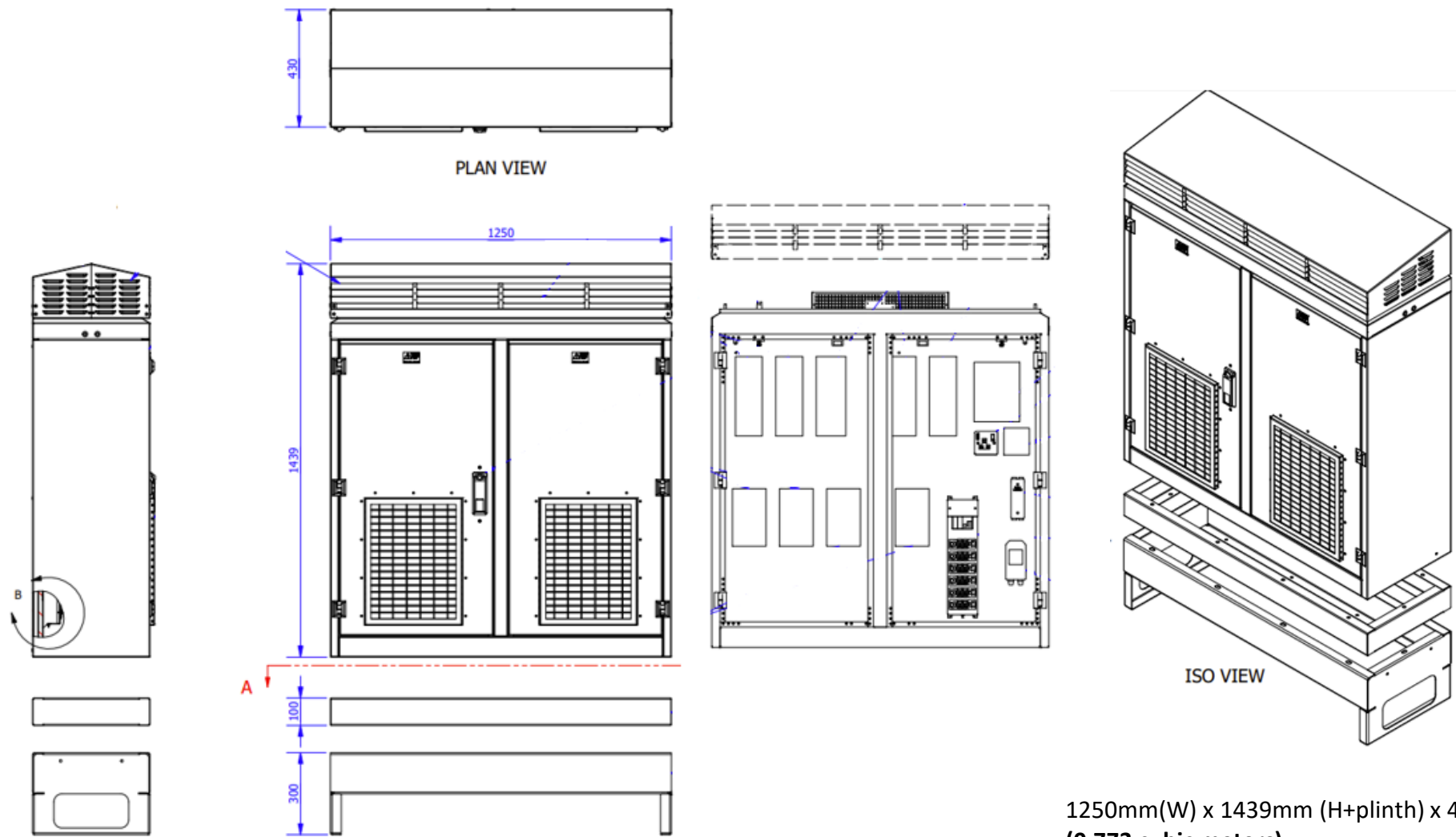


Site	Existing Structure	New Structure	Cabinet location	Conservation area	Comments
Location 1	On Hold				
Location 2	On Hold				
Location 3	New 8m Signage Pole with Butt Bin	New 8m signage pole	On footway against wall	Yes	Agreed by Public Realm and Highways
Location 4	Existing Wireless Pole	N/A	On footway against wall	Yes	Agreed by Public Realm and Highways
Location 5	Existing Signage Pole	Replace 3m signage pole with a 8m signage pole	On footway against wall	Yes	Agreed by Public Realm and Highways
Location 6	Existing Signage Pole	Replace 3m signage pole with a 8m signage pole	On footway against wall	Yes	Agreed by Public Realm and Highways
Location 7	Existing Signage Pole	Replace 3m signage pole with a 8m signage pole	On footway against wall	No	Agreed by Public Realm and Highways
Location 8	Existing Signage Pole	Replace 3m signage pole with a 8m signage pole	On footway against wall	No	Agreed by Public Realm and Highways
Location 9	Move existing lighting Pole	Move existing lighting pole to nearby location	On footway against wall	No	Agreed by Public Realm and Highways
Location 10	Existing Wireless Pole	Replace 6m wireless pole with a 8m pole	On footway against wall	No	Agreed by Public Realm and Highways
Location 11	Existing Lighting Pole	N/A	On footway against wall	No	Agreed by Public Realm and Highways
Location 12	Existing Signage Pole	Replace 3m signage pole with a 8m signage pole	Beside stairwell leading to subway	No	Agreed by Public Realm and Highways

Design Requirements

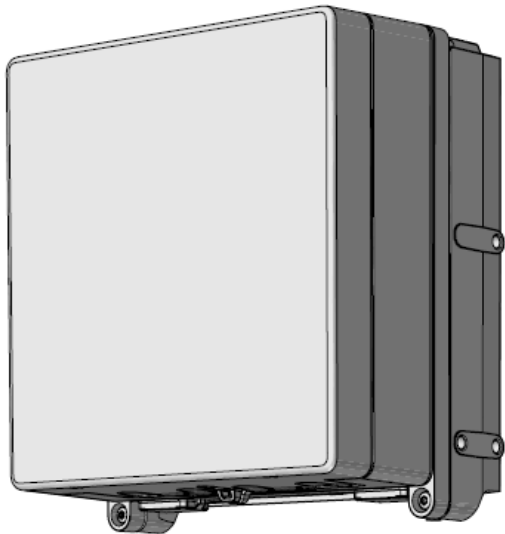
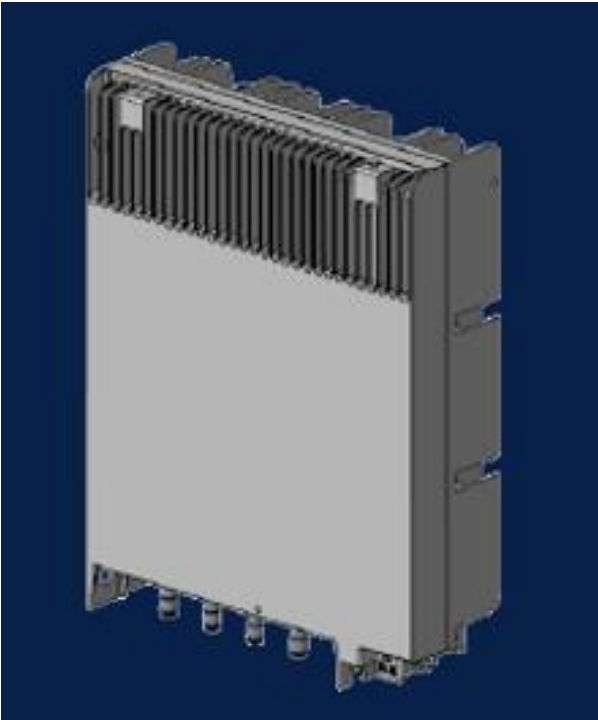


Proposed Cabinet



1250mm(W) x 1439mm (H+plinth) x 430mm (D)
(0.773 cubic meters)

Dimensions of 5G Units, to be finished black

		
Width (mm)	200	245
Depth (mm)	125	110
Height (mm)	213.5	295
Weight (Kg)	6	12.5

Pilot Location 3 (install new 8m signage column)

Existing View





Proposed View



Pilot Location 3

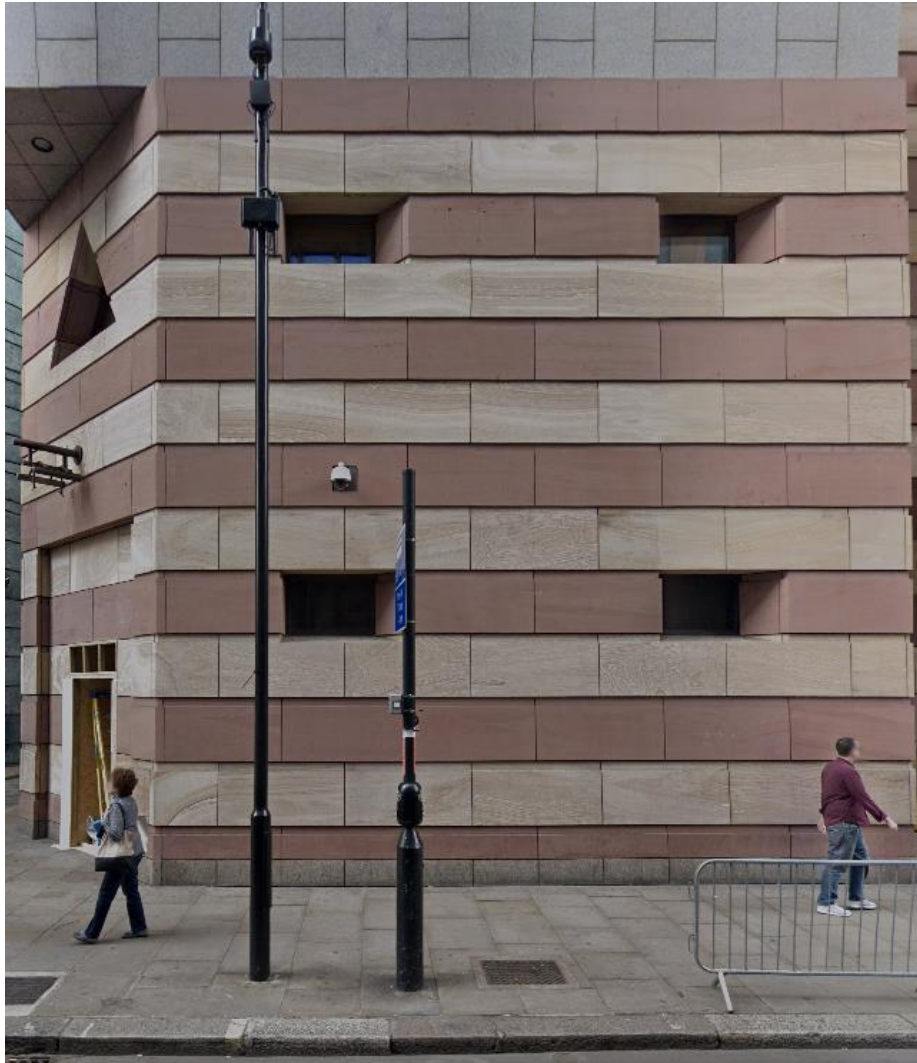


-  New Cabinet Location
-  Proposed Column Location

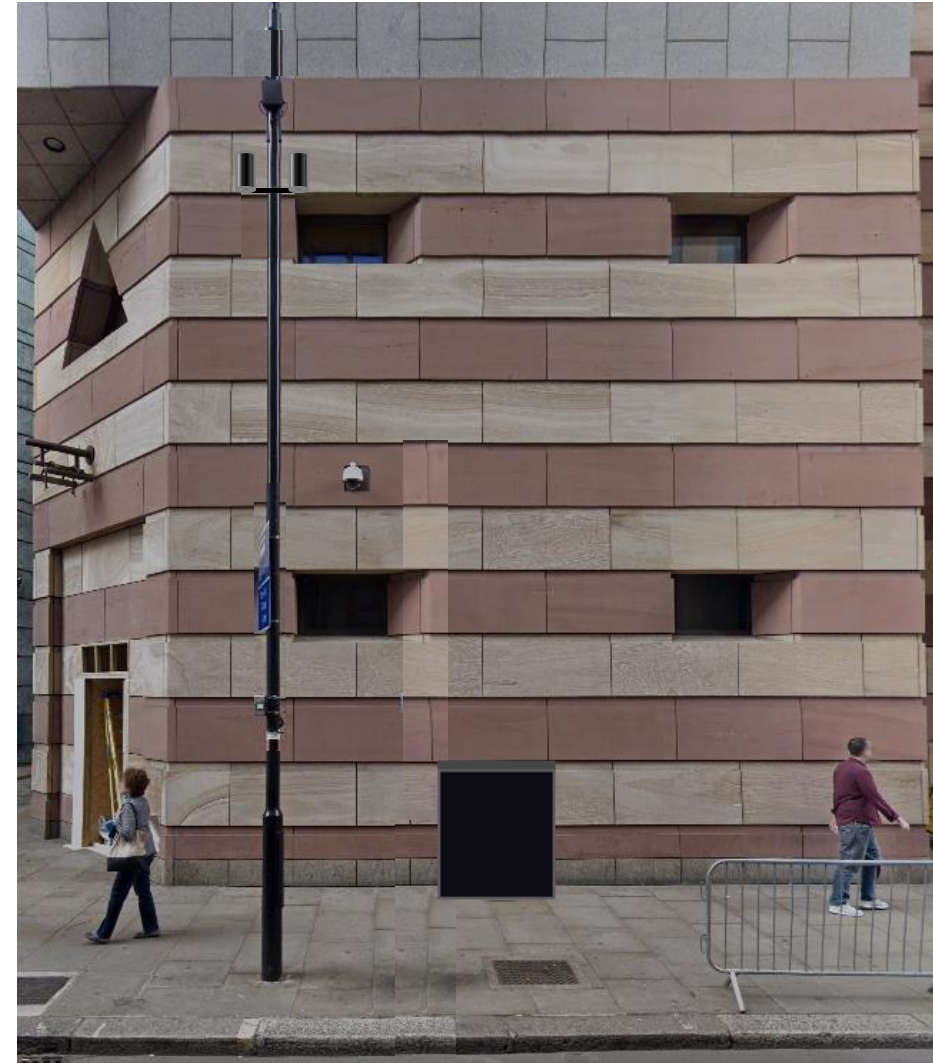
Item	Distance (m)
Distance From Column to cabinet	4.04
Distance from Cabinet to BT Chamber	3.45
Distance from column to other columns (scenario 2)	N/A
Minimum Clearance	3.47

Pilot Location 4 - BG9 (utilising existing 8m column)

Existing View





Proposed View



Pilot Location 4 - BG9



-  New Cabinet Location
-  Proposed Column Location

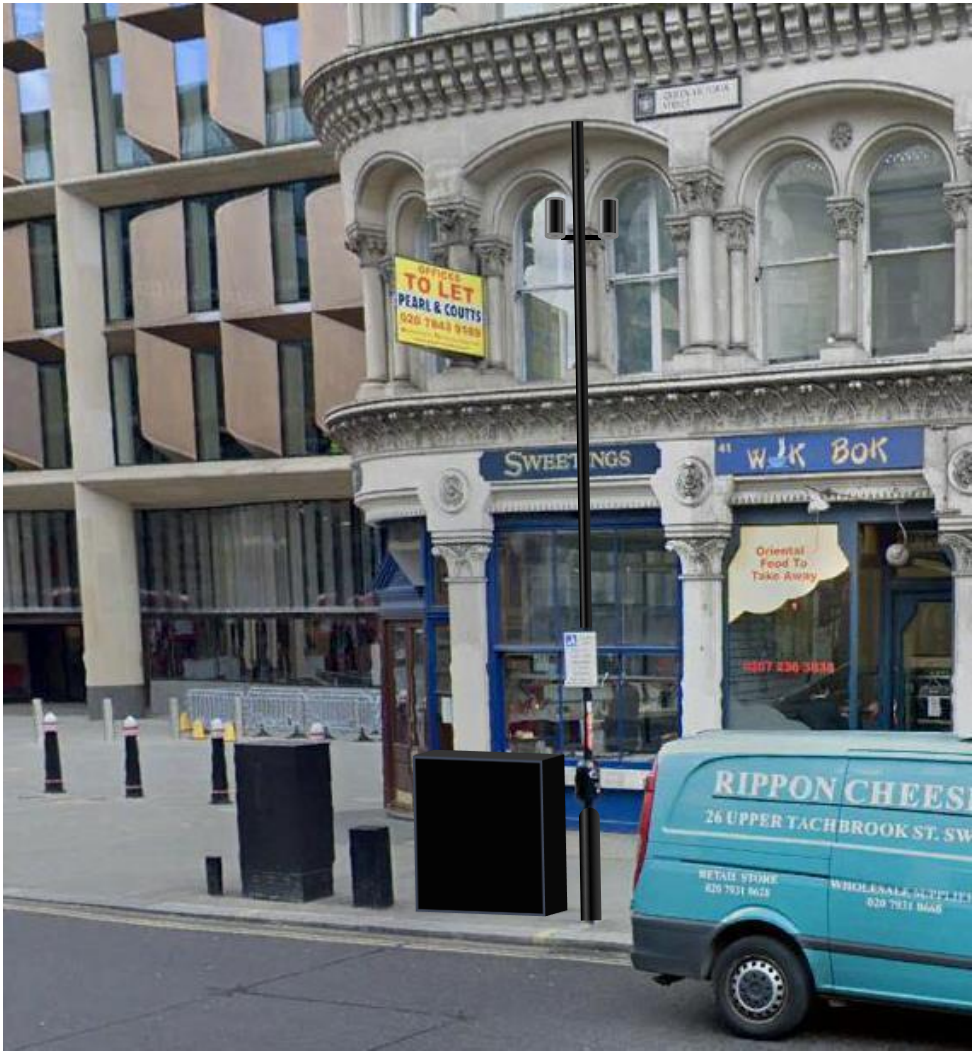
Item	Distance (m)
Distance From Column to cabinet	2.95
Distance from Cabinet to BT Chamber	18.22
Distance from column to other columns (scenario 2)	N/A
Minimum Clearance	2.95

Pilot Location 5 - 442/EL20 (Replace existing 3m signage column with 8m column)

Existing View





Proposed View



Pilot Location 5 - 442/EL20



-  New Cabinet Location
-  Proposed Column Location

Item	Distance (m)
Distance From Column to cabinet	<1
Distance from Cabinet to BT Chamber	9.43
Distance from column to other columns (scenario 2)	N/A
Minimum Clearance	N/A
Notes	May require 75x75mm trunking at low level from cabinet

Pilot Location 6 (Replace existing 3m signage column with 8m column)

Existing View



Proposed View



Pilot Location 6



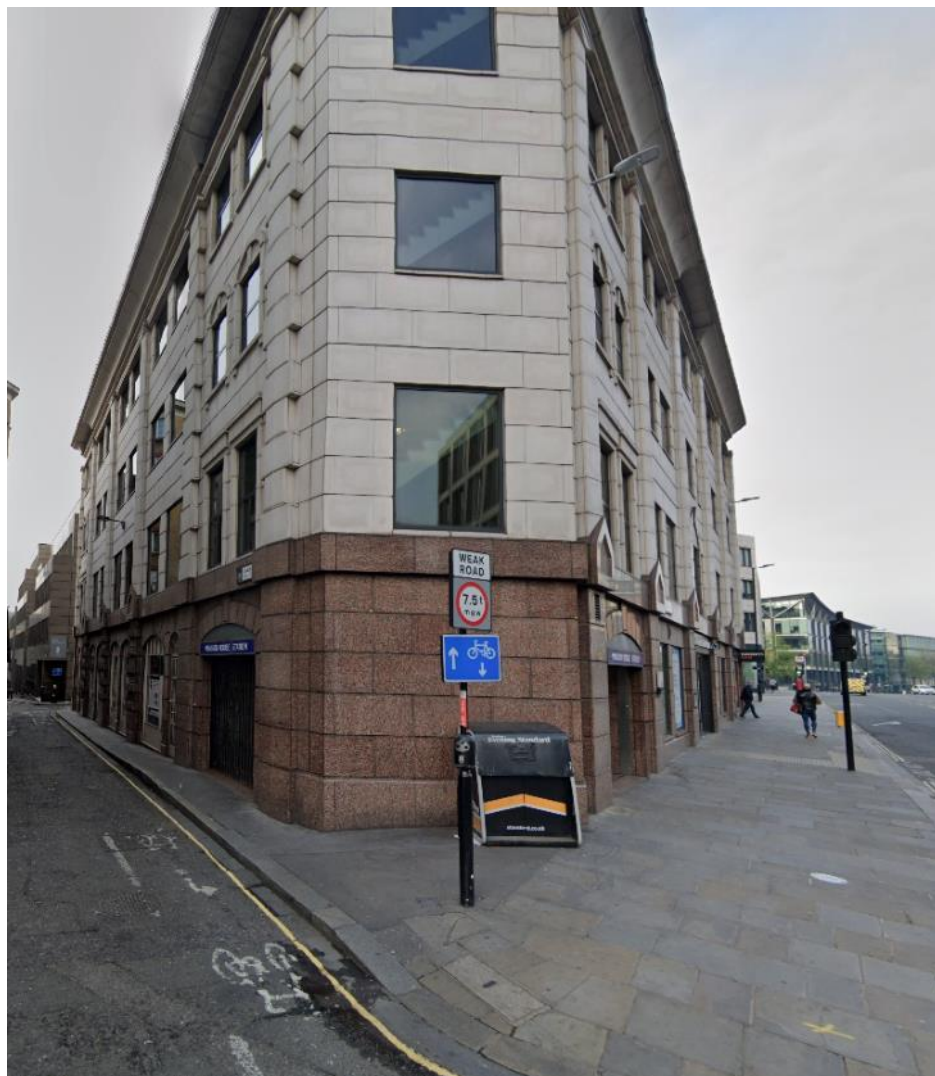
 New Cabinet Location

 Proposed Column Location

Item	Distance (m)
Distance From Column to cabinet	4.01
Distance from Cabinet to BT Chamber	8.63
Distance from column to other columns (scenario 2)	N/A
Minimum Clearance	N/A

Pilot Location 7 (Replace existing 3m signage column with 8m column)

Existing View





24 March 2021

Proposed View



Strictly private and confidential



-  New Cabinet Location
-  Proposed Column Location

Item	Distance (m)
Distance From Column to cabinet	1.22
Distance from Cabinet to BT Chamber	6.67
Distance from column to other columns (scenario 2)	N/A
Minimum Clearance	2.00

Pilot Location 8 (Replace existing 3m signage column with 8m column)

Existing View





Proposed View



Pilot Location 8



-  New Cabinet Location
-  Proposed Column Location

Item	Distance(m)
Distance From Column to cabinet	1.64
Distance from Cabinet to BT Chamber	9.22
Distance from column to other columns (scenario 2)	N/A
Minimum Clearance	N/A

Pilot Location 9 – 442/EL46 (Move existing lighting column)

Existing View





Proposed View



Pilot Location 9 – 442/EL46



-  New Cabinet Location
-  Proposed Column Location



Item	Distance(m)
Distance From Column to cabinet	2.7
Distance from Cabinet to BT Chamber	11.64
Distance from column to other columns (scenario 2)	N/A
Minimum Clearance	4.52

Pilot Location 10 – E8N16 (Replace existing 6m column with 8m column)



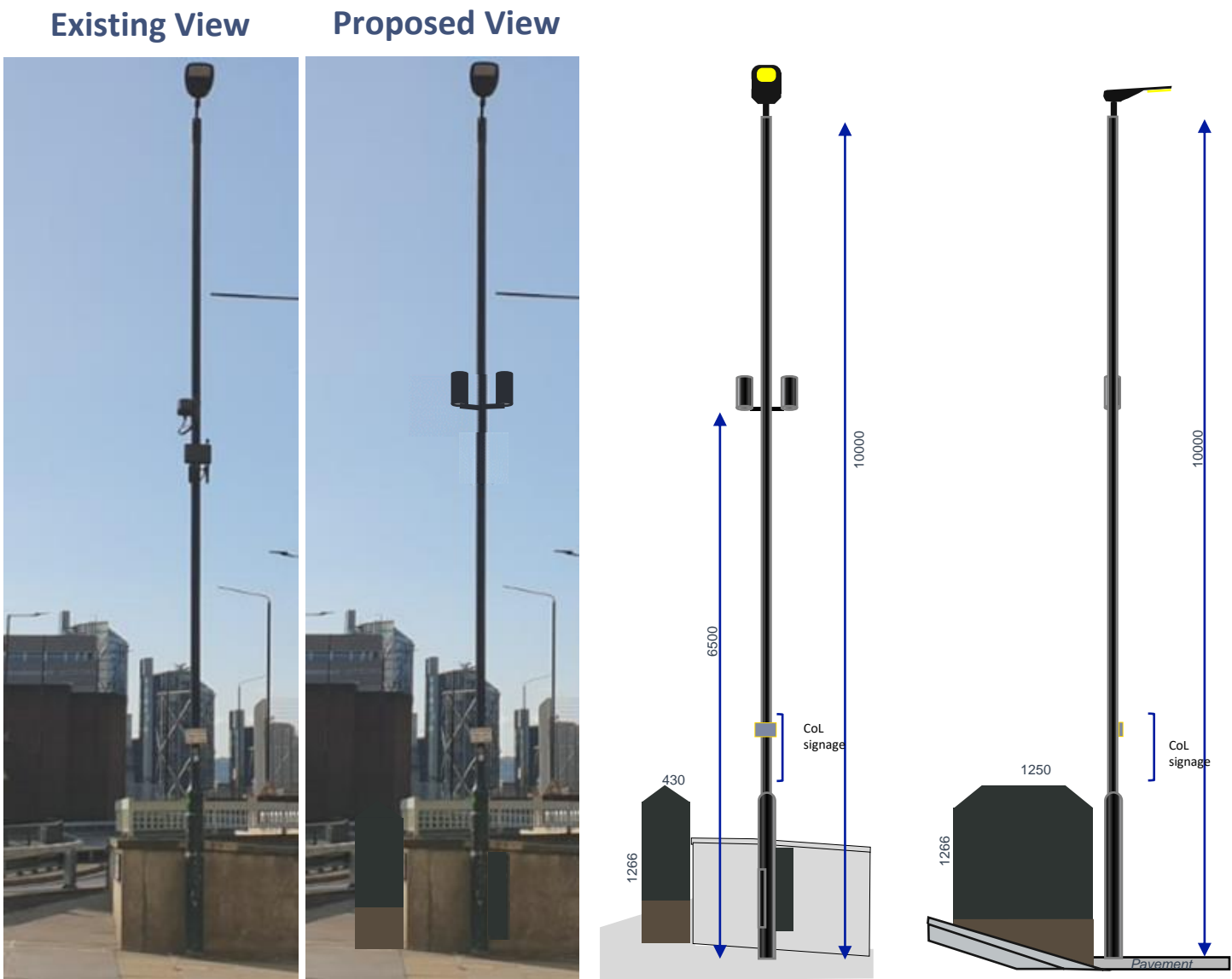
Pilot Location 10 – E8N16



-  New Cabinet Location
-  Proposed Column Location



Item	Distance(m)
Distance From Column to cabinet	<1
Distance from Cabinet to BT Chamber	11.40
Distance from column to other columns (scenario 2)	N/A
Minimum Clearance	5.15

Pilot Location 11 – 442/EL62 (Use existing 10m column)



Pilot Location 11 – 442/EL62



-  New Cabinet Location
-  Proposed Column Location

Item	Distance(m)
Distance From Column to cabinet	2.20
Distance from Cabinet to BT Chamber	22.29
Distance from column to other columns (scenario 2)	N/A
Minimum Clearance	2.57

Pilot Location 12 (Replace existing 3m signage column with 8m column)

Existing View



Proposed View





Proposed View (Cabinet)



Pilot Location 12



-  New Cabinet Location
-  Proposed Column Location

Item	Distance(m)
Distance From Column to cabinet	4.5
Distance from Cabinet to BT Chamber	<1
Distance from column to other columns (scenario 2)	N/A
Minimum Clearance	2.8



FreshWave

You've got network

in Freshwave

 @freshwavegroup

freshwavegroup.com