

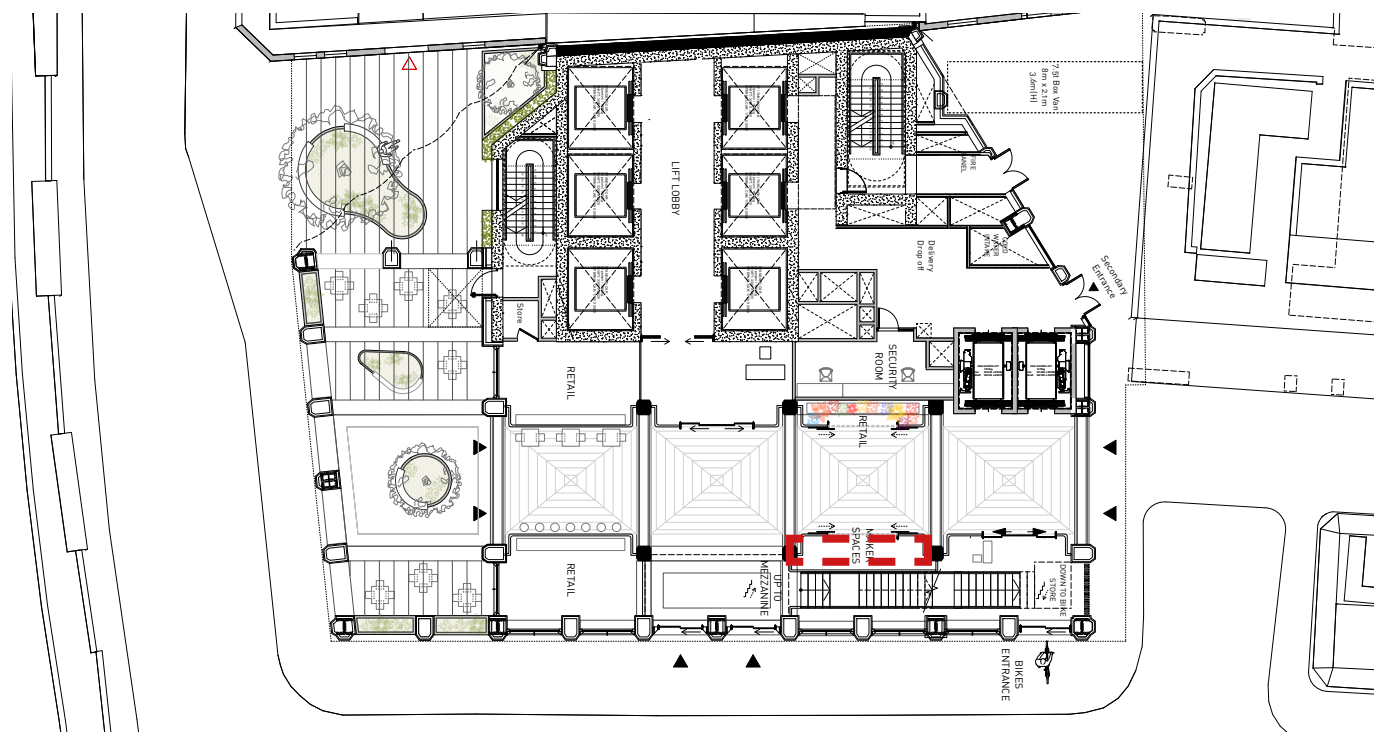
## 5.0 PUBLIC, COMMUNITY AND CULTURAL SPACE

### 5.4 Art and Cultural display

The spaces lining the arcade route are designed to be utilised as vitrines for a rolling programme of displays. This could include:

- + Artwork (collaborations with organisations such as City and Guilds of London Art school, Sculpture in the City, etc),
- + Local community group information,
- + Displays and reference to the important history of the site
- + Projects from local schools,
- + Products of local artisans, etc.

31 Bury Street aims to facilitate cultural and commerce exchange through creative activation, building skills and knowledge through cross-sector innovation as highlighted by the Cultural and Commerce Taskforce in their “Cultural and Commerce: Fuelling Creative Renewal” report.

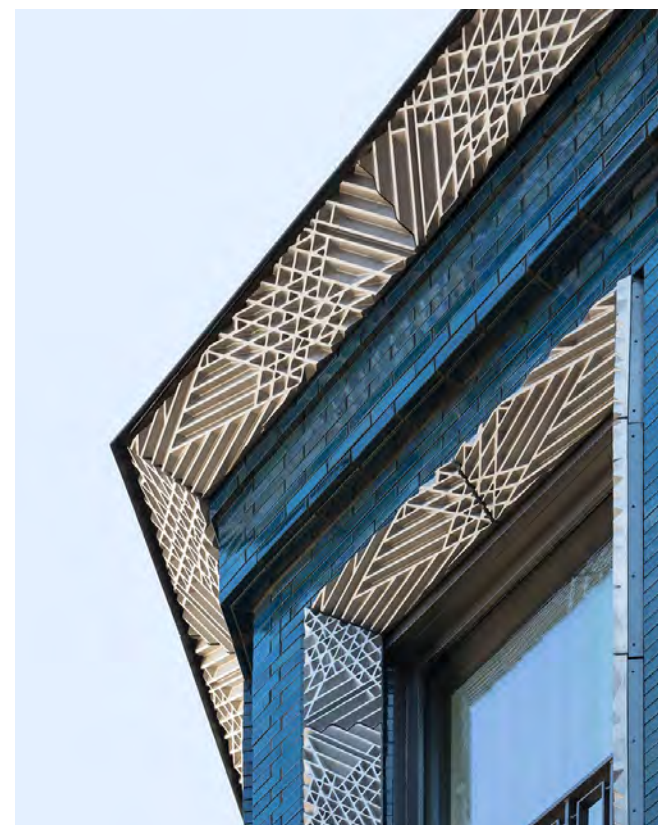




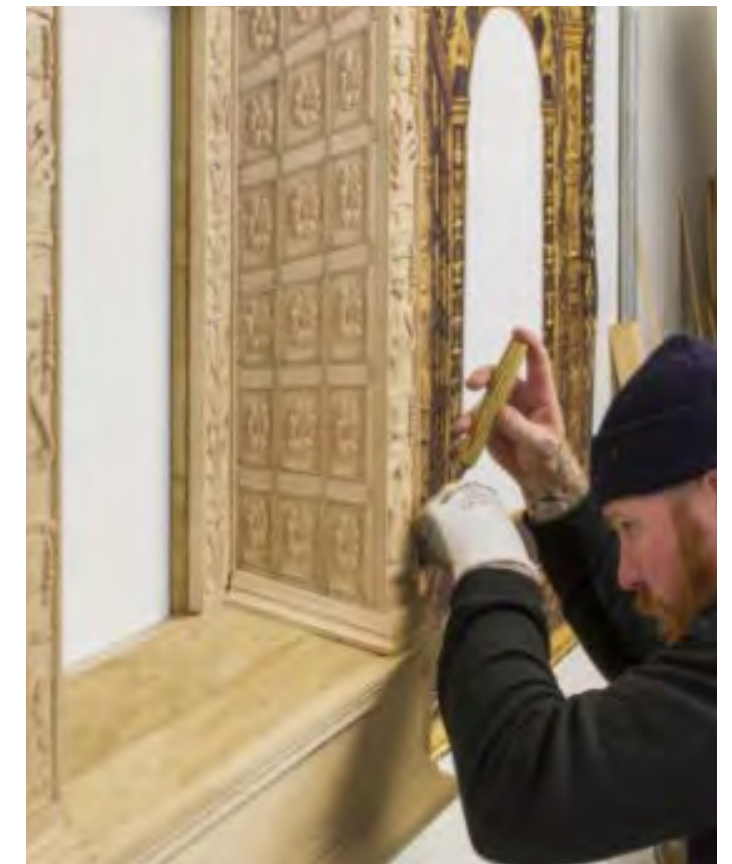
## 5.0 PUBLIC, COMMUNITY AND CULTURAL SPACE

### 5.6 Art Integration: The City & Guilds of London Art School

Within the public realm, it is proposed to have areas for the display of art installations, including sculptures, with the intention to use these areas for the showcasing of local artists' work, including but not limited to City & Guilds students.



Illustrative view showing potential temporary art work location



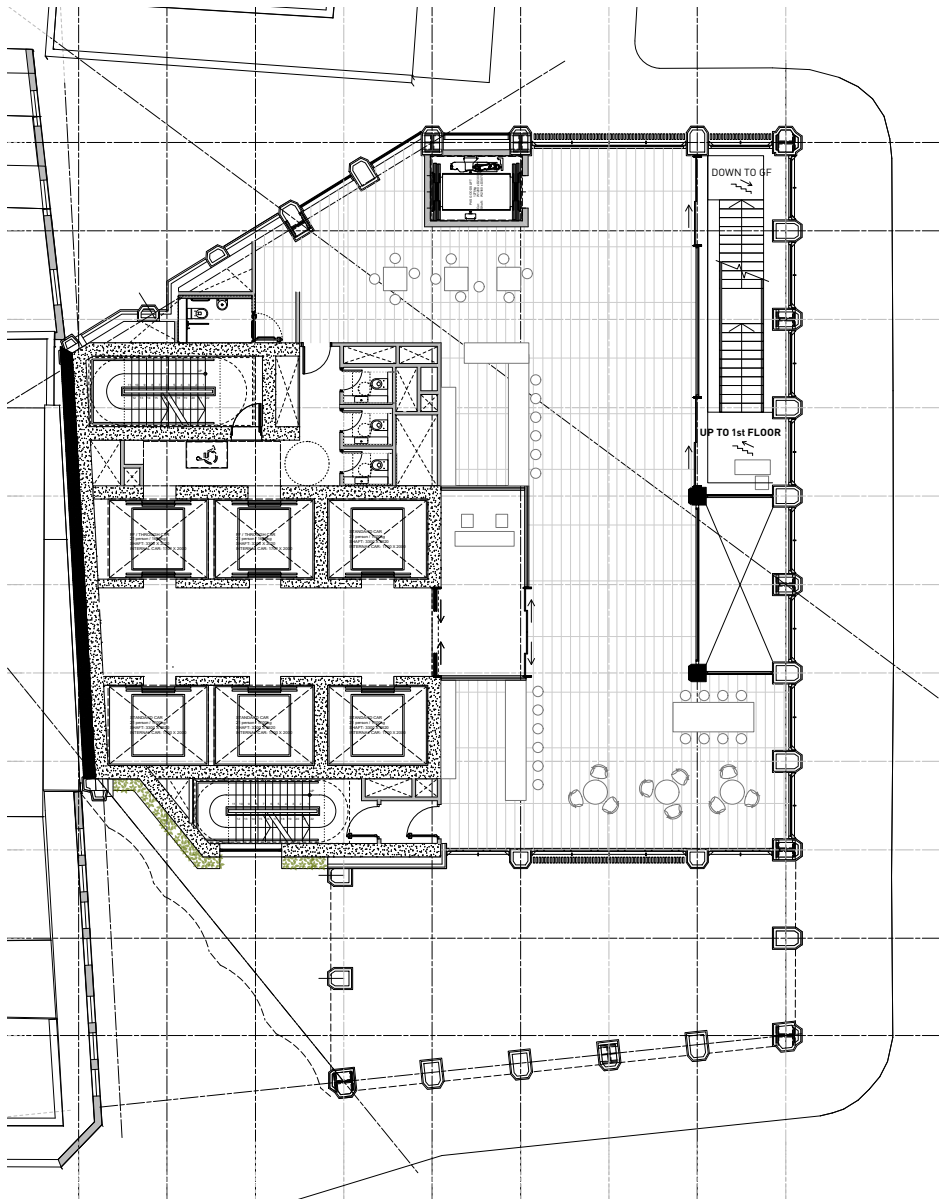


5.0 PUBLIC, COMMUNITY AND CULTURAL SPACE

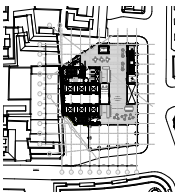
5.7 Proposed mezzanine floor



Illustrative view showing mezzanine floor



Proposed Mezzanine Floor Plan

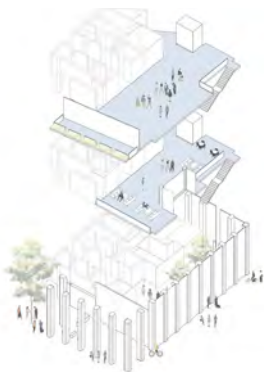




5.0 PUBLIC, COMMUNITY AND CULTURAL SPACE

5.8 Creechurch Hall: Hall

Sculpture in the City

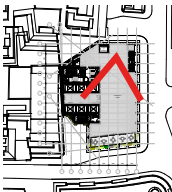


DBOX FOR B60

Illustrative view showing first floor level: Cultural Event



Proposed First Floor Plan



Open Layout:  
Standing Event - 480 people  
Mixed Standing and Seating - 360  
People

Meeting Room Layout:  
2 x 16 People Meeting Rooms  
1 x 8 People Meeting Rooms  
1 x 10 People Meeting Room  
3 x 4 People Meeting Table

Conference Layout:  
120 People Seated Auditorium  
Layout  
28 People in Presentation Room

Banquet Layout:  
220 People Seated



5.0 PUBLIC, COMMUNITY AND CULTURAL SPACE

5.9 Proposed first floor

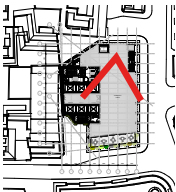
Aldgate School Lantern Parade



Illustrative view showing first floor level: Educational Event



Proposed First Floor Plan





# 6.0

# CREECHURCH

# ECOSYSTEM



6.0 CREECHURCH ECOSYSTEM

6.1 Creechurch Hive

- +

The building has been designed to operate as an incubator for SME businesses.

+

Affordable workspace is provided at L2 and the building caters for business growth and development within.

+

The smaller floor plates cater for the scale of 99% of City office occupiers.

+

The workspace is situated over and accessed from the public, community and cultural City activities at the base of the building.
- +

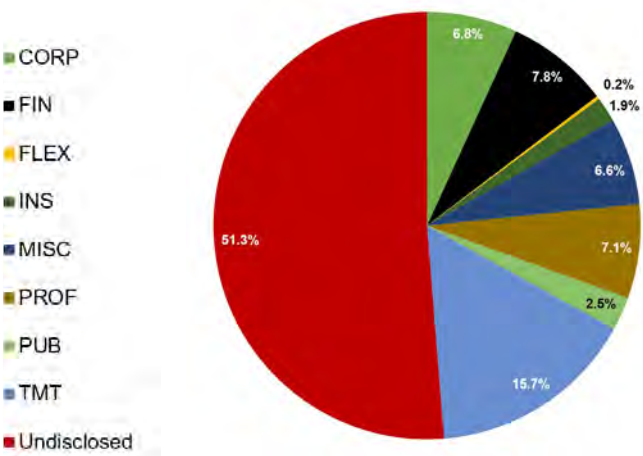
A communal hub has been located at the heart of the office accommodation to provide amenities and foster collaboration between businesses.

+

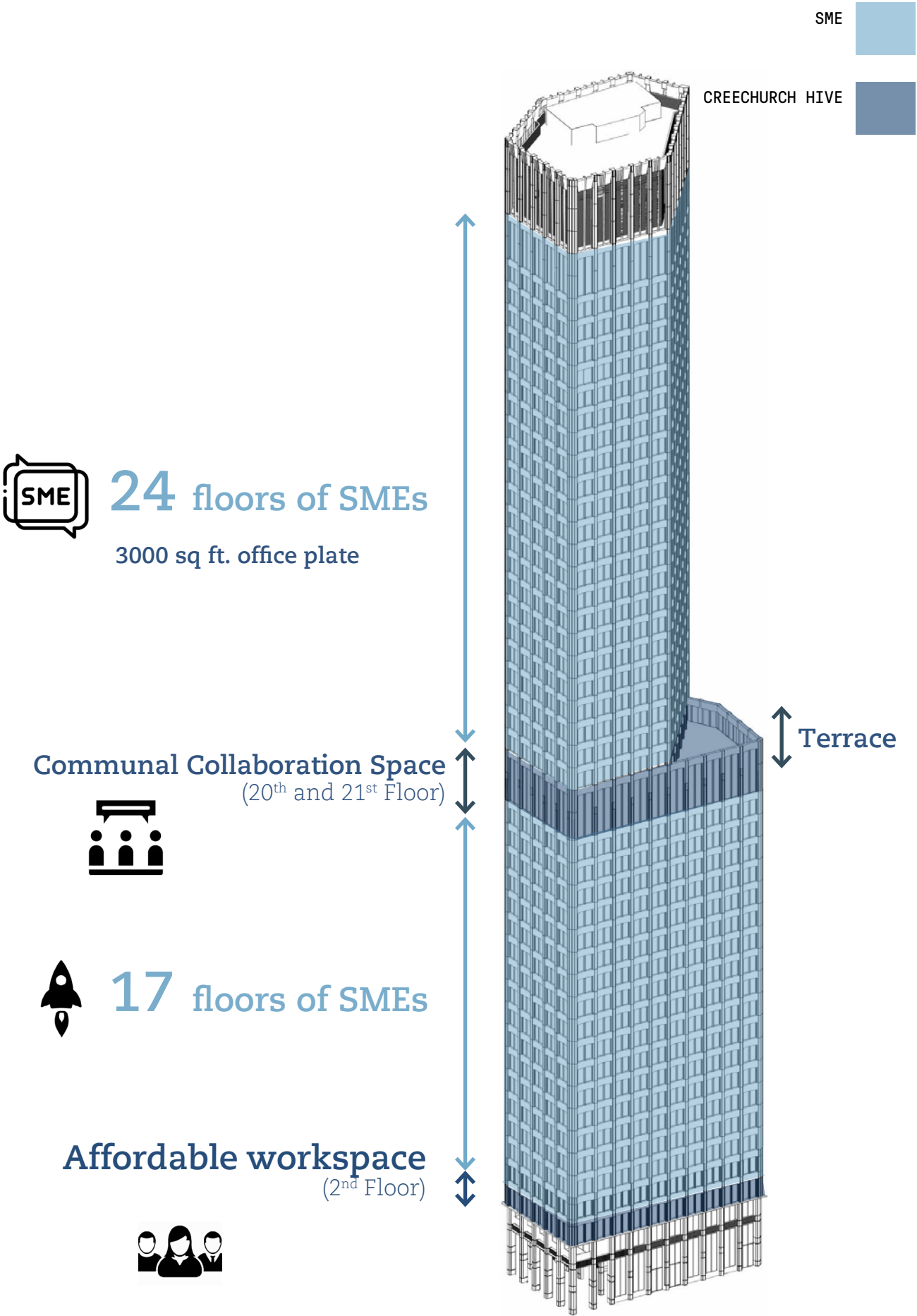
This collaborative community of businesses will be further supported through technology and rolling programs of events.



Diagram taken from CoL's corporate plan 2018-2023



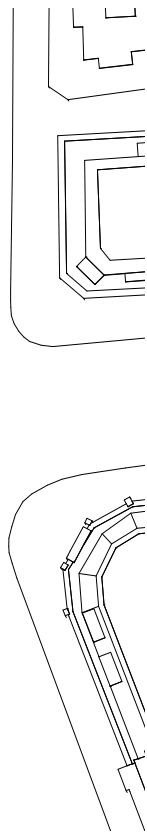
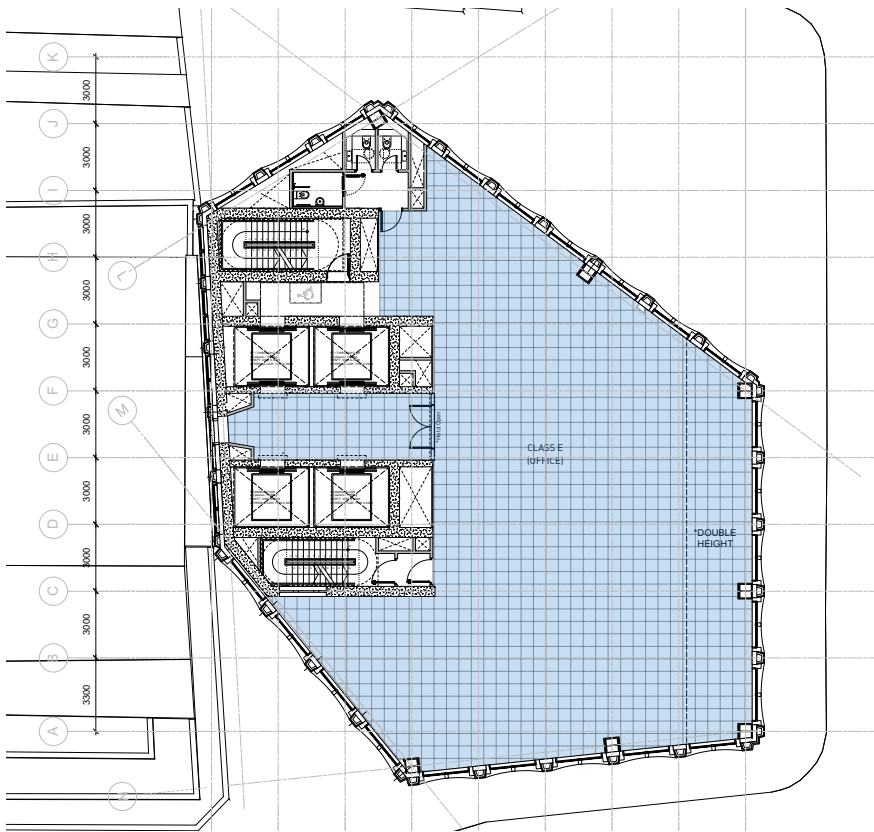
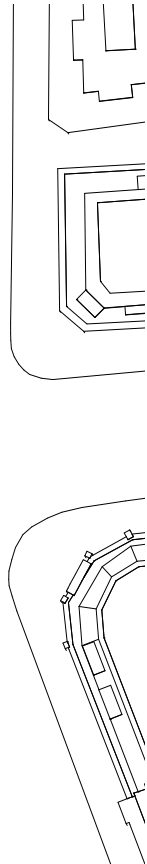
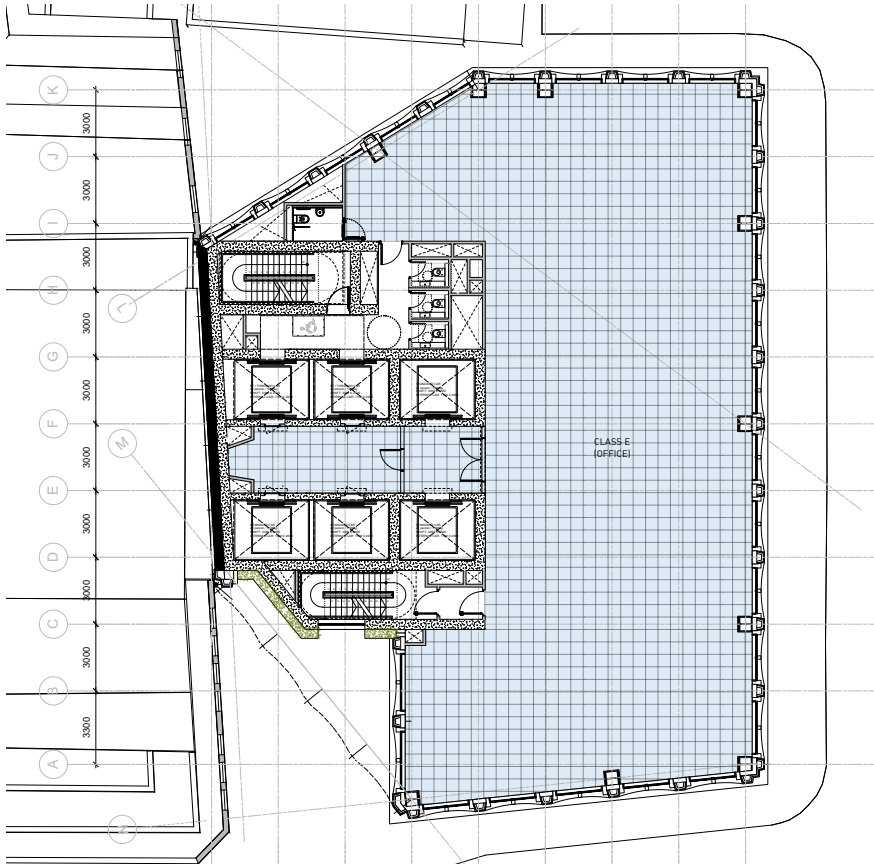
Pie chart showing % mix of tenants acquiring smaller floor plates





6.0 CREECHURCH ECOSYSTEM

6.2 Typical Office Floors



Mood Images

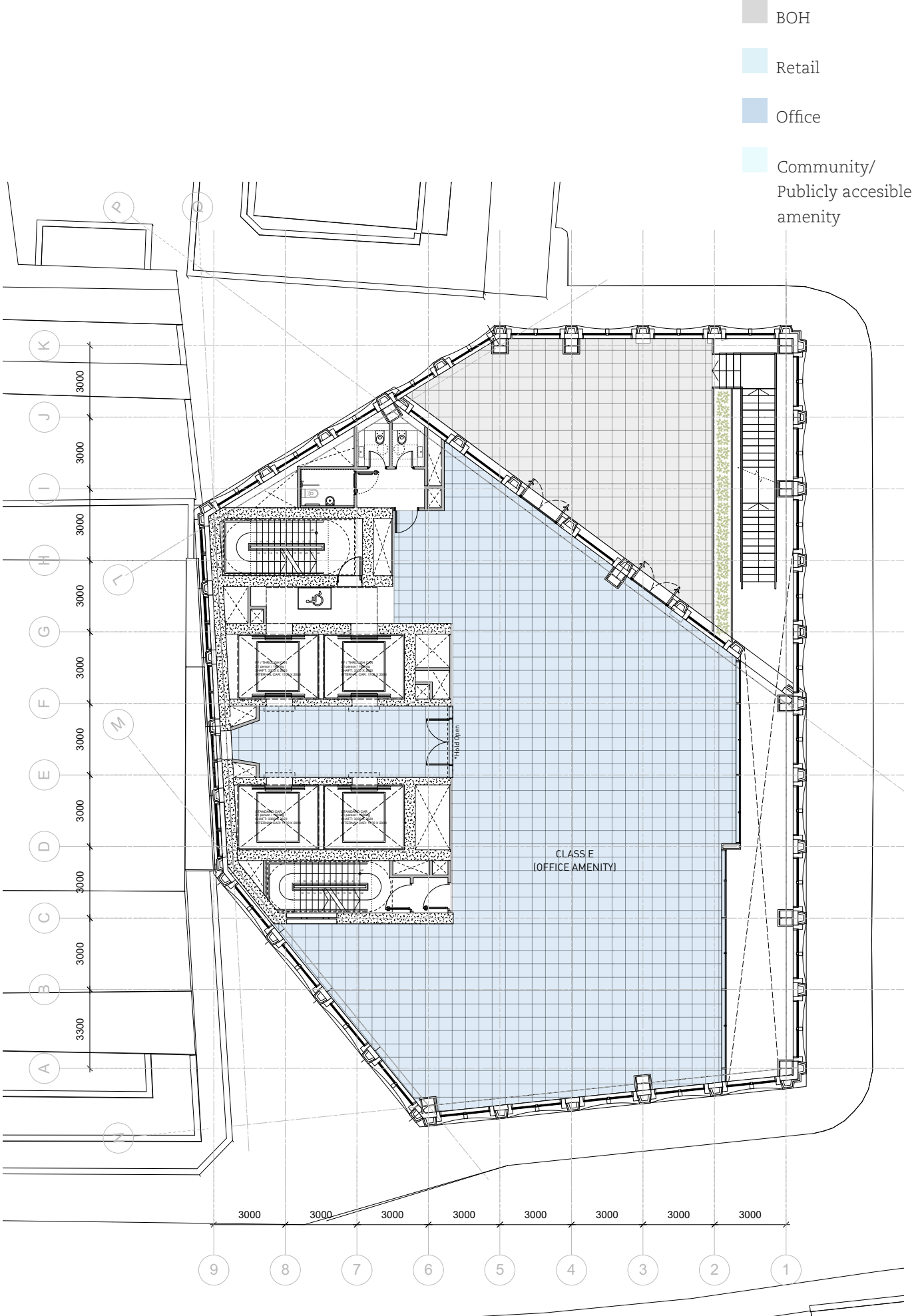
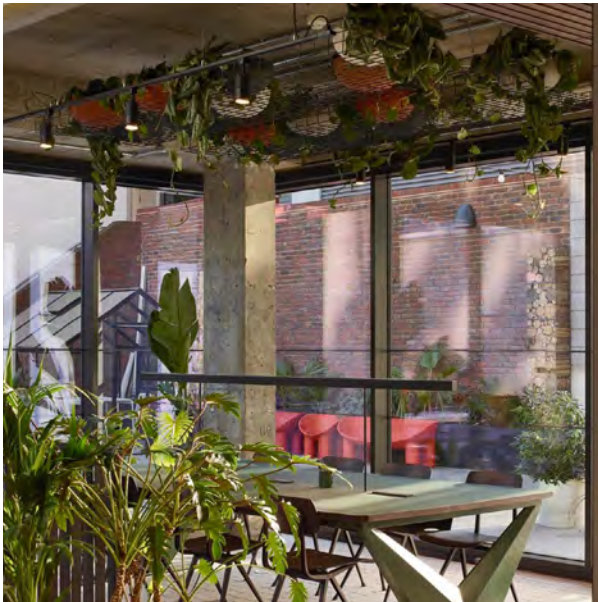


6.0 CREECHURCH ECOSYSTEM

6.3 Proposed 21<sup>st</sup> Floor



Mood Images





6.0 CREECHURCH ECOSYSTEM

6.4 End of Trip facilities

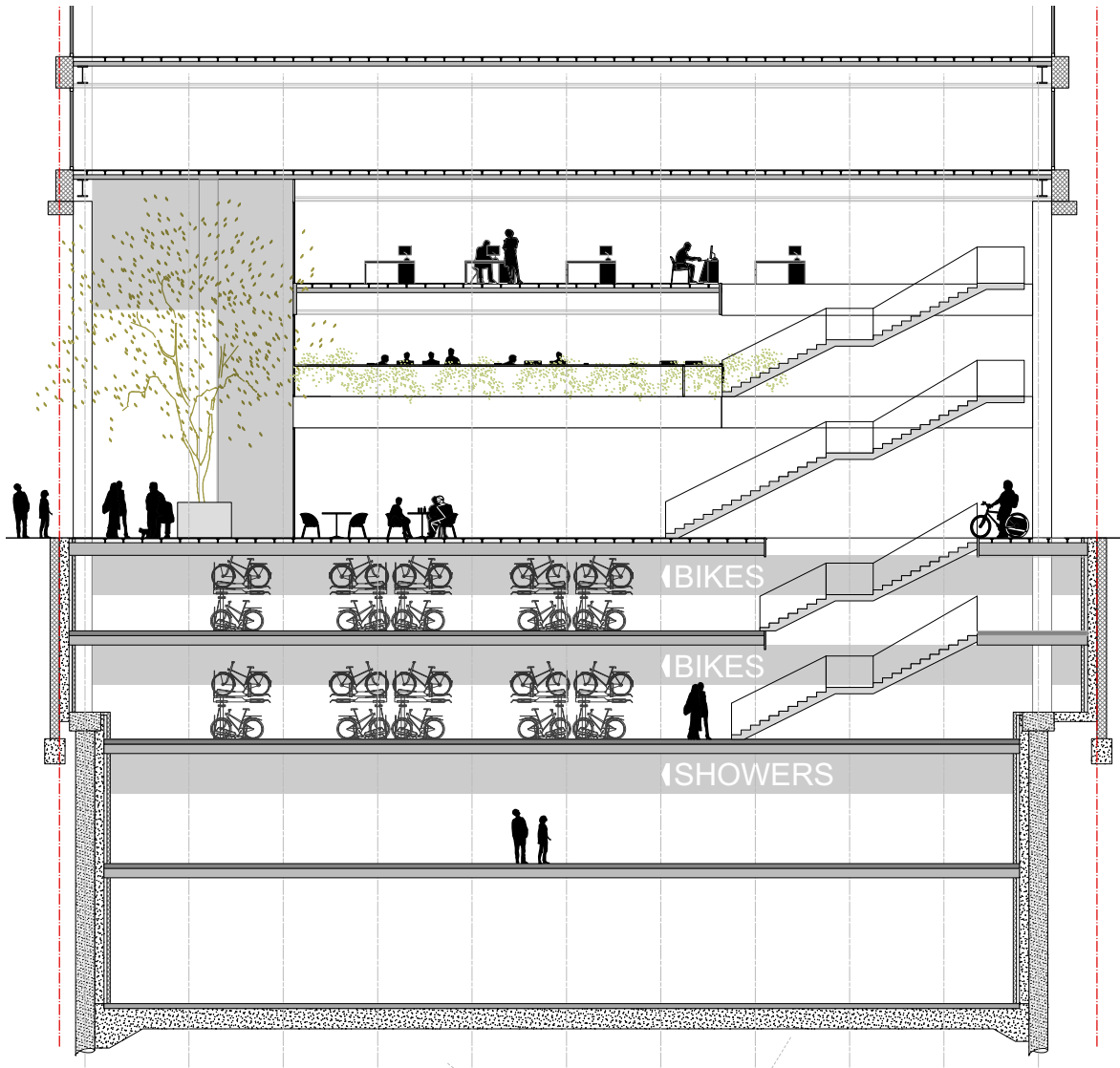
Number of bikes:

Long Stay 443  
Short Stay 26  
\*Total 469 bikes 451 lockers for Long Stay within secure area  
398 High-Density solutions [Standard 2 Tier Bike Rack] (85% of total)  
47 Folding Bike Lockers (10% of total)  
24 Sheffield Stand (5% of total)

Showers:

The shower and changing facilities are located at B2 Mezzanine and B2. The number of shower and lockers are in accordance with the New London Plan calculations.

Shower total 46 per Long Stay:  
18 Shower Male (40% of total)  
18 Shower Female (40% of total)  
10 Shower Unisex (20% of total)



Illustrative Section Showing End of Trip facilities



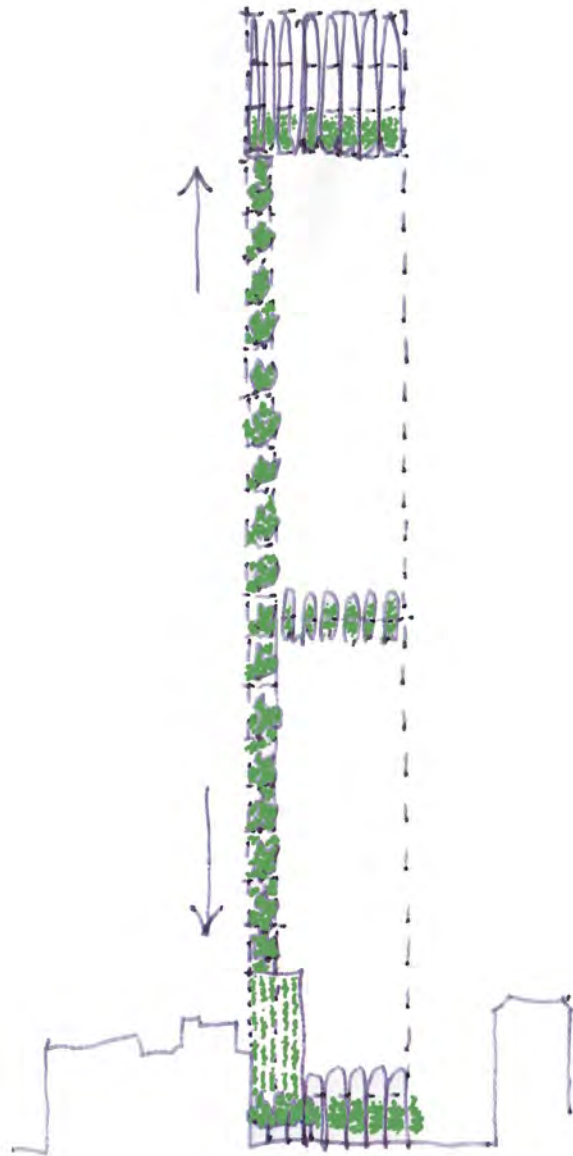
Mood Images



## 6.0 CREECHURCH ECOSYSTEM

### 6.5 Biodiversity

> 100m<sup>2</sup> of intensive planting.  
> 300 m<sup>2</sup> of green walls  
> 50 m<sup>2</sup> of green proof with additional permeable surfacing  
Overall UGF=0.46, 50% better than CoL minimum



Patrick Blanc's green wall on the Atheneum



The Ruben Hotel Victoria - Treebox System

Large textural green wall





# 7.0

## DESIGN OF FACADE



## 7.0 DESIGN OF FACADE

## 7.1 Local Context



London Stock Brick



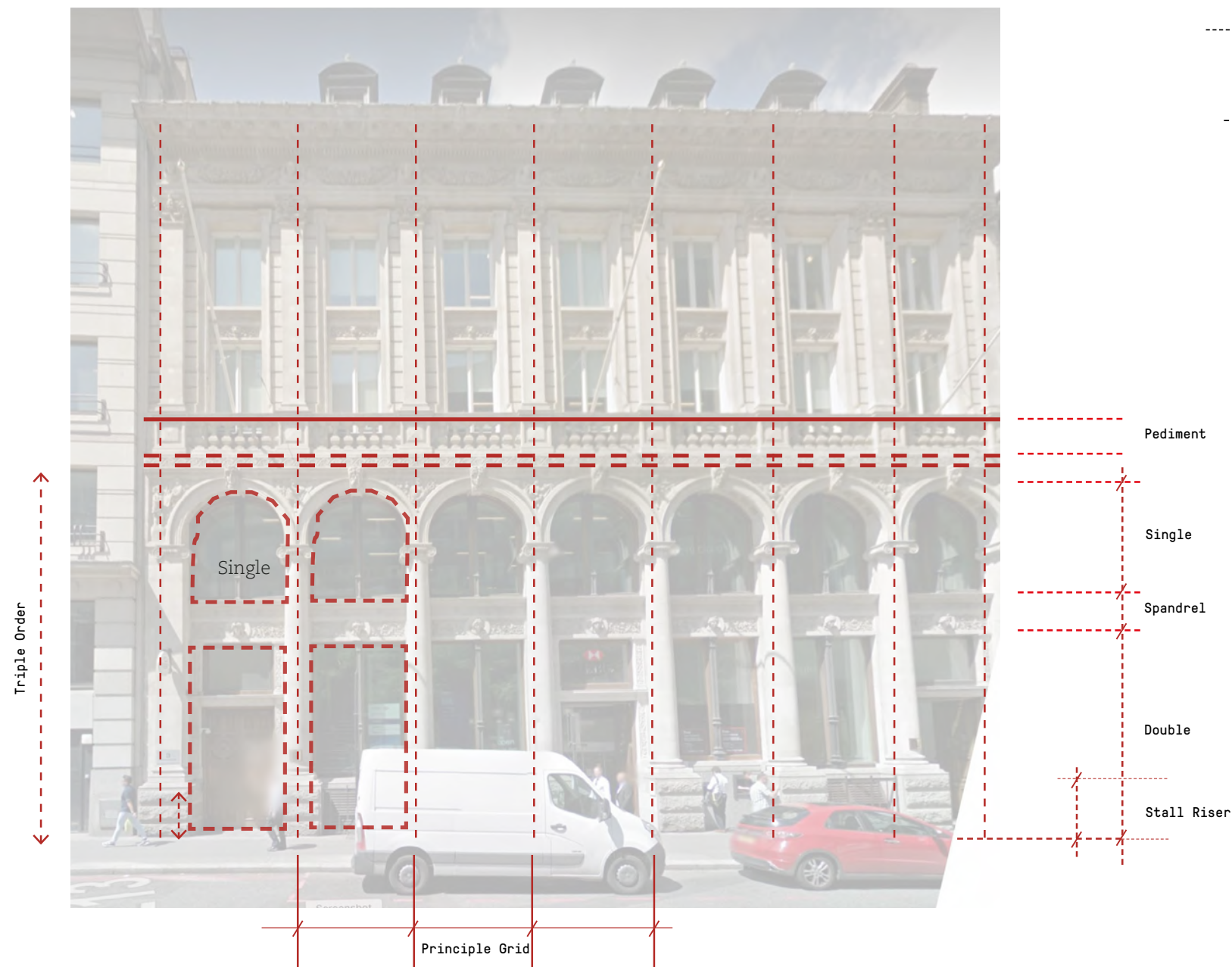
Terractotta



Portland Stone



Granite



### 3 Bishopsgate Elevation



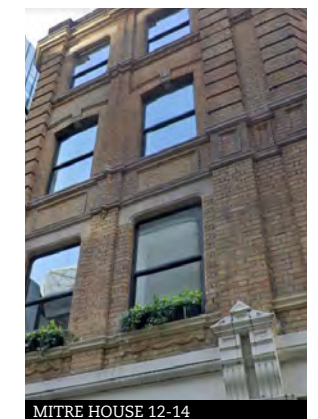
88 LEADENHALL S



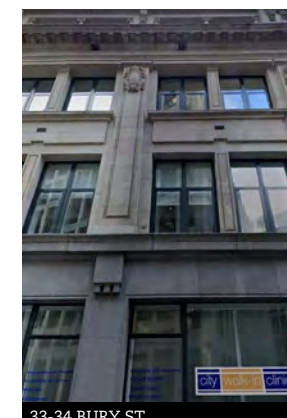
HOLLAND HOUSE



10-12 CREECHURCH LN



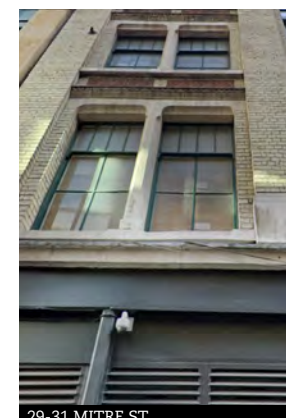
MITRE HOUSE 12-14



33-34 BIRBY ST



18-20 CREECHURCH LN



29-31 MITRE ST



BEVIS MARKS SYNAGOGUE