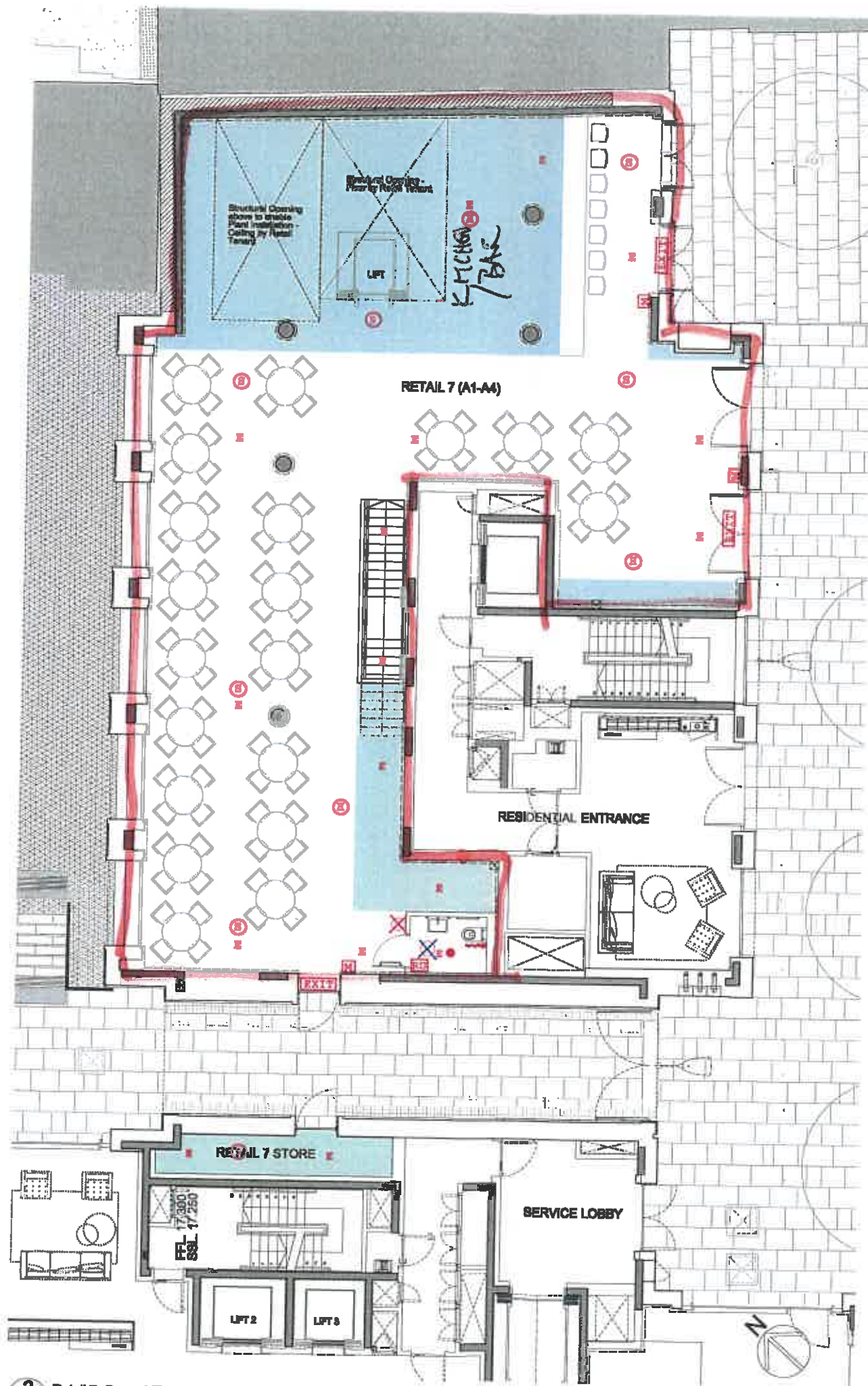
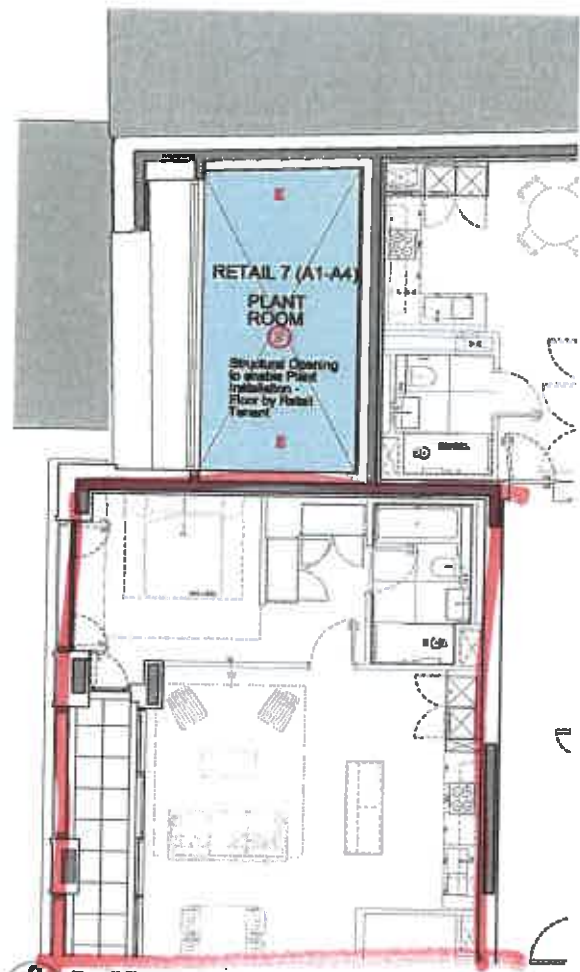


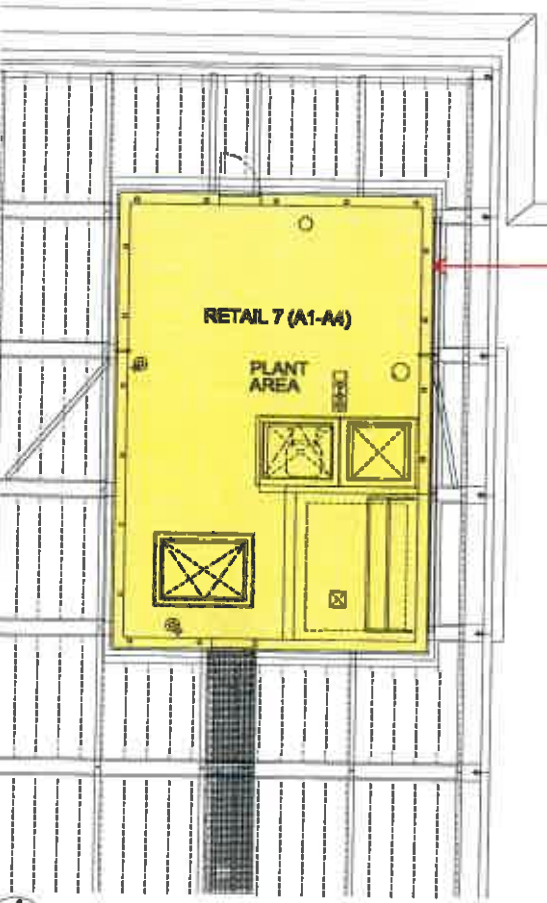
1 Retail 7: Basement Plan



2 Retail 7: Ground Floor Plan



3 Retail 7: First Floor Plan



4 Retail 7: Roof Plan

DISCLAIMER
The design is intended to be used as a guide only and is not intended to be used as a basis for construction or for any other purpose. The design is intended to be used as a guide only and is not intended to be used as a basis for construction or for any other purpose. The design is intended to be used as a guide only and is not intended to be used as a basis for construction or for any other purpose.

INDICATIVE AREAS
Indicative areas for Ecology Unit and other equipment on distribution of use of equipment from Client.
Indicative base of house areas (kitchen, store, storage, services)

- ① — HEAT DETECTOR
- ② — SMOKE DETECTOR
- ⓧ — EMERGENCY LIGHTING
- EXIT — EXIT SIGNAGE
- Ⓜ — MANUAL CALL POINT
- ⓧ — ELON REASSURANCE LAMP
- ⓧ — OVERDOOR LAMP
- Ⓜ — RESET UNIT
- Ⓜ — FULL CORD
- Ⓜ — FLASHING BEACON

SWECO
RETAIL UNIT-7
FIRE ALARM MARK-UP
115380/MSA

Draft
14.03.2019

NO.	DATE	REVISION
1		
2		
3		
4		

FOR ELECTRICAL SERVICES WITHIN THIS AREA PLEASE REFER SWECO DRAWING NO: 115380/7/2203



CLIENT: BARTS TWO INVESTMENT PROPERTY LTD

SHEPPARD ROBSON
27 Paternoster Square, London EC4M 3DF
TEL: 020 7460 8000
FAX: 020 7460 8001
WWW.SR.CO.UK
PROJECT: BARTS SQUARE LONDON DC1
DRAWING NO: 115380/7/2203
DATE: 14.03.2019
SCALE: AS SHOWN
TYP: GENERAL ARRANGEMENT
PAGE: 3
RETAIL 7 FIT-OUT OPTION
JOB CONTRACT
DRAWING NO: 115380-7/2203