

Committee:	Dated:
City Health and Wellbeing Children and Community Services Committee	15th July 2022 - Decision 20th July 2022 - Information
Subject: Proposal for a Joint Children's & Families Health and Wellbeing Framework	Public
Which outcomes in the City Corporation's Corporate Plan does this proposal aim to impact directly?	1: People are safe and feel safe 2: People enjoy good health and wellbeing 4: Communities are cohesive and have the facilities they need
Does this proposal require extra revenue and/or capital spending?	No
If so, how much?	NA
What is the source of Funding?	NA
Has this Funding Source been agreed with the Chamberlain's Department?	NA
Report of: Andrew Carter, Director of Community and Children's Services Dr Sandra Husbands, Director of Public Health	For Decision For Information
Report author: Chris Lovitt, Deputy Director of Public Health chris.lovitt@cityoflondon.gov.uk	

1. Summary

- 1.1. This paper outlines a proposal to develop a Joint Children & Families Health and Wellbeing Framework (the Framework) that will be aligned to the City and Hackney system vision, 9 system strategic priorities, and to the overarching systems integrated outcomes framework, which may include NHS, public health, social care and educational outcomes, as relevant.
- 1.2. The Framework will be accompanied by a 5-year action plan (2022 - 2027) summarising the approach to integrated children and families' services across all wards of the City of London Corporation and the London Borough of Hackney, for all users aged 0 - 19 (25 years for those who are owed a statutory responsibility). The plan will outline the stages of the journey from where we are now, to an integrated children's and families' service.

- 1.3. The vision of delivering integrated children and family services has been a long-held ambition for the City of London & Hackney, to support children, young people and their families to have the best start in life, reduce health inequalities and maximise health and wellbeing. The recent announcement of funding for a three-year Hackney Family Hub programme, the current re-commissioning of 0-19 Public Health commissioned services and other changes at a local and national level i.e. the [Joining up care for people, places and populations, white paper Feb 2022](#), serves as a timely opportunity to further explore innovative working and to drive the integrated working agenda forward.
- 1.4. This work will be jointly led by the Children, Young People, Maternity and Families (CYPMF) Integrated Care Workstream and Public Health, however success will be based on close working with all of our partners to assemble this.

2. Recommendations

Committee members are asked to:

- 2.1 Note, and endorse the continued direction of travel, in terms of partnership and integration across the breadth of children's health, mirroring current integration of children's social care and education, and progressing integrated children's health work to date
- 2.2 Endorse and approve the establishment by the City of London Corporation (with Hackney Council and other applicable partners) of a Joint Children and Families Health Framework as a mechanism to support this
- 2.3 Endorse and approve the development of several key partnership principles that will underpin all children's health work going forward, to be formally agreed and signed up to by all relevant partners

Main Report

3. Background

- 3.1 The [2022 City & Hackney Health Needs Assessment](#) highlights the large disparities that exist between children and young people, particularly for: vulnerable children and young people, those from ethnic backgrounds other than white and for children and young people with special educational needs and disabilities (SEND).
- 3.2 The City of London and Hackney have been planning and delivering integrated work strategically over the past 4 years through close

partnership working developed as part of integrated structures across the National Health Service, Clinical Commissioning Groups, the City of London Corporation, the London Borough of Hackney, partner organisations, the Voluntary Community Sector, and with residents and families. Much of this work is already articulated in places across the system, and the Integrated Children & Families Health Framework will support this.

- 3.3 The development of the wider North East London Integrated Care Partnership, and our local City and Hackney Place Based Partnership have both prioritised improving outcomes for children and young people over the next few years, and while much of this is still in development, a local joint framework and key principles will support delivery of these at the geographical point of place.
- 3.4 We already have a lot to build on locally. We have a number of excellent children's health services across the City and Hackney footprint, including the 6th best performing suite of Child and Adolescent Mental Health services in the country, as identified by the Office of the Children's Commissioner recently. We want to strengthen our direction of travel toward integrated planning and delivery in order to further improve health outcomes and tackle some of our key challenges together. We have a strong record of being most effective, where we have worked together.
- 3.5 The [City & Hackney Integrated Strategy for Children and Young People's Emotional Health and Wellbeing Strategy 2021-2026](#) has already been developed. This contains a range of interventions being developed and delivered jointly as part of the children and families elements of the Neighbourhoods Programme, providing opportunities to trial more innovative approaches to integrated working.
- 3.6 Significantly, a joint framework and a set of key principles will support the current re-commissioning of the 0-19 (up to 25 years for those with a statutory responsibility) public health services (health visiting, family nurse partnership, school nursing and others), and other significant developments.
- 3.7 Consultation undertaken with 42 stakeholders as part of the [2022 City & Hackney Health Needs Assessment for Children and Young People 0 - 19](#) (up to 25 years for those with a statutory responsibility) identified that services need to be joined up at a strategic level to deliver maximum impact; joint principles, structures and ways of working that will support the integration of services and the re-commissioning of 0-19 services are urgently needed. Financial constraints, staffing challenges (recruitment and retention), rising demand, increasing levels of complex needs, and

widening health inequalities (mainly due to the impact of COVID) have increased pressure on services.

3.8 The joint health framework will consolidate and support our strategic direction, embed key integration principles and outline the direction of travel for the re-commissioning and provision of 0-19 services. It will serve as a blueprint for new ways of working that could potentially lead to changes in organisational structures, working processes and cultures including the possible integration of services, the pooling of budgets and/or in-sourcing.

3.9 We already have a lot to build on locally. We have a number of excellent children's health services across the City and Hackney footprint, including the 6th best performing suite of Child and Adolescent Mental Health services in the country, as identified by the Office of the Children's Commissioner recently. We want to strengthen our direction of travel toward integrated planning and delivery in order to further improve health outcomes and tackle some of our key challenges together. We have a strong record of being most effective, where we have worked together.

3.10 [*Integration and Innovation: working together to improve health and social care for all \(2021\)*](#), [*Health and Care Act 2022*](#) and the [*White paper: Joining up care for people, places and populations, Feb 2022*](#) have set out the legislative proposals to accelerate the pace of integration. Within the overall structure and oversight of integrated care systems (ICSs) and local authorities. The white paper includes new duties to: collaborate, deliver improvements in data sharing and improved health and wellbeing outcomes, and an amendment to section 75 of the 2006 NHS Act to support pooled budgets between the NHS, local government, and wider delivery partners. This is a timely opportunity to accelerate integrated working and to drive this ambition forward within existing budgets.

4. Current Position

4.1. A lot of work on integrating services has already been undertaken or is at the planning stage, the framework and action plan will assemble these across the Children Young People Maternity and Families workstream governed by the Integrated Care Partnership Board (ICPB) and those in process or planned by City & Hackney Public Health, City of London Corporation, Hackney Council and wider partners. This will establish a baseline of integrated practice and identify areas of learning and good practice.

- 4.2. A number of partners already work closely together to support families in the City of London. This includes the City Child and Family Centre and the Early Help Team who work collaboratively to support vulnerable families as early as possible. The City of London Family Information Service website offers free and impartial information about local events and services available to children, young people and families living and working in the Square Mile. This includes a reviewed and updated Local Offer. The City of London is also currently consulting on a new Children & Young People's Plan 2022-25 that sets strategic outcomes and priorities on how we work with our partners to improve the lives of children and young people who live and access services in the Square Mile.
- 4.3. There are also proposals going to the City of London's Community & Children's Services committee for a separate City of London Family Hub for children and young people aged 0-19 (0-25 if they have SEND)
- 4.4. We already have a lot to build on locally. We want to strengthen our direction of travel toward integrated planning and delivery in order to further improve health outcomes and tackle some of our key challenges together. The integration proposals will need to consider the specific needs of different communities in the City of London, especially those families who have traditionally been less likely to engage or access services.

5. Proposals

- 5.1 Note, and endorse the continued direction of travel, in terms of partnership and integration across the breadth of children's health, mirroring current integration of children's social care and education, and progressing integrated children's health work to date
- 5.2 Endorse and approve the establishment by the City of London Corporation (with Hackney Council and other applicable partners) of a Joint Children and Families Health Framework as a mechanism to support this
- 5.3 Endorse and approve the development of several key partnership principles that will underpin all children's health work going forward, to be formally agreed and signed up to by all relevant partners

6. Options

Not to develop a framework for City and Hackney

7. Key Data

The small size of the resident population poses a problem to strategic planning

- 2940 children and young people (0- 25) live in the City of London
- 11 children in need
- 19 children with an Educational Health and Care (EHC) Plan
- 10 looked after children
- 55 care leavers

8. Corporate & Strategic Implications

Strategic implications

The proposed 'Framework' will be aligned to the City and Hackney System Vision, its 9 system strategic priorities, and to the overarching systems integrated outcomes framework. It will also align with the following outcomes of the City of London Corporate Plan:

- Outcome 1: People are safe and feel safe
- Outcome 2: People enjoy good health and wellbeing
- Outcome 4: Communities are cohesive and have the facilities they need

Financial implications

There are currently no financial implications of adopting a framework.

Resource implications

None

Legal implications

There are no particular legal implications flowing from the tabled proposals.

Risk implications

There are no financial or reputational risks however there is a risk of the project being subject to delays due to lack of buy-in/or responsiveness to survey/data requests which could impact the project timetable. However, this will be addressed by ensuring the project proposal is shared widely before initiation.

Equalities implications

An equality impact assessment (EIA) will be undertaken as part of the development of the Framework. The framework will set out how greater equity and equality will be achieved, and health inequalities reduced.

Climate implications

None

Security implications

None

9. Conclusion

- 9.1. Committee members are asked to note, and endorse the continued direction of travel, in terms of partnership and integration across the breadth of children's health and to approve the development of a Children and Families Integrated Health Framework as a mechanism to support this. Members are also asked to approve the development of several key partnership principles that will underpin all children's health work going forward, to be formally agreed and signed up to by all relevant partners.
- 9.2. The integrated health framework will help provide strategic direction for the re-commissioning of 0-19 services and potentially pave the way for key decisions on staffing structures/services, in-sourcing and pooled budgets over the next 5 years.
- 9.3. This proposal has been shared with the following groups/individuals and updated in line with feedback:
- Internal Integrated Programme Board City of London Board 11/4/22
 - VCS Children and Families Forum Meeting 20/04/22
 - CYPMF Strategic Oversight Group 21/4/2022
 - PH SMT - 3/5/2022 & 10/5/2022
 - City DLT 1/4 corporate business meeting- 11/5/2022
 - LBH C&E SLT - 18/5/2022
 - CYPMF Business Performance Oversight Group -19/5/2022
 - Councillor Woodley (Cabinet Member for Families, Early Years, Parks and Play) - 23/5/2022
 - Councillor Bramble (Children's Lead and Deputy via email) - 24/5/2022
 - Councillor Kennedy (Cabinet Member for Health, Adult Social Care, Voluntary Sector and Culture) - 25/5/2022
 - CYPMF Neighbourhoods Steering Group - 13/6/2022
 - Councillor Ruby Sayed, City of London - 22/6/2022
 - Councillor Helen Fentimen, City of London - 28/6/2022
 - Hackney Cabinet - 27/6/2022
 - City of London Health & Wellbeing Board - 15/7/2022
 - CCS committee agenda - 20/7/2022
 - Hackney Health & Wellbeing Board - 2/9/2022
 - **CCG SMT - tbc**
 - **Adult Health & Integration SMT - tbc**
 - **Children & Young People's Partnership Board for the City - tbc**
 - **Partnership Delivery Group - tbc**

- **Neighbourhood Health & Care Board - tbc**
- **Integrated Health and Care Partnership Board - tbc**

Report authors

Chris Lovitt,
Deputy Director of Public Health
chris.lovitt@cityoflondon.gov.uk

Angela Birch,
Senior Public Health Specialist, Children & Young People
angela.birch@hackney.gov.uk

Appendix A: Joint Children & Families Health & Wellbeing Framework project outline

1. Project Outline

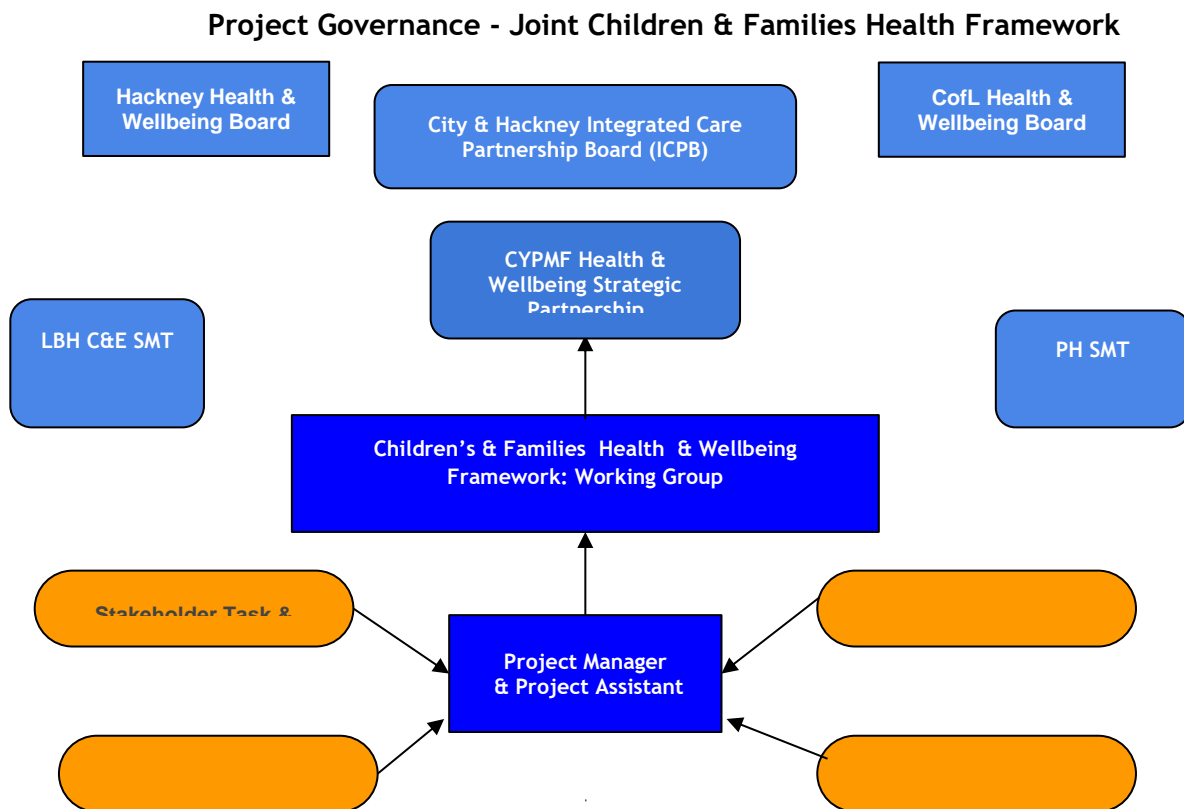
To develop a Joint Children & Families Health and Wellbeing Framework (the Framework) that will be aligned to the City and Hackney system vision, 9 system strategic priorities, and to the overarching systems integrated outcomes framework, which may include NHS, public health, social care, and educational outcomes, as relevant.

The Framework will be accompanied by a 5-year action plan (2022 - 2027) summarising the approach to integrated children and families' services across all wards of the local authorities of the City of London and Hackney, for all users aged 0 - 19 (25yrs for those who are owed a statutory responsibility). The plan will outline the stages of the journey from where we are now, to an integrated children's and families' service.

1.1 Project Sponsors

- Amy Wilkinson, Integrated Commissioning Workstream Director: City and Hackney Children, Young People, Maternity and Families
- Chris Pelham, Assistant Director People at City of London Corporation
- Jackie Burke, Group Director of Children and Education
- Chris Lovitt, Deputy Director of Public Health

1.2 Project Governance



2. Deliverables

- an overarching children and families integrated health framework, which will outline our principles / objectives against which we commission. This will be in line with, and support work by the ICPB and Place-based delivery group's outcome framework development.
- a vision statement and a set of agreed principles for planning and delivery of children's health services across City and Hackney
- a 5-year action plan which will provide an overview of how this will be achieved through our new City and Hackney Place Based Partnership

3. Scope

Out of scope of project lifecycle but to be included in action plan: pooled budget to support the implementation of action plan and commitment to complete shared data agreements. We are still awaiting confirmation of budgets at this stage.

4. Timetable: April - September 2022 (27 weeks)

	April 22	May 22	June 22	July 22	Aug 22	Sept 22
1: Project proposal/Initiation	12/04 PH SMT	03/05 PH SMT 25/5 City DLT	Hackney Cabinet 27/6	City of London HWB 15/7 CCS committee 20/7		Hackney HWB 2/9
2: Project Planning - mapping CYP Strategies to System Priorities and HIA		Complete Mapping City & Hackney CYP Strategies against System Priorities & HIA				
3: Joint Children & Families Health & Wellbeing Working Group meetings			Monthly Meetings			
4: Trip/On-line workshop with Greater Manchester - Best Practice around developing an Integrated Framework						
5: Project Planning - agree assessment tool/undertake assessment of integration types in place/planned				Collate Integration activity in place/planned over 5 years		
6: Project Planning - visioning & key structures and principles for integration agreed (workshops)						Workshops - CYP & Stakeholders
7: Project Planning - Agree Joint Children & Families Health Framework report template					Templ ate & contrib utors agreed	
8: Project Execution - undertaking and assembly of the					Four Task & Finish Groups	

Framework & Action Plan						
9: Project Execution - Draft Framework & Action Plan						Collating and presentation
10: Joint Children & Families Health & Wellbeing Framework, 2022 - 2027 Action Plan						Project Closure

***Risk - timeline could be impacted by availability of staff during summer period**

5. Resources

The project will be led by a Project Manager (Senior Public Health Specialist, CYP) and a Project Administrator based in City & Hackney Public Health, supported by the various leads in the CCG/ICP, LA, CVS, HUH, and others

6. Next Steps:

- Establish Working group to develop detailed Project Plan
- Governance through the Children's Integrated Children's Strategy Partnership Working Group (utilising existing CYPMF Integrated Workstream Board)
- Support and sense checking to be undertaken through PHSMT and LBH C&E SMT (monthly monitoring)