

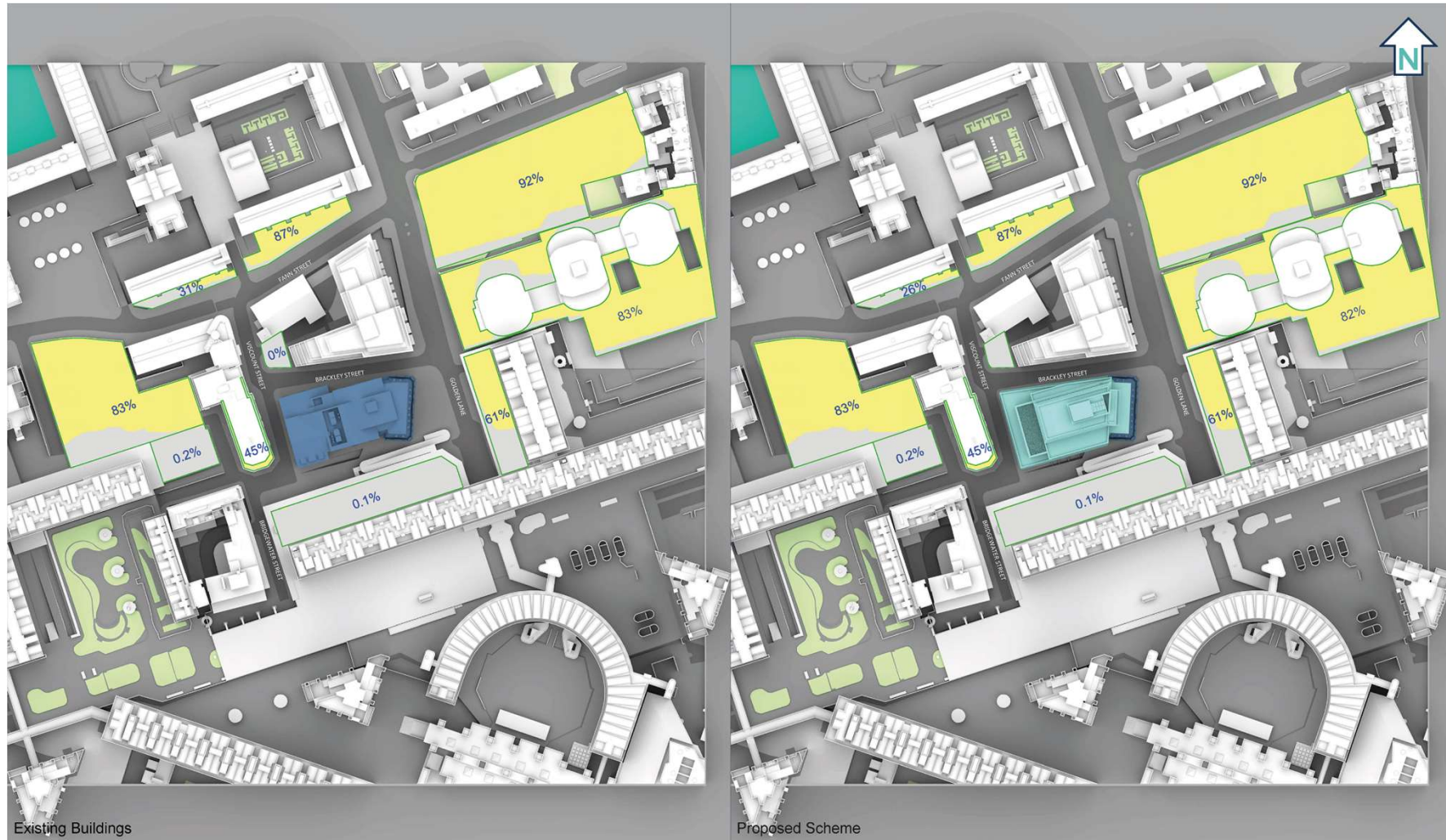


1 Golden Lane, EC1Y 0RR
Planning & Transportation Committee
Supplementary Drawing Pack
01.11.2022

1 Golden Lane

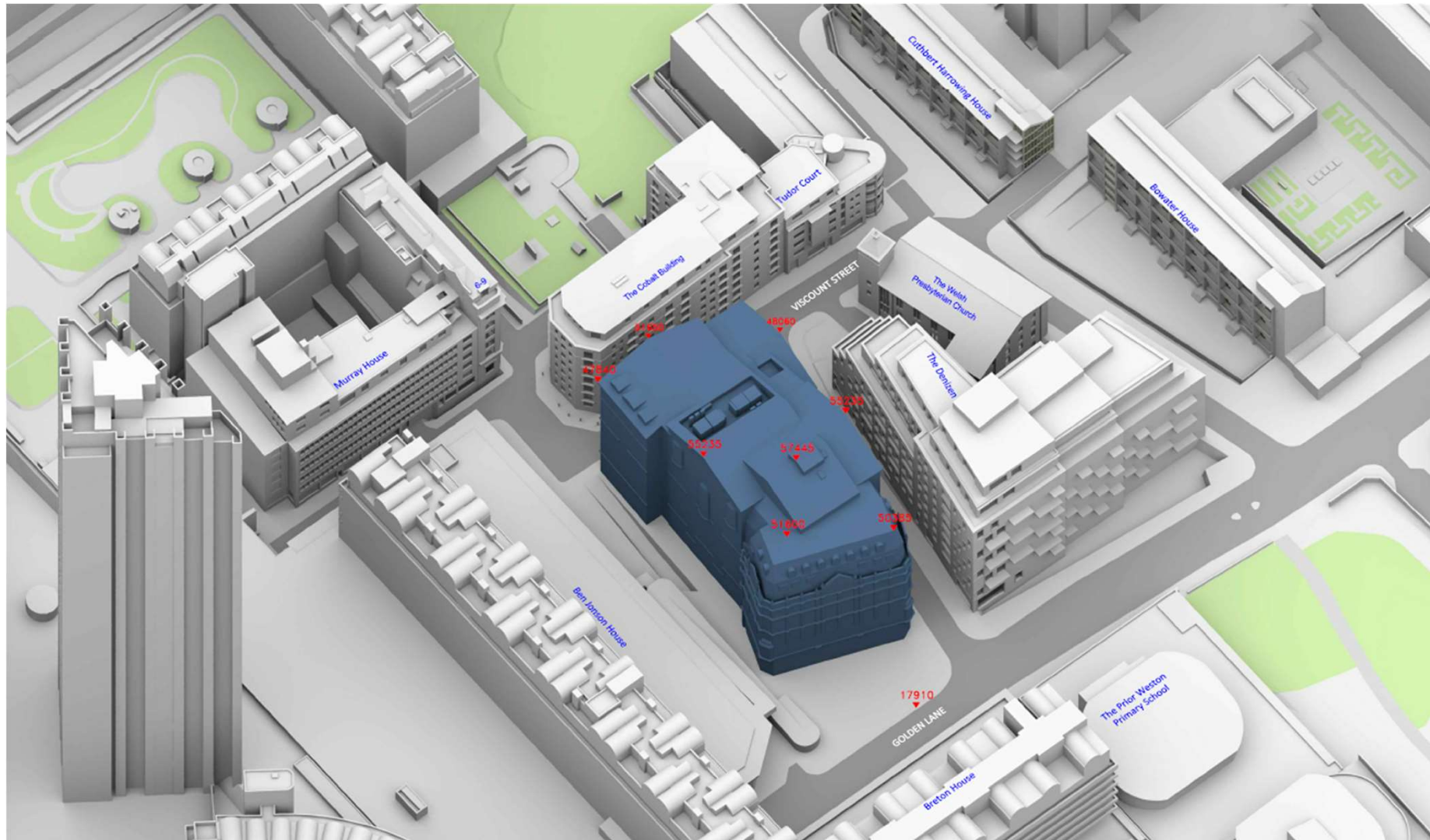
Address	Total No. of Windows	Fully VSC Compliant?	Total No. of Rooms	Fully NSL Compliant?	Fully APSH Compliant?
Tudor Rose Court	39	Yes	22	Yes	Yes
Ben Jonson House	181	Yes	181	Yes	Yes
Breton House	60	Yes	54	Yes	Yes
The Prior Weston Primary School	17	Yes	7	1 Isolated anomaly due to overhang	Yes
The Welsh Presbyterian Church	206	3 Isolated anomalies due to overhangs	36	Yes	Yes
Cuthbert Harrowing House	76	4 Isolated anomalies due to overhangs	49	3 Isolated anomalies due to overhangs	Yes
Bowater House	116	7 Isolated anomalies due to overhangs	76	Yes	Yes
The Cobalt Building	149	7 Minor Adverse	106	Bedrooms less important, 3 LKDs Minor Adverse	Yes
The Denizen	145	30 Minor Adverse, 13 Moderate Adverse	61	Bedrooms less important, 1 LKD Moderate Adverse	All but 2
Total	989		592		

1 Golden Lane



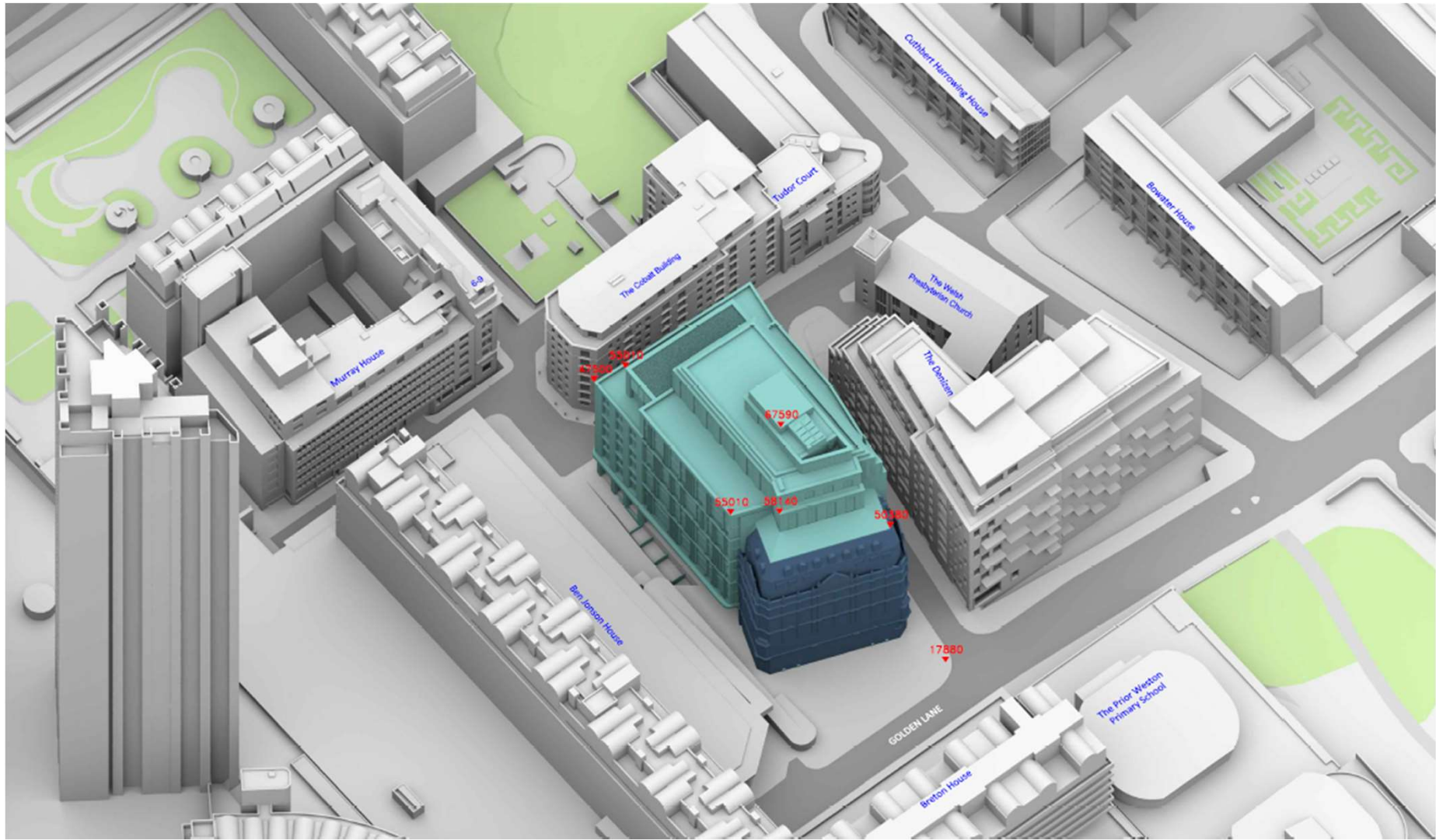
BRE 2hr Overshadowing Assessment – March 21st

1 Golden Lane



Existing AOD's

1 Golden Lane

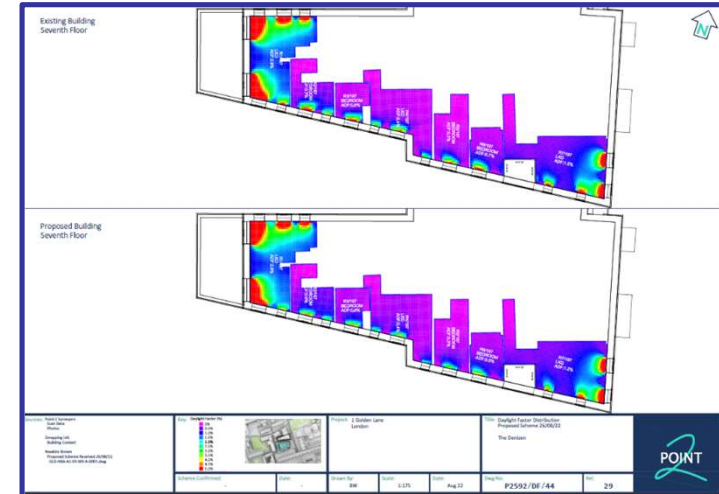
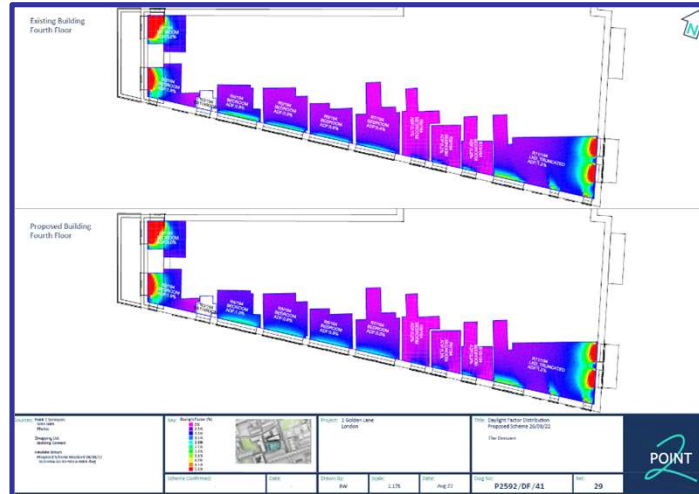
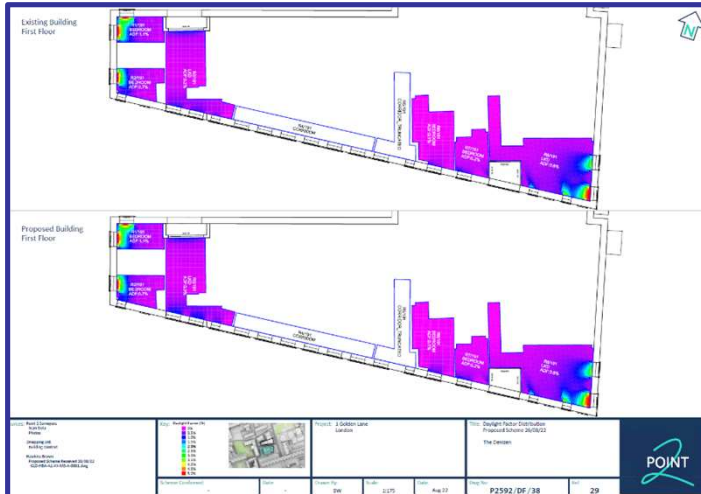


Proposed AOD's

1 Golden Lane



Figure 06: The Denizen – Proportional changes in VSC



BRE Assessment – The Denizen

1 Golden Lane



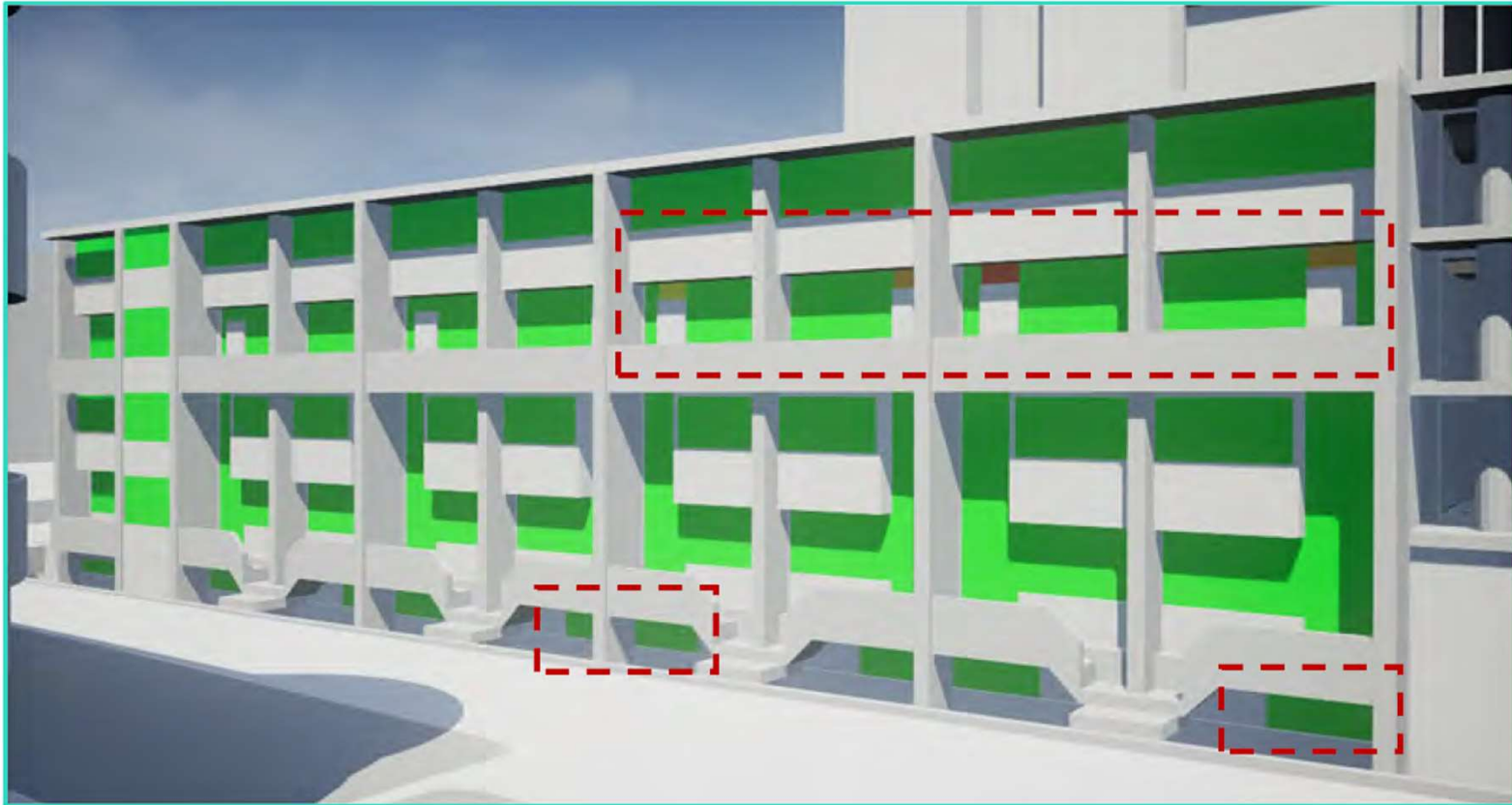
Bowater House - Proportional changes in VSC

1 Golden Lane



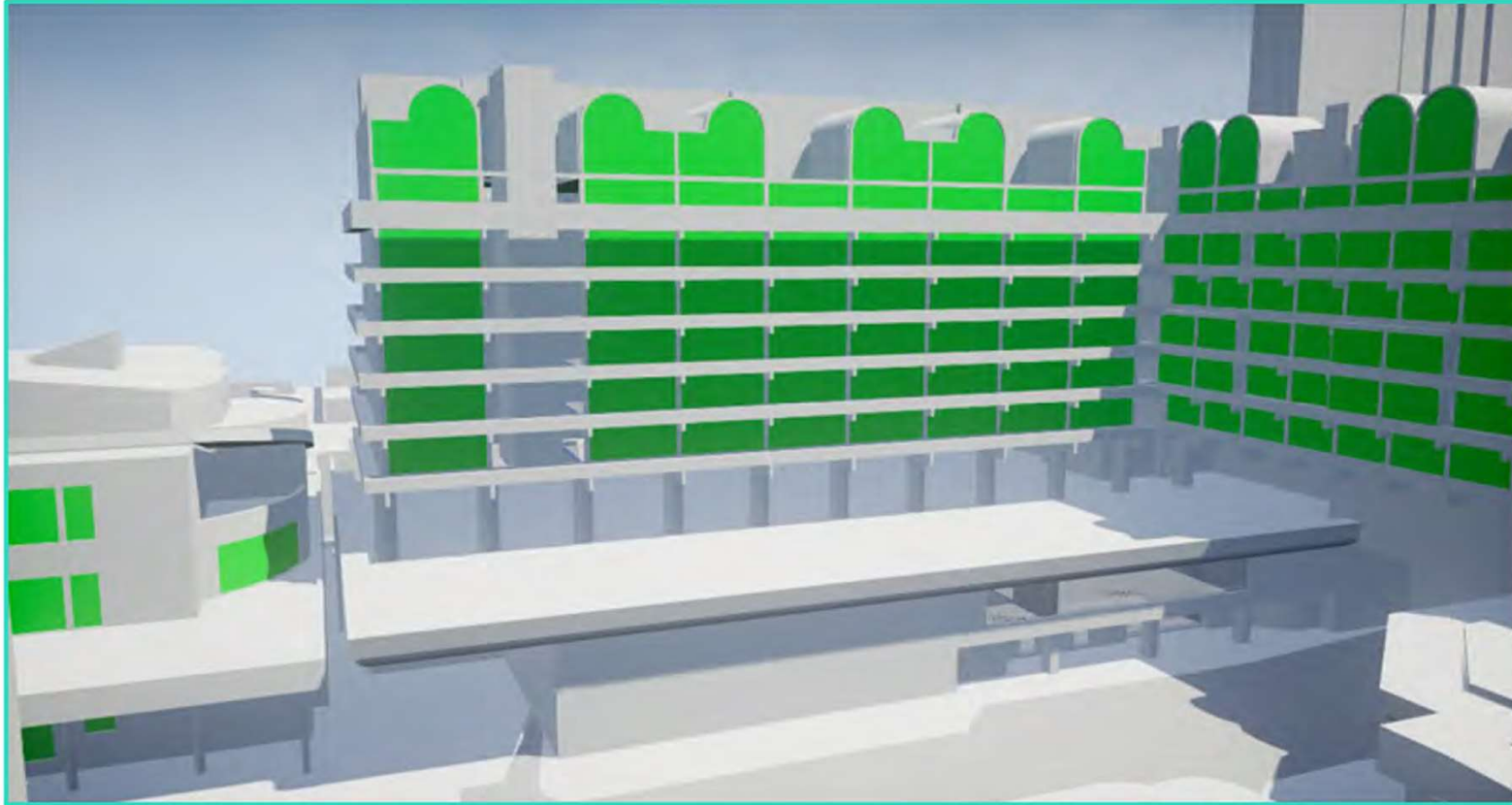
The Cobalt Building - Proportional changes in VSC

1 Golden Lane



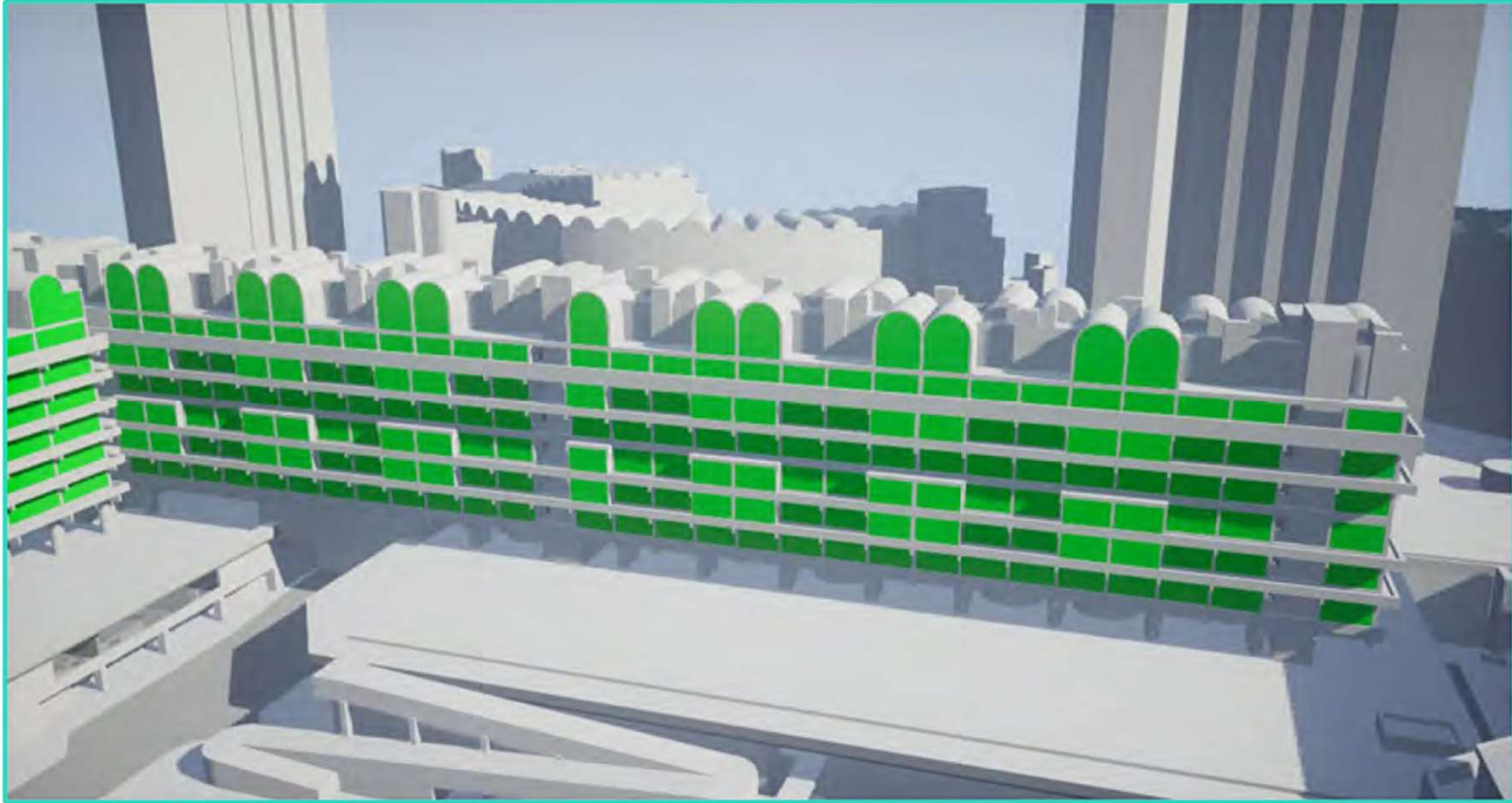
Cuthbert Harrowing House - Proportional changes in VSC

1 Golden Lane



Breton House - Proportional changes in VSC

1 Golden Lane



Ben Jonson House – Proportional changes in VSC



CITY
OF
LONDON