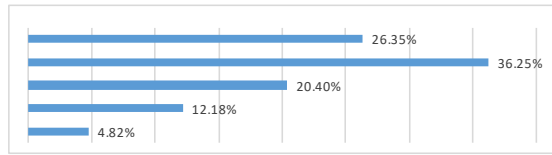


## Barbican Employee Overview @ Feb 23

NB: where categories are lower than 3% of employees they have been grouped to avoid the possibility of identifying individuals

### Age

Category	Barbican
21-30	26.35%
31-40	36.25%
41-50	20.40%
51-60	12.18%
61+	4.82%



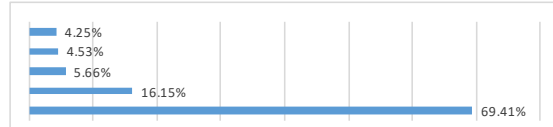
### Disability

Category	Barbican
No	72.80%
Not disclosed	20.40%
Yes	6.80%



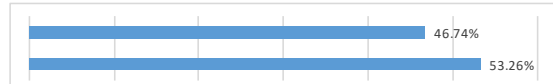
### Ethnic Group

Category	Barbican
Asian or Asian British	4.25%
Black or Black British	4.53%
Mixed or Other	5.66%
Not disclosed	16.15%
White	69.41%



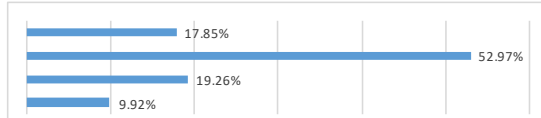
### Gender

Category	Barbican
Female	53.26%
Male	46.74%



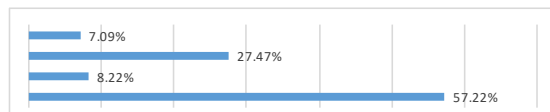
### Religion

Category	Barbican
Christian	17.85%
None / No religion	52.97%
Not disclosed	19.26%
Buddhist, Hindu, Jewish, Muslim, Sikh, Spiritual, Other	9.92%



### Sexual Orientation

Category	Barbican
Bisexual, Pansexual, Queer	7.09%
Not disclosed	27.47%
Gay, Lesbian	8.22%
Heterosexual	57.22%

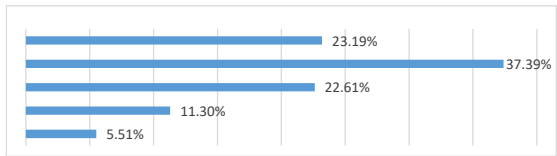


## Barbican Employee Overview @ Sept 22

NB: where categories are lower than 3% of employees they have been grouped to avoid the possibility of identifying individuals

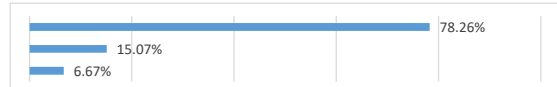
### Age

Category	Barbican
21-30	23.19%
31-40	37.39%
41-50	22.61%
51-60	11.30%
61+	5.51%



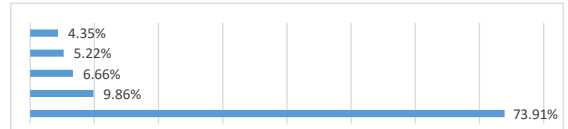
### Disability

Category	Barbican
No	78.26%
Not disclosed	15.07%
Yes	6.67%



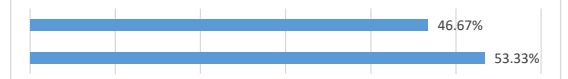
### Ethnic Group

Category	Barbican
Asian or Asian British	4.35%
Black or Black British	5.22%
Mixed or Other	6.66%
Not disclosed	9.86%
White	73.91%



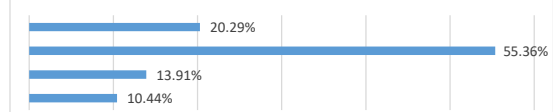
### Gender

Category	Barbican
Female	53.33%
Male	46.67%



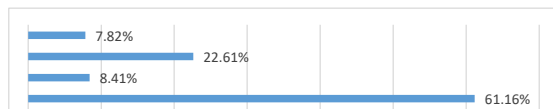
### Religion

Category	Barbican
Christian	20.29%
None / No religion	55.36%
Not disclosed	13.91%
Buddhist, Hindu, Jewish, Muslim, Sikh, Spiritual, Other	10.44%



### Sexual Orientation

Category	Barbican
Bisexual, Pansexual, Queer	7.82%
Not disclosed	22.61%
Gay, Lesbian	8.41%
Heterosexual	61.16%

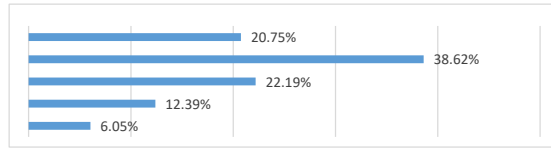


## Barbican Employee Overview @ June 22

NB: where categories are lower than 3% of employees they have been grouped to avoid the possibility of identifying individuals

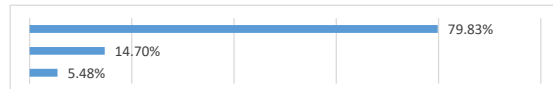
### Age

Category	Barbican
21-30	20.75%
31-40	38.62%
41-50	22.19%
51-60	12.39%
61+	6.05%



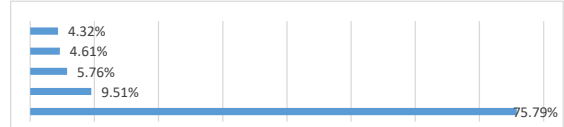
### Disability

Category	Barbican
No	79.83%
Not disclosed	14.70%
Yes	5.48%



### Ethnic Group

Category	Barbican
Asian or Asian British	4.32%
Black or Black British	4.61%
Mixed or Other	5.76%
Not disclosed	9.51%
White	75.79%



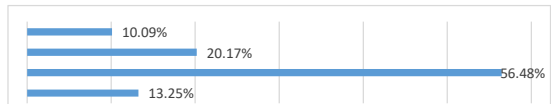
### Gender

Category	Barbican
Female	53.31%
Male	46.69%



### Religion

Category	Barbican
Buddhist, Hindu, Jewish, Muslim, Sikh, Spiritual, Other	10.09%
Christian	20.17%
None / No religion	56.48%
Not disclosed	13.25%



### Sexual Orientation

Category	Barbican
Bisexual	6.92%
Gay or Lesbian	7.78%
Heterosexual	63.11%
Not disclosed	22.19%

