

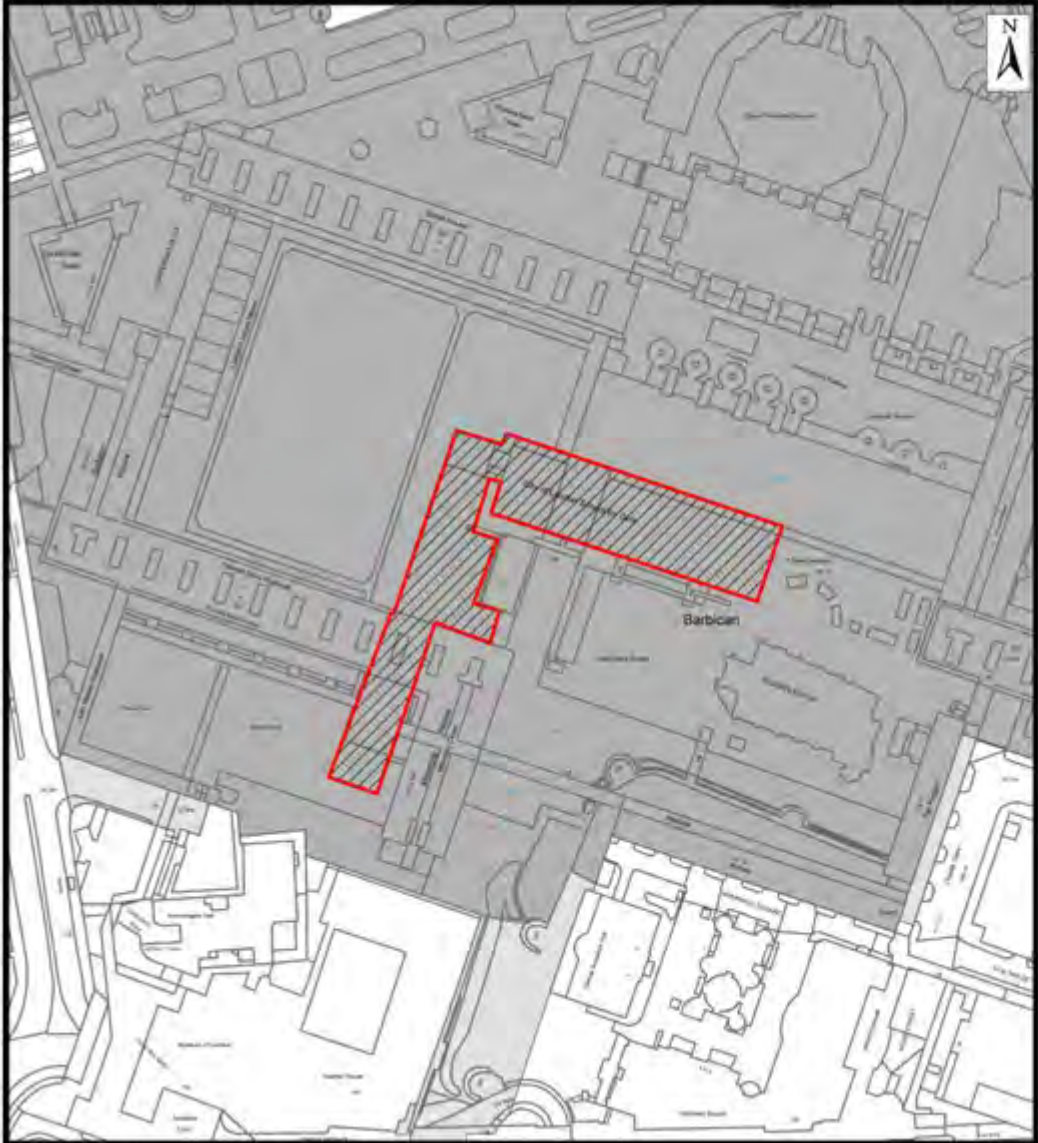


City of London School for Girls



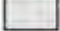
Planning Applications Sub-Committee

10th September

Site Location Plan

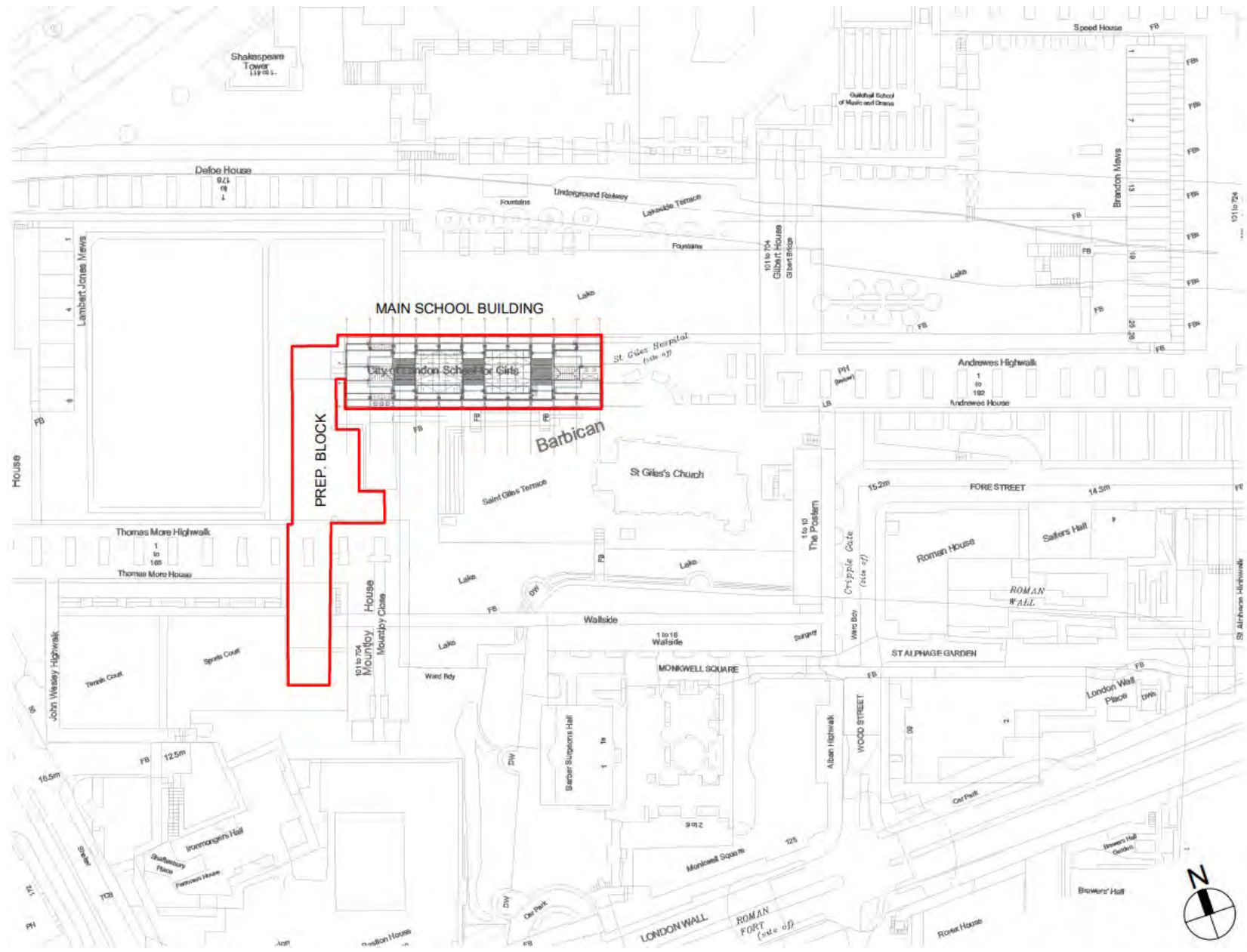


ADDRESS:
City of London School for Girls
St Giles' Terrace, Barbican

-  SITE LOCATION
-  LISTED BUILDINGS
-  CONSERVATION AREA BOUNDARY



Aerial view of the site



Site Plan



Fig 5: Key Plan showing location of photograph vistas



Fig 1: View a of South and East Elevations, looking North West towards Defoe House



Fig 2: View b of East Elevation, looking South West towards Thomas Moore House

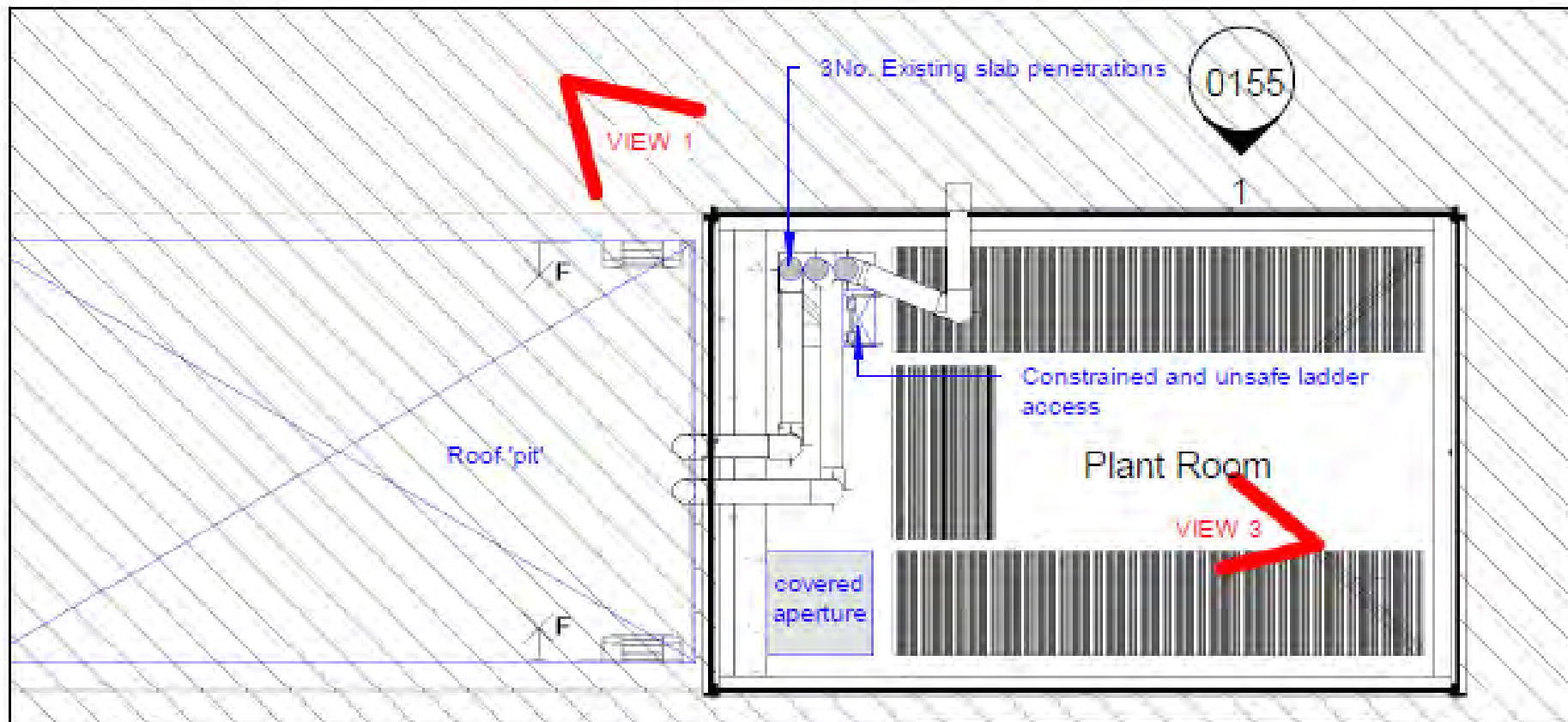


Fig 3: View c of North Elevation, looking South West towards Thomas Moore House

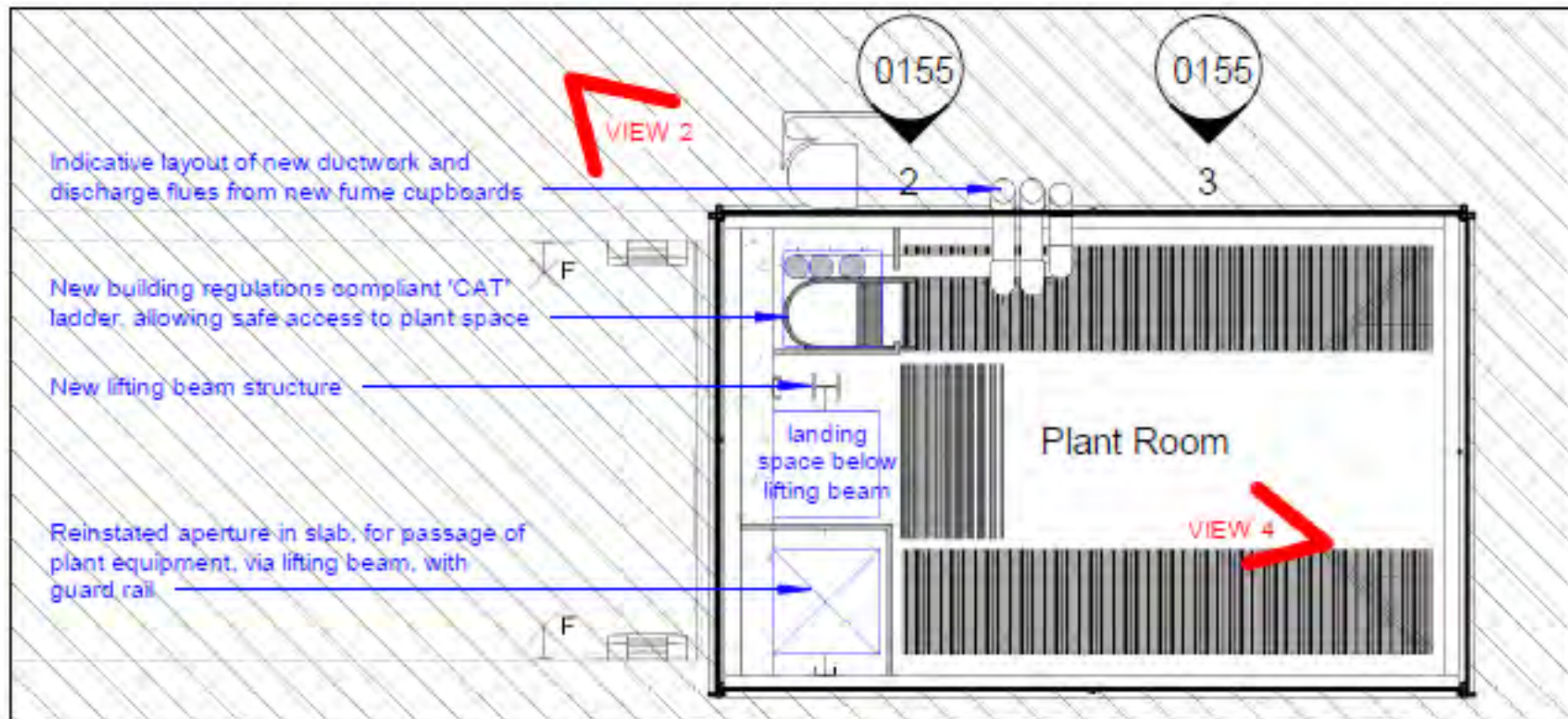


Fig 4: View d of North and West Elevations, looking South East towards Wallside

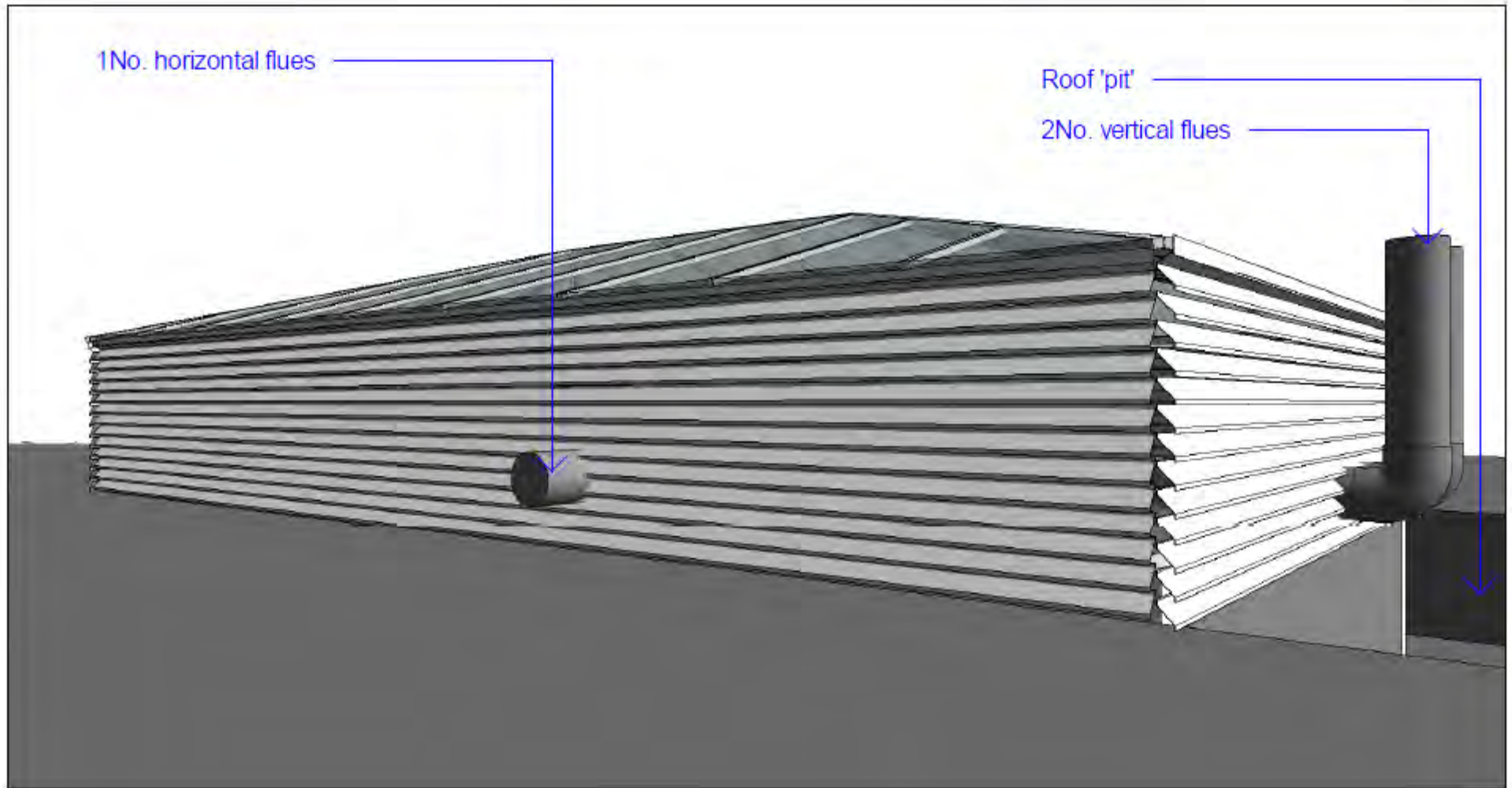
Previous Condition - Roof



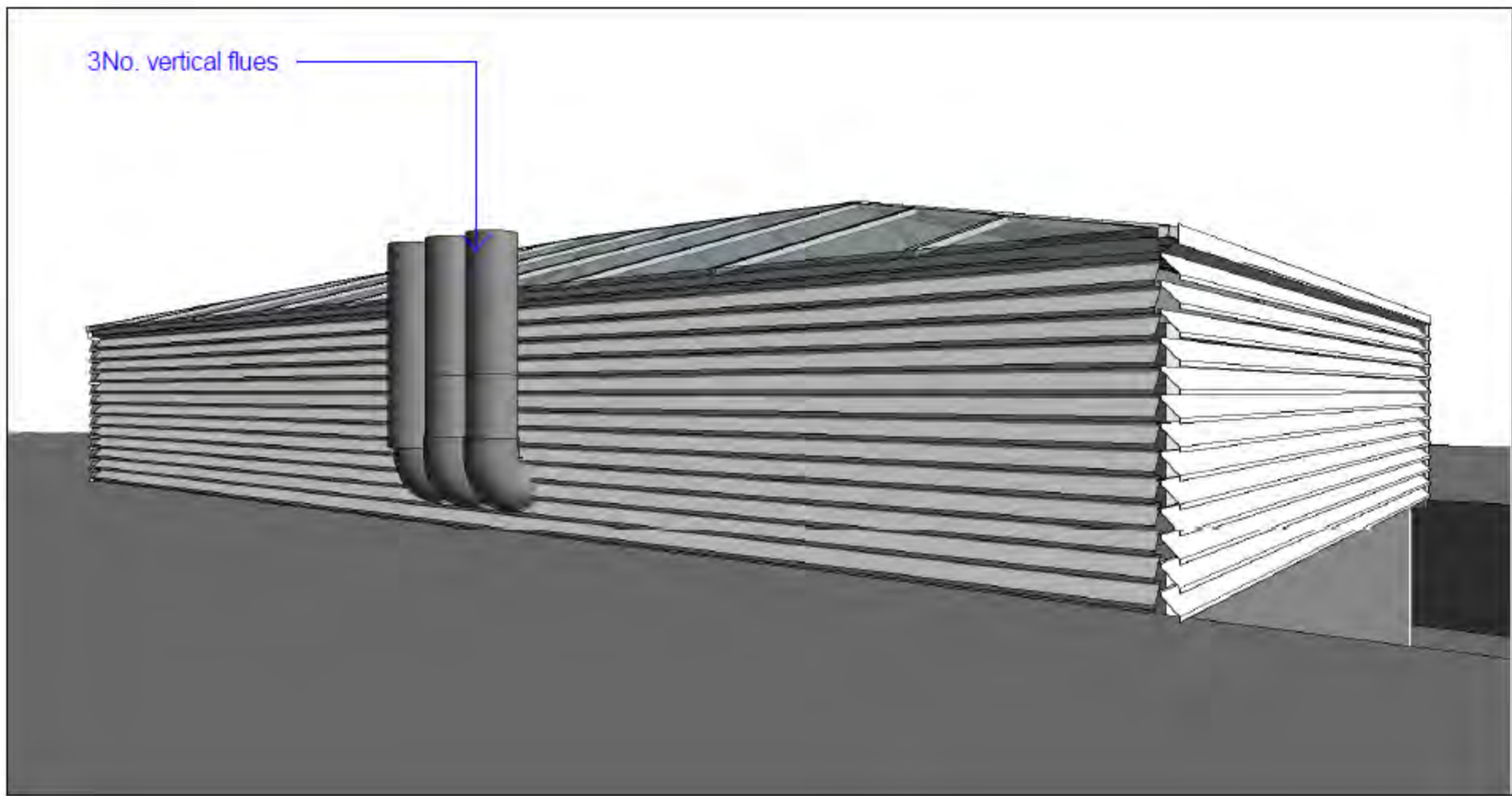
Plant Room Plan - Constraints



Plant Room Plan – Introduction of Building Regulations Compliant Access



CGI – External View of Previous Plant Room Elevation (South Eastern View)



CGI – External View of Existing Plant Room Elevation (South Eastern View)



View from Defoe House (Figure A – Design Statement, Public Vistas and Visual Context)



View from Seddon House (Figure B)



View from Thomas More House (Figure C)



View from Barbican Arts Centre, Stairwell (Figure D)



View from Barbican Arts Centre, Highwalk (Figure E)



View from Wallside (Figure F)

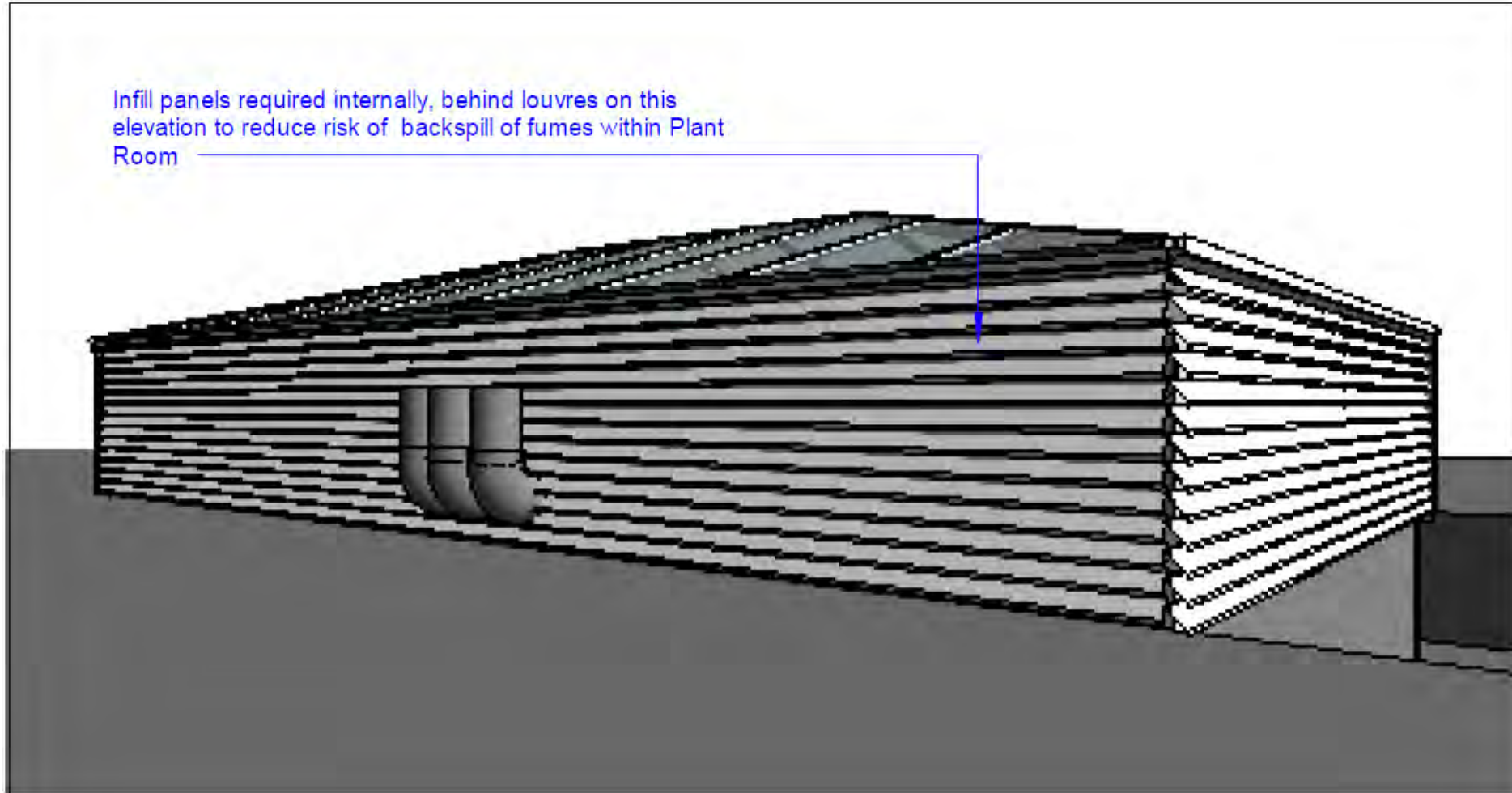


View from Wallside (Figure G)

Proposed reduction in height of flues, down to approx. 700mm above roof level



Proposed Reduction in Height – North Elevation Photograph



Proposed Reduction in Height – North Elevation CGI

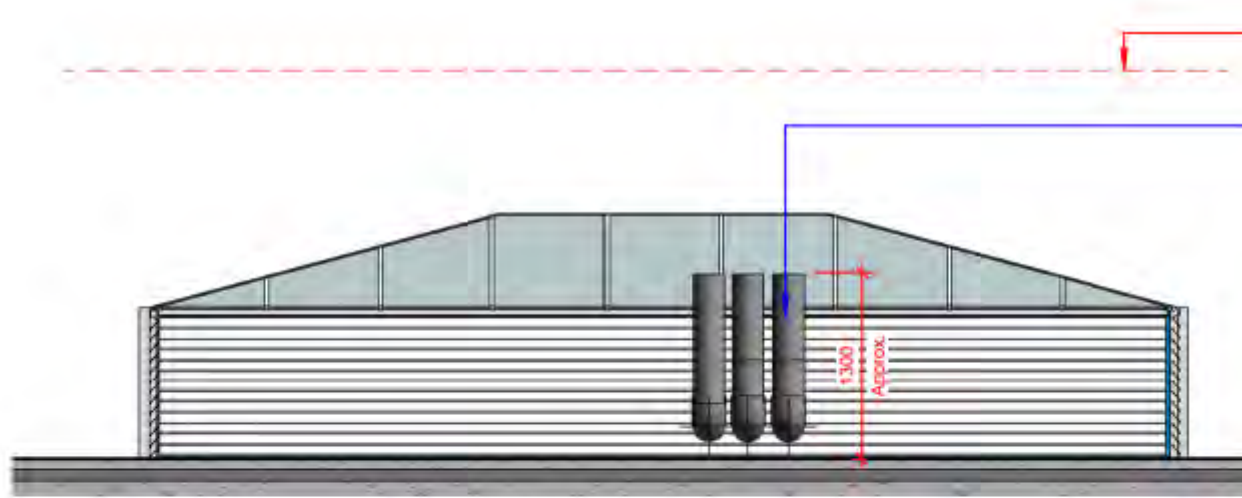


Fig 21: Roof Enclosure, North Elevation - Current Situation

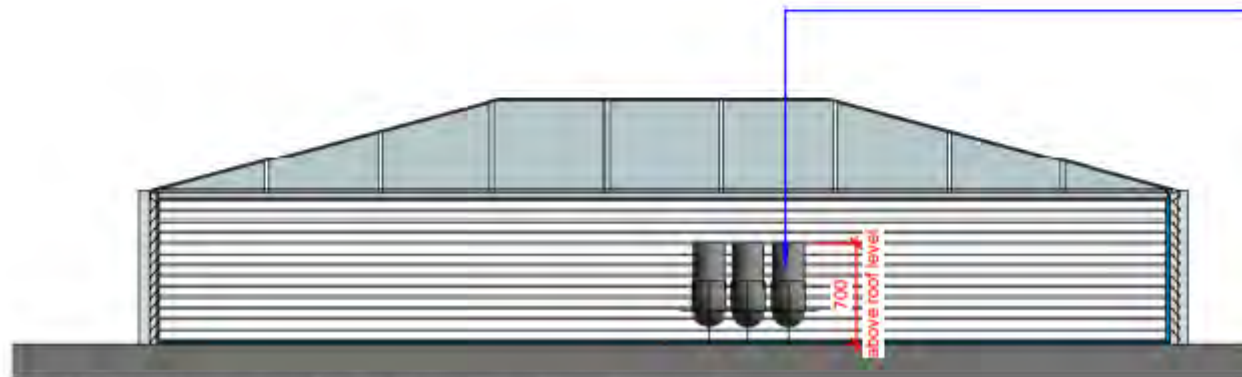


Fig 22: Roof Enclosure, North Elevation - New Proposal

Existing and Proposed – North Elevation



CITY
OF
LONDON
