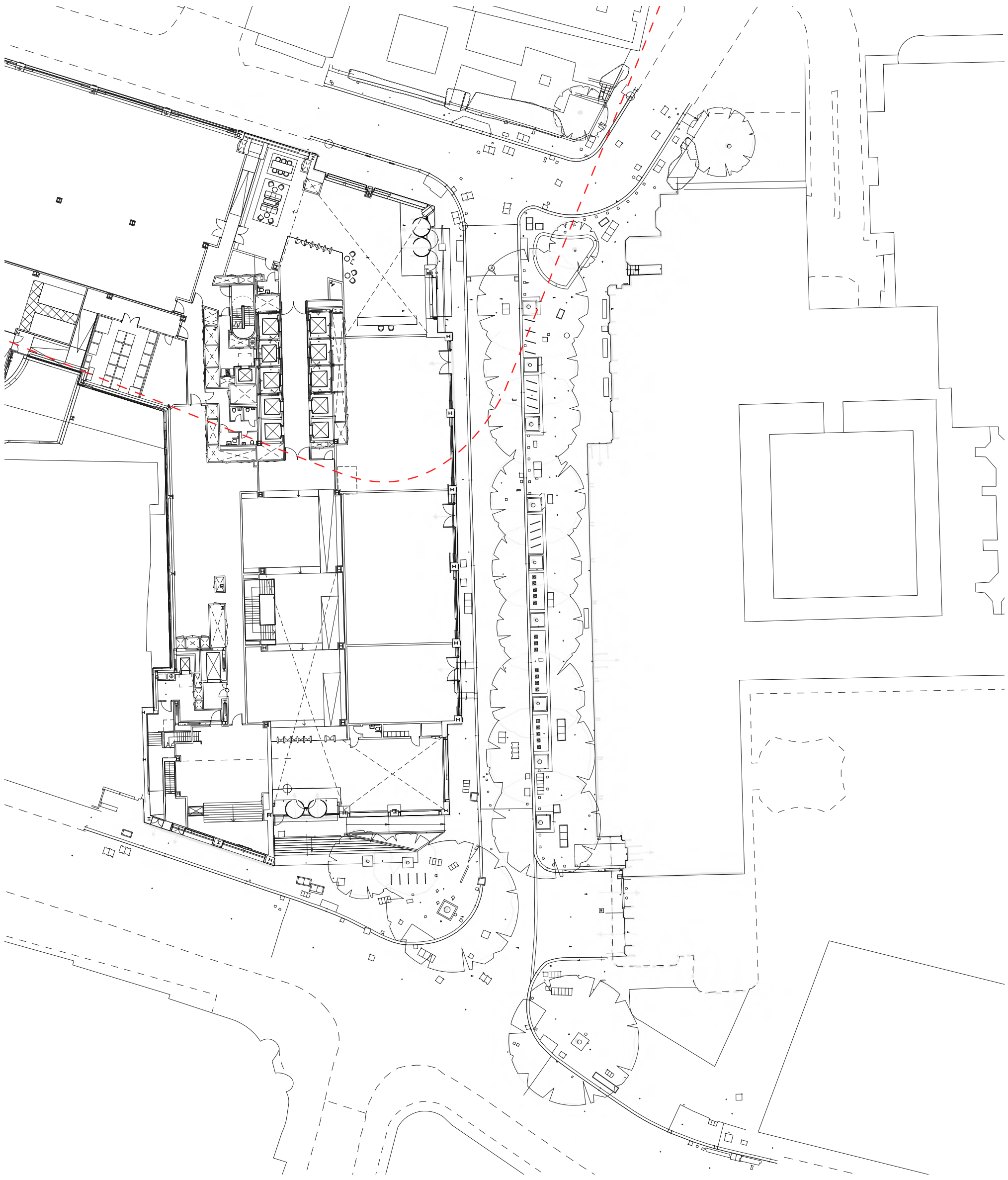


Aldermanbury

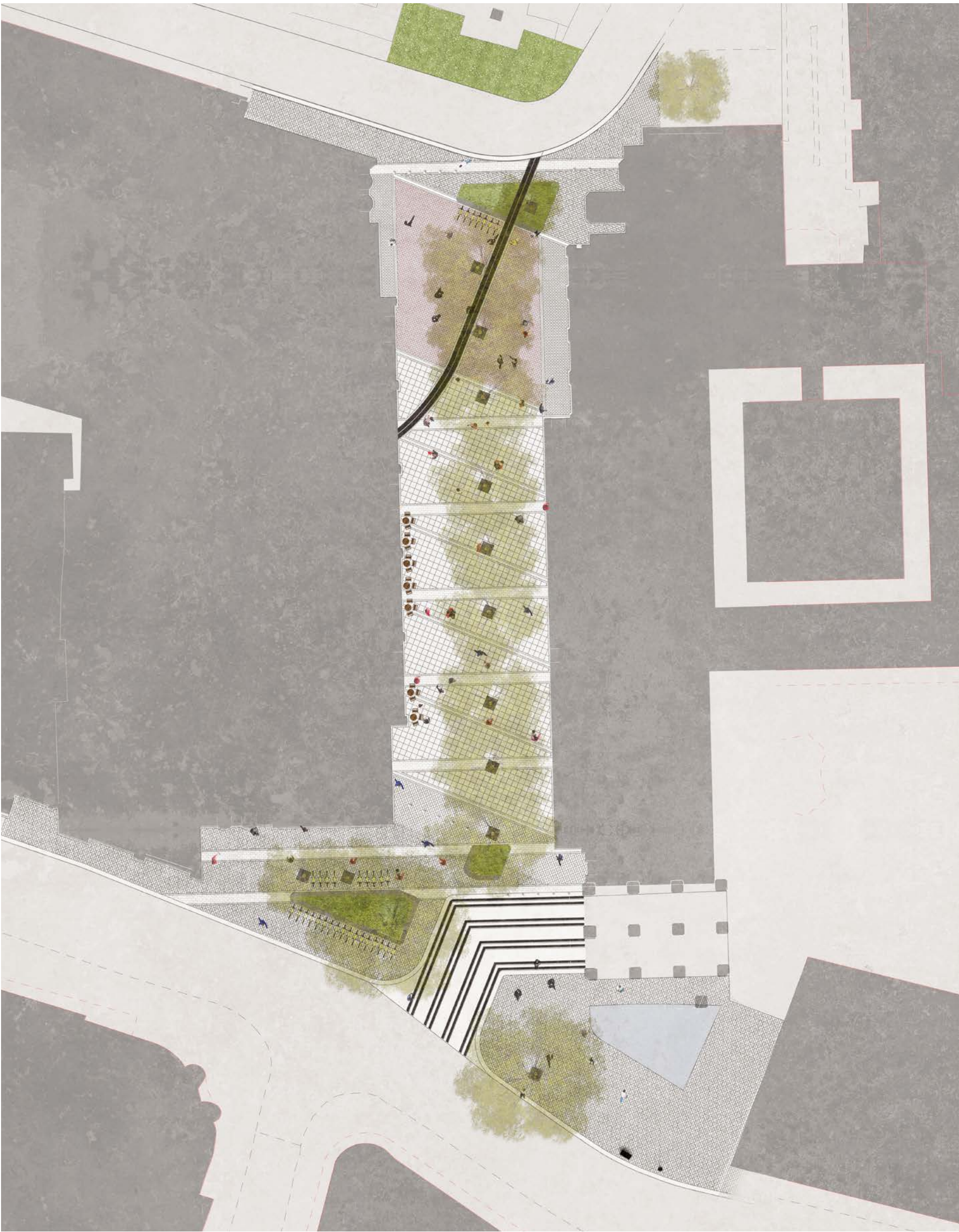
65 Gresham Street S.278 project

Overlay - Location of Roman Wall



Option 1 - recommended

Full Pedestrianisation



Option 01 - Visual 1

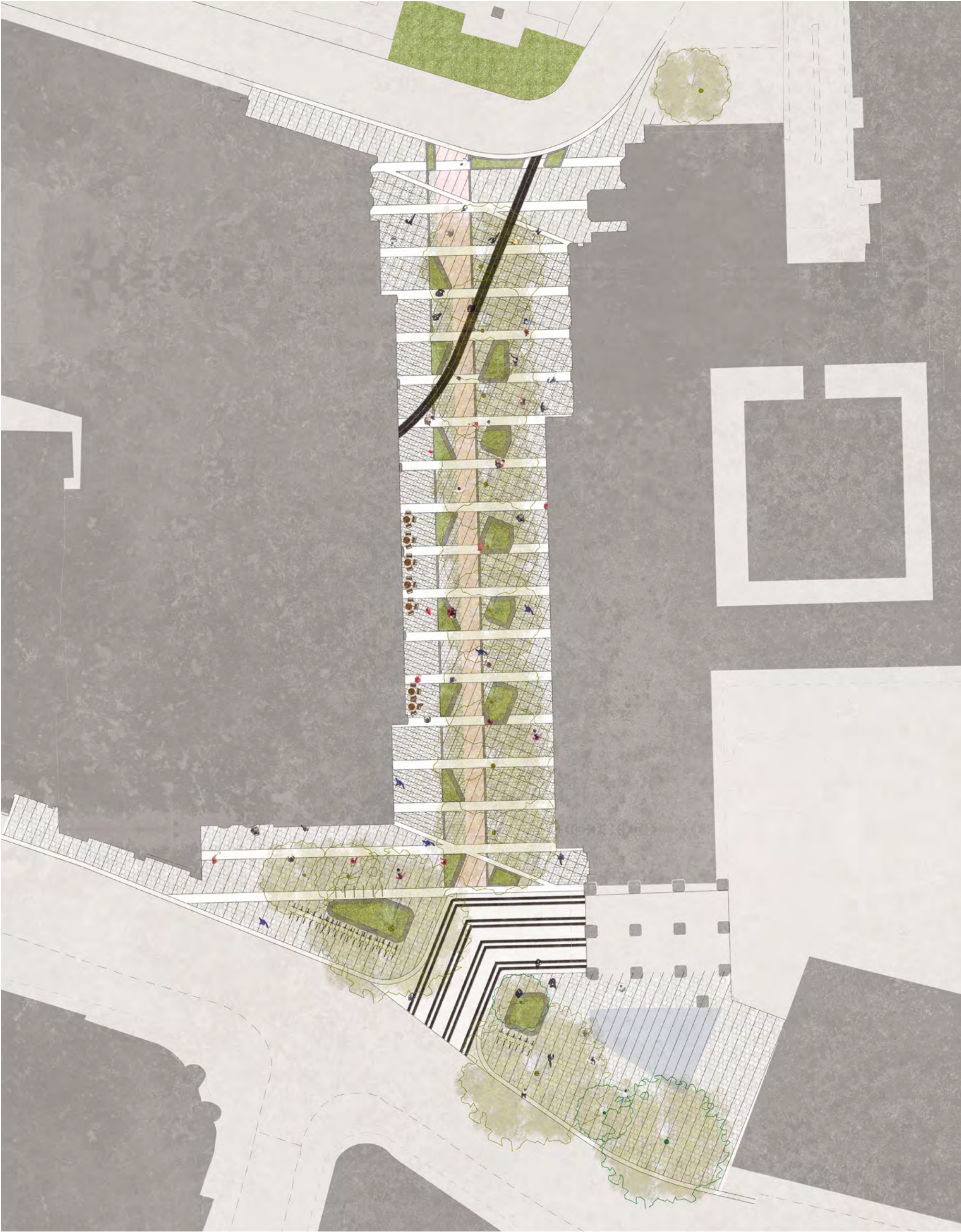


Option - Visual 2



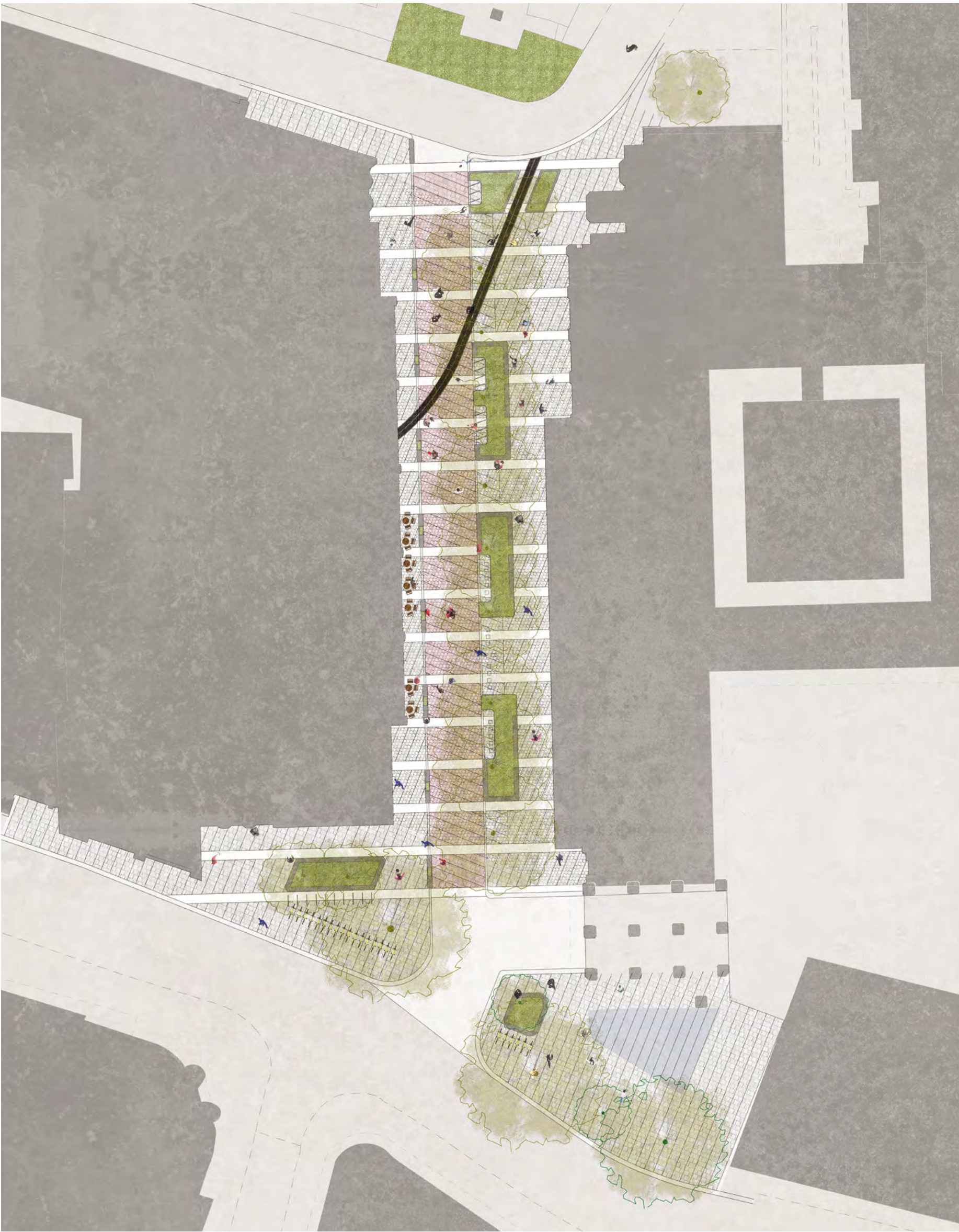
Option 2 - not recommended

(Full Pedestrianisation with Two-Way Cycle Path)



Option 3 - not recommended

(Pedestrian Priority Measures - raised carriageway & timed closure to vehicles)



Option 4 - recommended

(Retention of Existing Street Function - Improved Footways)

