



Building Safety Inspection

Dron House Block C / 14 Apr 2025

Complete

Score	33 / 39 (84.62%)	Flagged items	0	Actions	0
Site conducted	Dron House Block C, Tower Hamlets, Dron House				
Date of Inspection	14.04.2025 14:51 BST				
Conducted by	Gavin Orr				
Location	Dron House, Adelina Grove London England E1 3AB United Kingdom (51.519252787387536, -0.055027332807280345)				

Table of Contents

Property Information Boxes - 4 / 4 (100%)	3
Door Entries - 4 / 5 (80%)	4
Fire alarm panel	5
Signage	6
Lobbies - 4 / 5 (80%)	7
Lifts	8
Landings, Balconies & Corridors - 4 / 5 (80%)	9
Fire Doors	10
Heat/Smoke detectors	11
Smoke ventilation system	12
Sprinklers	13
Chutes	14
Wet/Dry Risers	15
Stairwells - 4 / 5 (80%)	16
Windows - 5 / 5 (100%)	17
Roof Areas (Communal access only) - 4 / 5 (80%)	18
Basement Areas (Communal access only)	19
Bin Chambers - 4 / 5 (80%)	20
Lighting	21
Notes	22
Sign off	23
Media summary	24

Does the block have a property information box?

Yes



Photo 1

Is the PIB secure?



Is there a site map/s?



Is there an evacuation procedure/Fire safety policy?



Is there a vulnerable persons listing?



Is the door entry system in working order and secure?

Yes



Photo 2

Rate the cleaning standard of the door entry

B



Photo 3

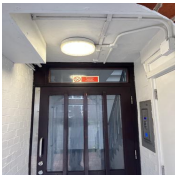


Photo 4



Photo 5

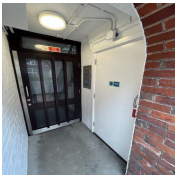


Photo 6

Fire alarm panel

Is the fire alarm panel showing any faults?

N/A

Signage

Is all signage in place and in good condition?

Yes

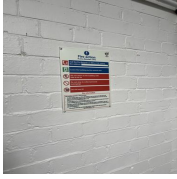


Photo 7



Photo 8



Photo 9



Photo 10

Signage should be in place and good condition for instruction is clearly visible.

Rate the cleaning standard of the Lobby

B

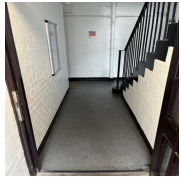


Photo 11

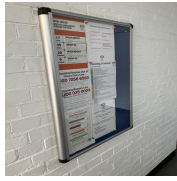


Photo 12

Lifts

Is the lift/s? in working order?

N/A

Are there landings, balconies and/or corridors clear of obstruction?

Yes

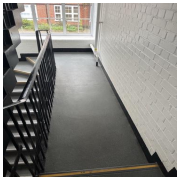


Photo 13

Areas should be free of hazard and obstruction with 900mm minimum clearance for escape routes.

Rate the cleaning standard of the Landings, Balconies & Corridors

B

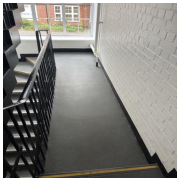


Photo 14

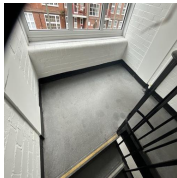


Photo 15

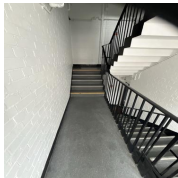


Photo 16

Fire Doors

Are all communal/fire doors in good working order?

Yes

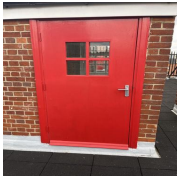


Photo 17

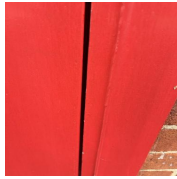


Photo 18



Photo 19

Communal doors should be in good condition and close completely flush with no gaps or obstructions.

Heat/Smoke detectors

Is there any visible damage to heat/smoke detectors?

N/A

Smoke ventilation system

Is there any visible damage to the smoke ventilation system?

N/A

Sprinklers

Is there any visible damage to the sprinklers?

N/A

Chutes

Are the chute hoppers in good condition?

N/A

Wet/Dry Risers

Are the Wet or Dry Risers secure and in good condition?

N/A

Is the stairwell in safe condition?

Yes

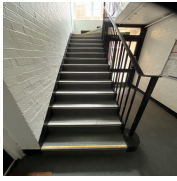


Photo 20

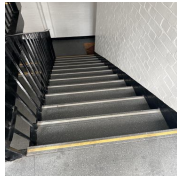


Photo 21

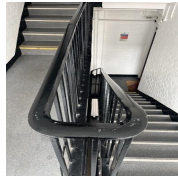


Photo 22

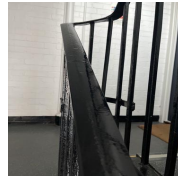


Photo 23

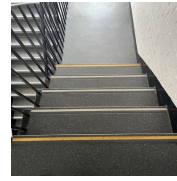


Photo 24

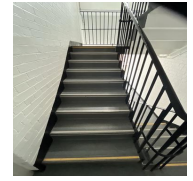


Photo 25

Areas should be free of hazard and obstruction for escape routes.

Rate the cleaning standard of the starwells

B

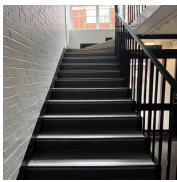


Photo 26

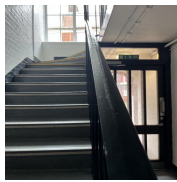


Photo 27

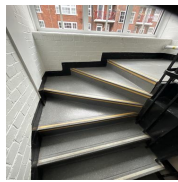


Photo 28

Are windows in safe working condition?

Yes



Photo 29

Windows should be in working order, free of damage and have any restrictors in place where applicable.



Rate the cleaning standard of the windows

A



Photo 30

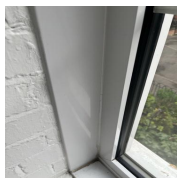


Photo 31



Photo 32

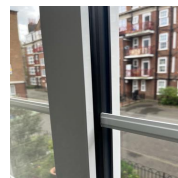


Photo 33

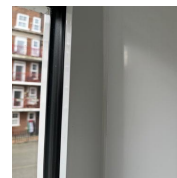


Photo 34



Photo 35

Is the roof area free of obstruction or hazard?

Yes

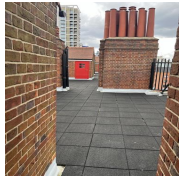


Photo 36

Areas should be free of hazard and obstruction with 900mm minimum clearance for escape routes.

Rate the cleaning standard of the accessible roof area

B

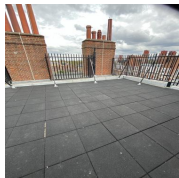


Photo 37

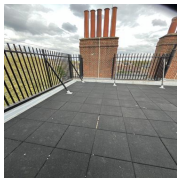


Photo 38

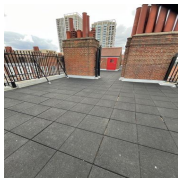


Photo 39

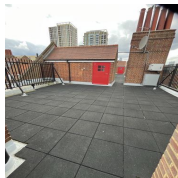


Photo 40

Basement Areas (Communal access only)

Is the basement area free of obstruction or hazard?

N/A

Are the bin chambers clear and free of hazard?

Yes

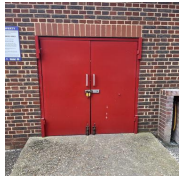


Photo 41

Rate the cleaning standard of the bin chambers

B



Photo 42

Lighting

Is all lighting in working order?

Yes

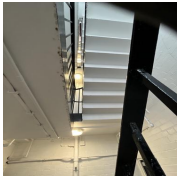


Photo 43

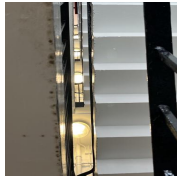


Photo 44

Has a flick test been carried out?

Yes

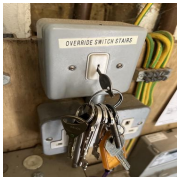


Photo 45

Override should be tested and emergency lighting checked where applicable.



Notes

Provide any additional notes here.

Clean, safe & tiny

Sign off

Signature

A handwritten signature in black ink, appearing to be 'S. Q.', is displayed on a light gray background.

14.04.2025 15:55 BST

Media summary



Photo 1



Photo 2



Photo 3



Photo 4



Photo 5

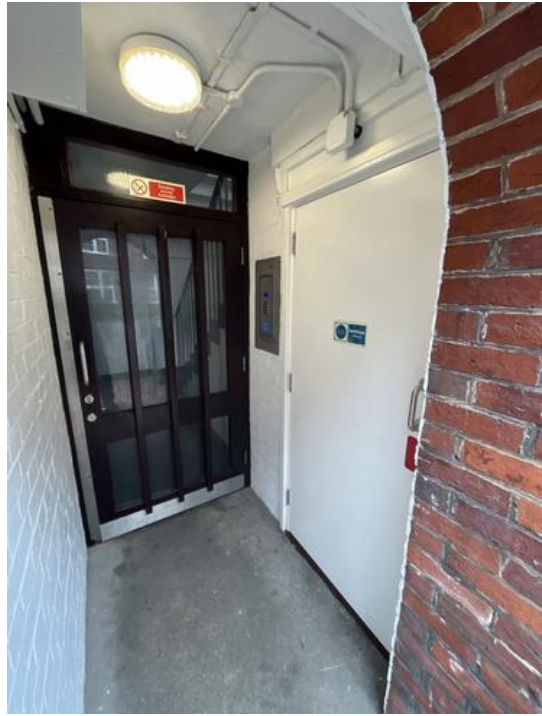


Photo 6



Photo 7



Photo 8



Photo 9



Photo 10

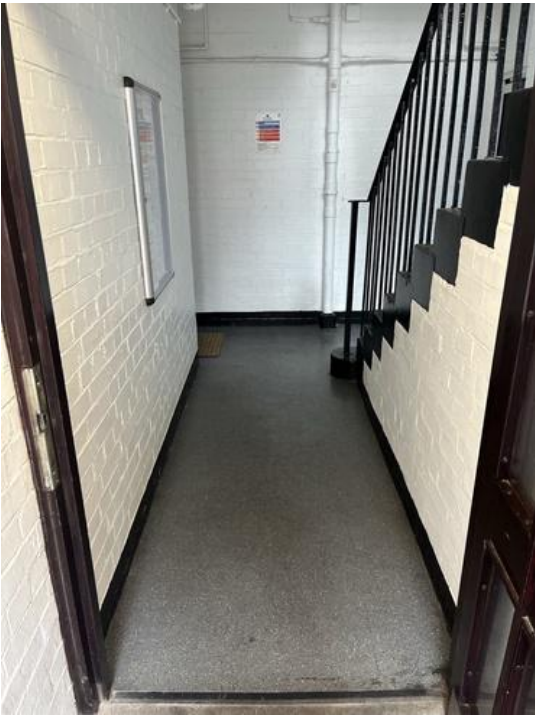


Photo 11



Photo 12

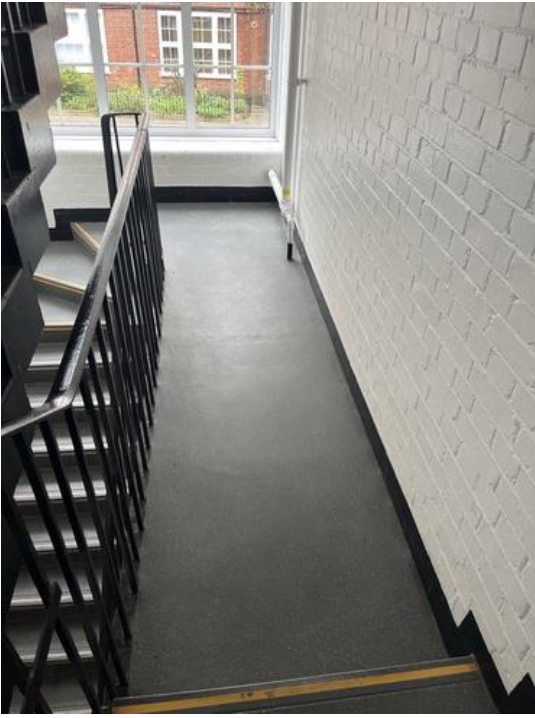


Photo 13

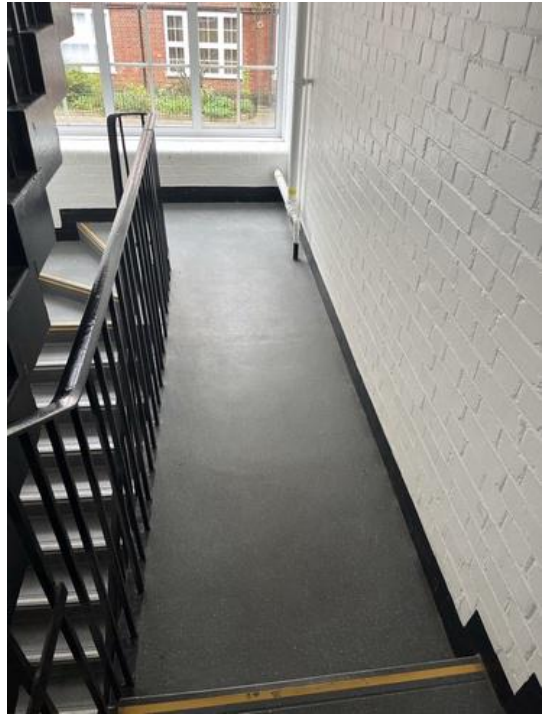


Photo 14



Photo 15

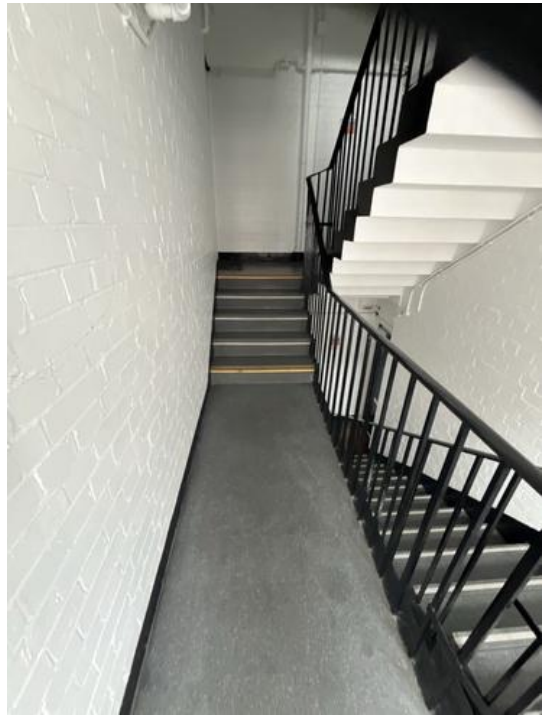


Photo 16



Photo 17



Photo 18



Photo 19

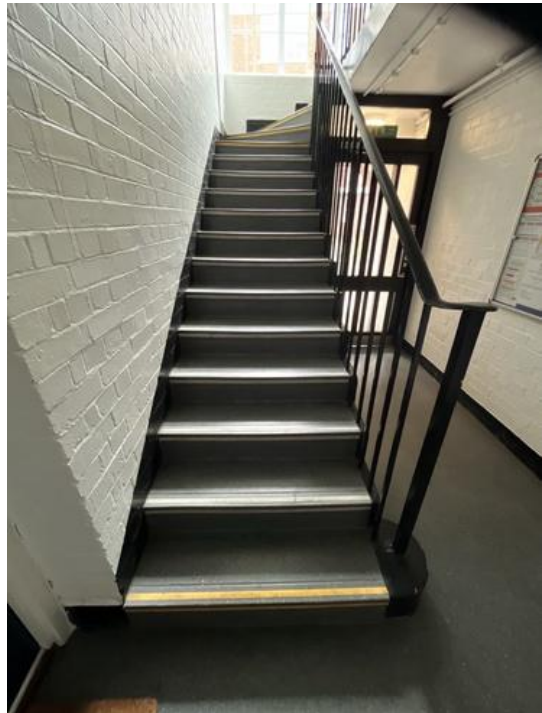


Photo 20



Photo 21

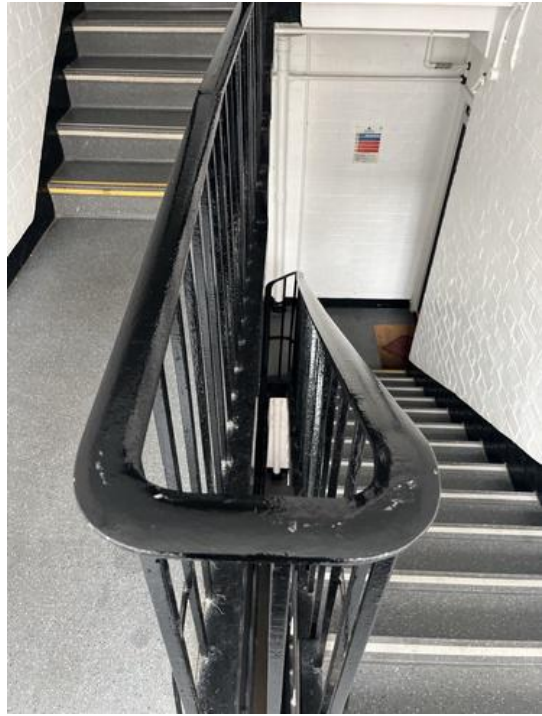


Photo 22



Photo 23

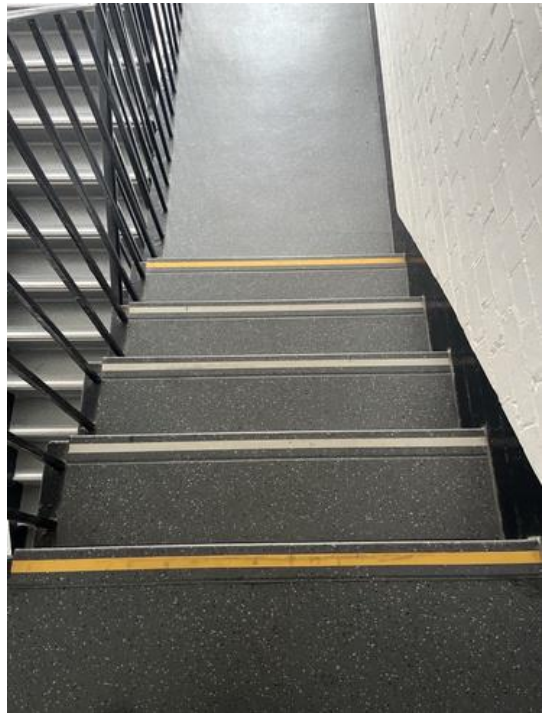


Photo 24



Photo 25

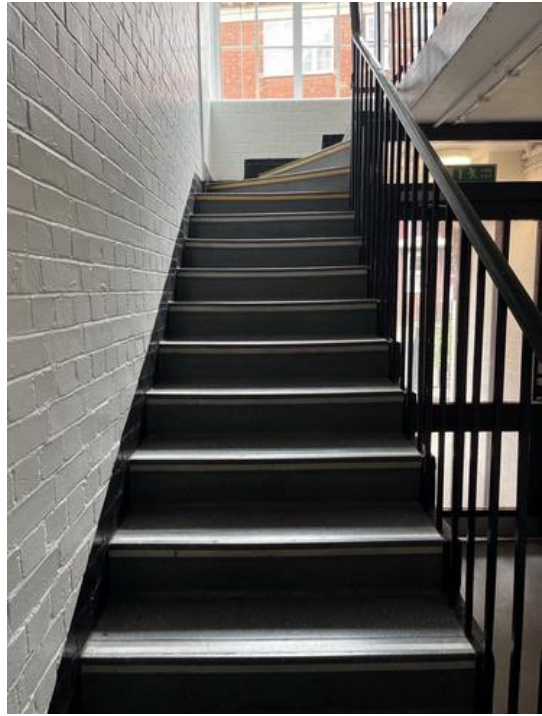


Photo 26



Photo 27



Photo 28



Photo 29



Photo 30



Photo 31



Photo 32



Photo 33



Photo 34



Photo 35

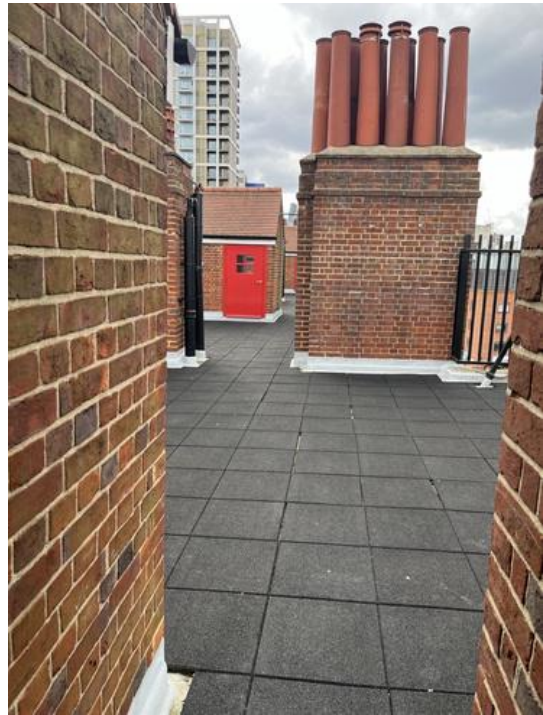


Photo 36



Photo 37

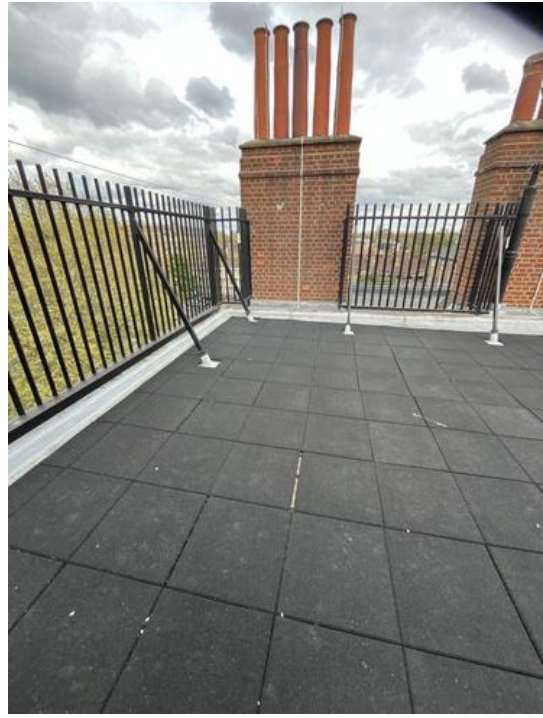


Photo 38

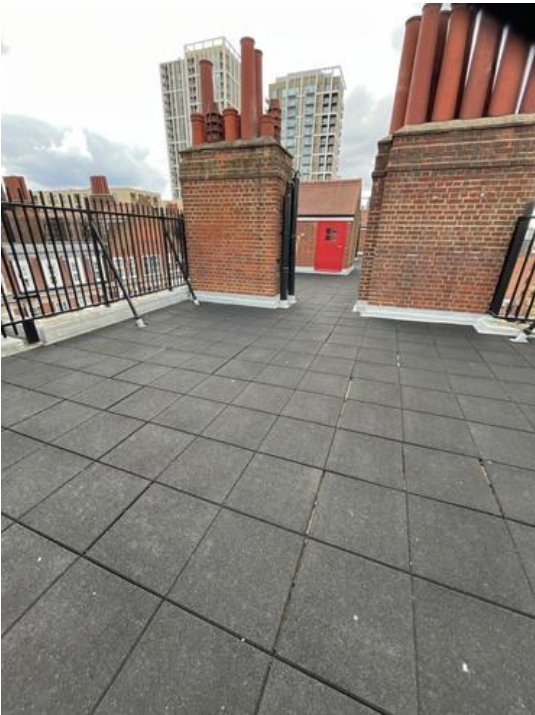


Photo 39

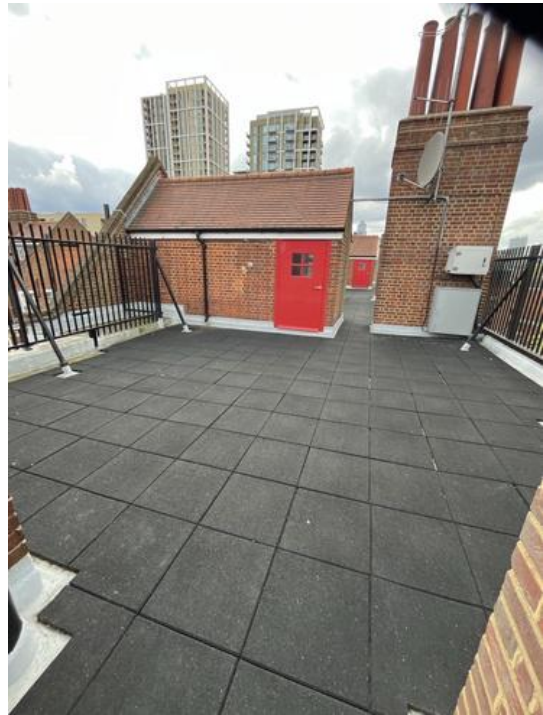


Photo 40



Photo 41



Photo 42

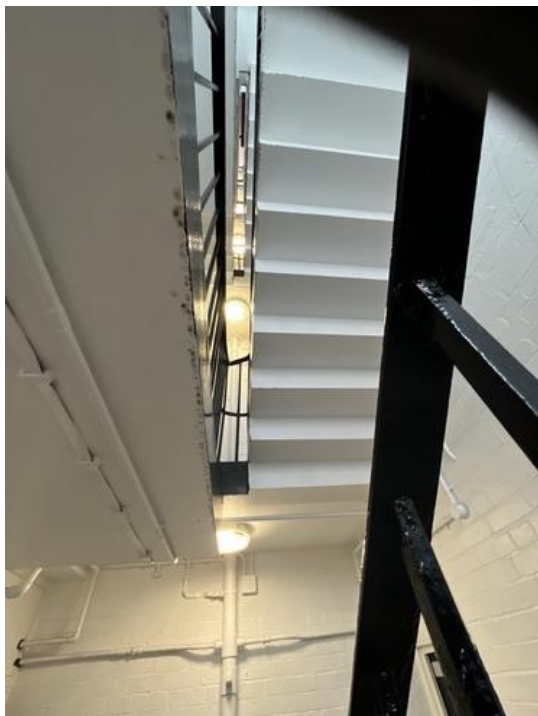


Photo 43



Photo 44



Photo 45