



Live Work Learn Explore

Crime & Disorder Scrutiny Committee – Safer City Partnership Update

6th November 2025



Contents

- Priority 1: Serious Violence
- Priority 2: Violence against Women and Girls
- Priority 3: Acquisitive Crime
- Priority 4: Safer Public Spaces
- Prevent



Live, Work, Learn, Explore



Priority 1: Serious Violence

Live, Work, Learn, Explore



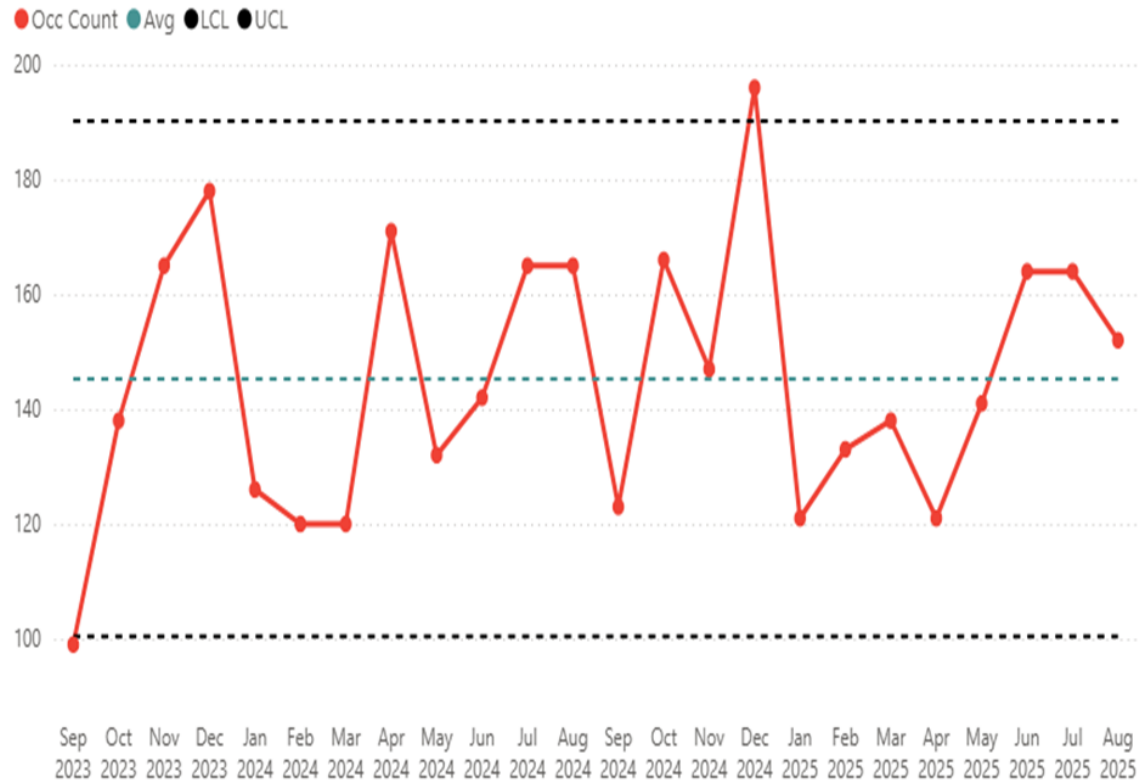
Serious Violence – Delivery of 2025 Strategy

	Measure	RAG rating*	Latest (Sept 2025)
Enabling	Explore options to improve the regular sharing of ambulance callout and hospital admissions data locally	GREEN	Some data now available via GLA Safestats, NHS confirm City must await national change to access others – gone as far as possible
Violence in NTE	Conduct a review of the uniformed presence in the City's night-time economy, incorporating evaluations of our 2024/25 hotspot response initiatives	AMBER	Ongoing within wider City Police neighbourhood policing review
	Commission updated research on the City's licensing landscape and review our multiagency licensing approach in light of its conclusions	RED	Option to do in-house appears unfeasible, Corporation looking at external commission
	Conduct specific analysis of lighting and CCTV coverage in violent crime hotspots, drawing on latest evidence from 2024/25 hotspot response initiatives and data, to inform a refresh of their strategic use as crime prevention tools	AMBER	Initial lighting analysis has been completed, now being refined
Sexual and domestic violence	Aim to fund a trial of the Circles programme to provide behavioural change interventions for sexual offenders and suspects	GREEN	Funded and being implemented
	Review the coverage of screening for domestic abuse in City healthcare settings, both to assess scope for improvement and to make sure that incidents are not being under-reported	GREEN	DA screening arrangements confirmed to be in place and links made to Corp DA referral pathways
Threats from changing City	Make a detailed assessment of potential threats and mitigations associated with increased footfall ambitions under the City of London Corporation's Destination City programme	AMBER	Meeting being arranged to compare & discuss Corp and CoLP footfall projections
	Deliver specific recommendations to the Destination City programme on how new pedestrianised routes can be designed to reduce violence	AMBER	Publica 'Right to the City' report recommendations reviewed, to be overlaid with lighting analysis (as above) + City Police input
	Conduct a brief risk and threat assessment of serious violence affecting homeless and rough-sleeper communities in the City	AMBER	Initial analysis has been completed but needs to progress further before group review

Live, Work, Learn, Explore



Serious Violence – Current overview



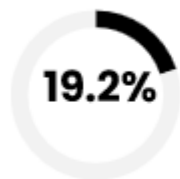
- The last update in June showed a 12 month rolling change at +14.5%, with the rate of increase remaining stable +14.1%. However, the last 8 months show less variability in volumes suggesting better control over levels of violence.
- Key months for serious violence continue to be December followed by November, with the Christmas campaign plans underway.
- Key times continue to be Thursday – Sunday in the night-time economy.
- A significant part of the increase is believed to be technical changes to the recording of robberies, not increase in underlying volume.



Live, Work, Learn, Explore

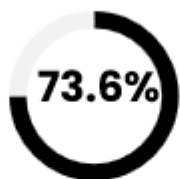
Serious Violence - In detail

POSITIVE OUTCOMES



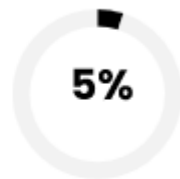
Positive outcomes for serious violence offences remain stable overall, particularly for violence against the person and robbery offences. Reducing rate for positive outcomes linked to sexual offending.

NIGHTTIME ECONOMY



There is a 1.4% decrease in the proportion of serious violence occurring in the nighttime economy (still reducing), but predominantly **this continues to be largest thematic linked to serious violence and should be where resources are focused**

ROUGH SLEEPING & BEGGING



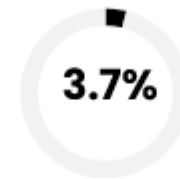
5% of SV is linked to homelessness, only 2 occurrences of begging linked to SV. This could be where the victim or the offender is identified as homeless. **National research shows a high % of the homeless population experience SV and its likely underreported**

SEXUAL VIOLENCE



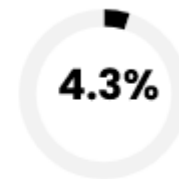
21% of SV is linked to sexual violence (-2% since June). 4% of sexual violence offences are domestic related, showing that the majority are non-domestic related (1% of overall SV). **62% of sexual offences are stranger related and 29% are acquaintances. Average of 14-15 occurrences a month.**

REPEAT VICTIMS



There are **34 repeat victims**, who have experienced **110 serious violence offences** (4%). Very low chance of being a repeat victim of serious violence. Majority of repeat victims are staff who work at business locations when identifying thefts/robbery's

OUTSTANDING SUSPECTS



Out of all suspects/offenders identified (492) there are **12 outstanding suspects** across 20 crimes (this has reduced from 22 outstanding suspects). 44 (9%) suspects/offenders are repeat offenders



Live, Work, Learn, Explore



Priority 2: VAWG

Violence against Women and Girls

Live, Work, Learn, Explore



VAWG

- Quarterly Delivery Group in place with new Terms of Reference, strategic implementation plan and action plan signed off.
- Commissioned DA intervention service 12-month trial under regular review.
 - 4 referrals leading to 4 interventions (April – June 2025).
- 16 Days of Activism – 25th November – 10th December 2025.
- Hotel Toolkit under review.



Live, Work, Learn, Explore

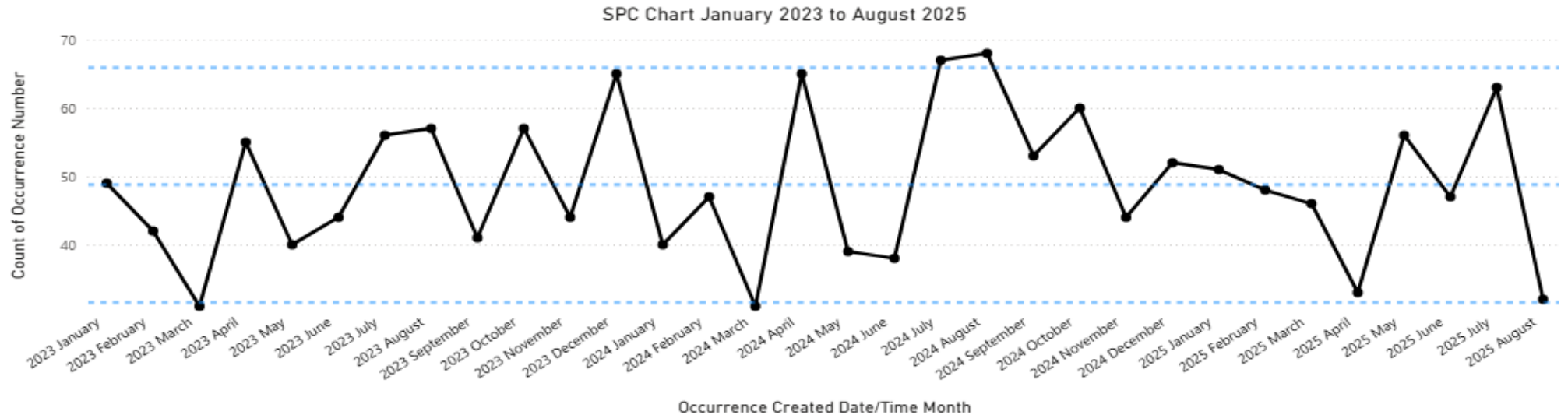


VAWG - Police statistics

55

Occurrences over the previous 4 weeks.

This is line with the average.



Looking Back

- Key Findings:
 - There was a 34% increase in VAWG incidents between June and July.
 - Bishopsgate remains the hotspot.
 - Wednesday is a peak day, compared to Friday last month.
 - Peak hours have changed from 00:00 and 18:00 hours to 23:00 hours.
 - No reports of Rape so far in August, compared to 1 in July.

Looking Forward

- The number of VAWG incidents have fluctuated, but overall incidents in the summer sit between the average and the UQ.
- A 2024 report from BTP has recorded a 10% increase in Sexual Offences on the railway since 2022. London Bridge recorded the second highest number of incidents, which sits on the City's border.
- The Government has announced a £20m funding boost to expand support for survivors of domestic violence. This increased level of support could lead to a decrease in the need for Police.

Live, Work, Learn, Explore

VAWG - Police hotspots

Six streets made up 25% of all VAWG incidents.

27 streets made up 50% of all VAWG incidents.

Old Bailey – Thursday 13:00 – 14:59 hours

New Change – Sunday 17:00 hours

Cheapside – Wednesday 14:00 – 16:59 hours

Poultry – Tuesday 20:00 – 22:59 hours
Thursday – No peak hours

Eastcheap – Friday 23:00 – 00:59 hours

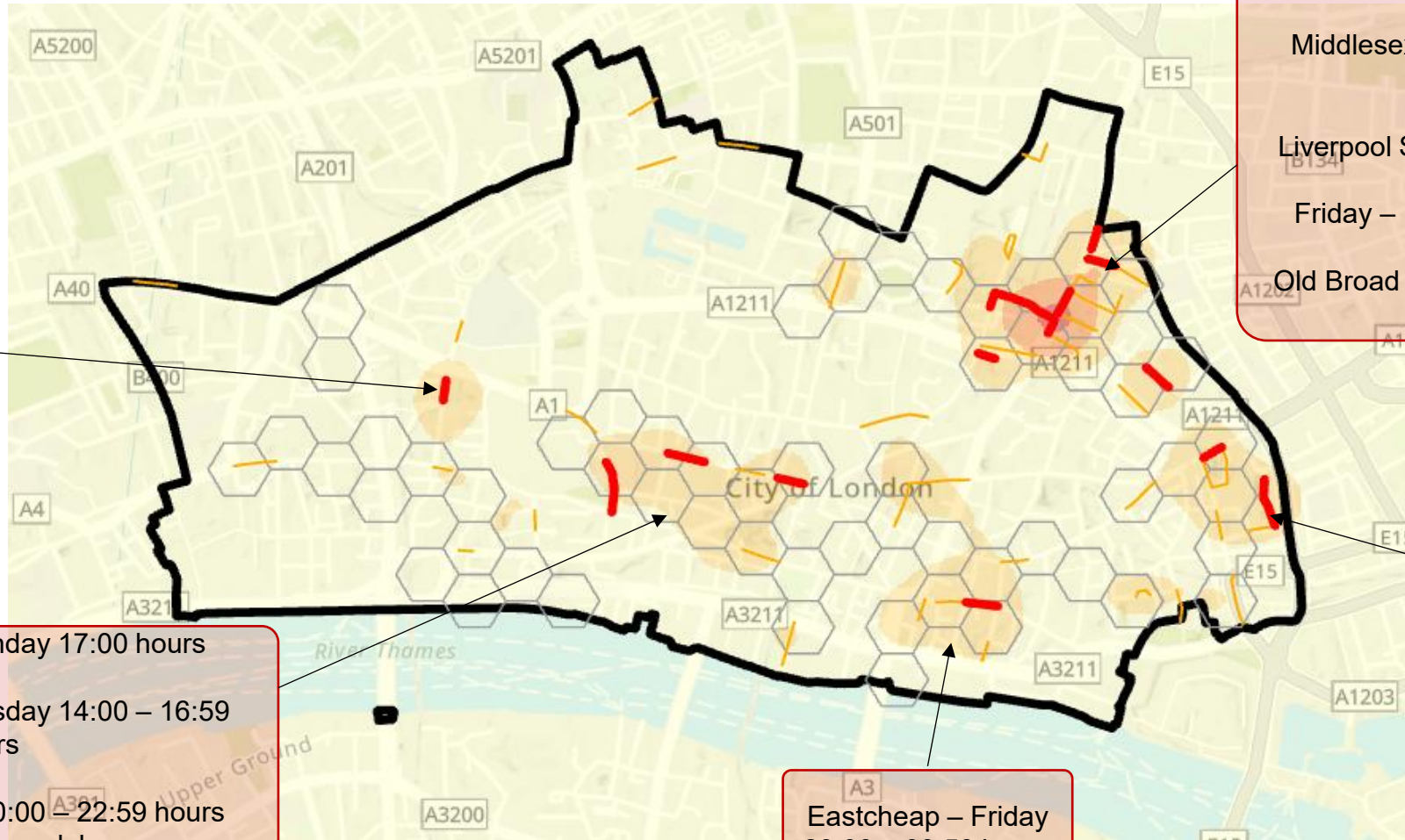
Bishopsgate – Saturday 23:00 – 00:59 hours

Middlesex Street – Friday 00:00 hours

Liverpool Street – Thursday 17:00 hours
Friday – 19:00 and 00:00 hours

Old Broad Street – Saturday 23:00 hours

Aldgate High Street – Monday 22:00 – 00:59 hours



Live, Work, Learn, Explore



Priority 3: Acquisitive Crime

Live, Work, Learn, Explore

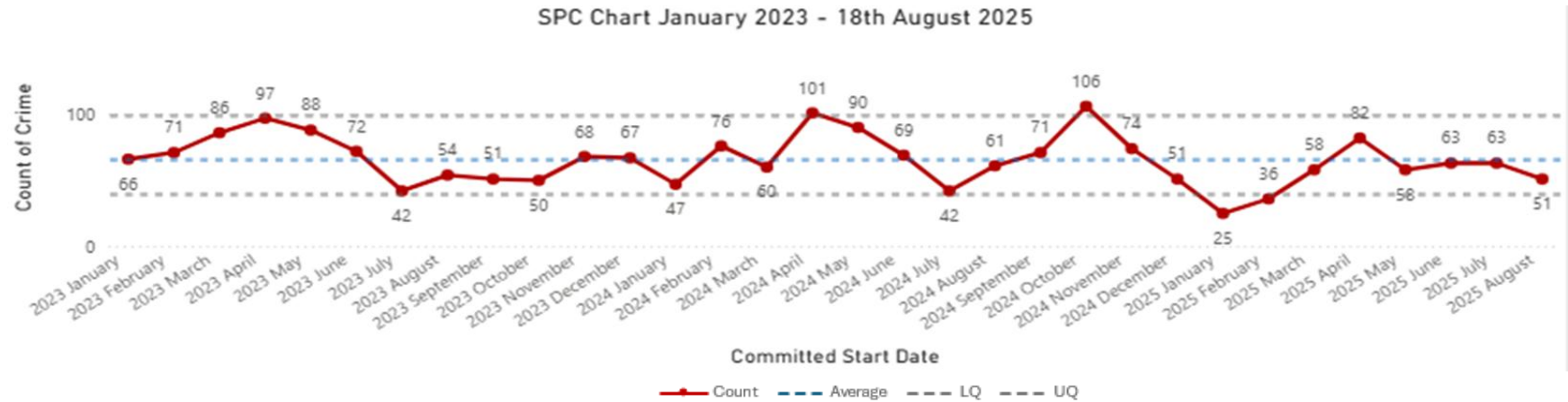


Acquisitive Crime - Snatch

80

Occurrences over last 4 weeks

The figure for July is sitting on the average line as it has done since May 2025.



Looking Back – Highlights from Previous Month

Key Findings:

- The Fleet Street Cluster remains the primary hotspot for July, Within this cluster, the most affected streets were FLEET ST and LUDGATE HILL.
- Peak day shifted from Wednesdays in June to Thursdays in July, with 28% of incidents occurring on this day.
- Peak hours remain consistent, with 12% of snatches occurring between 11PM-12AM.

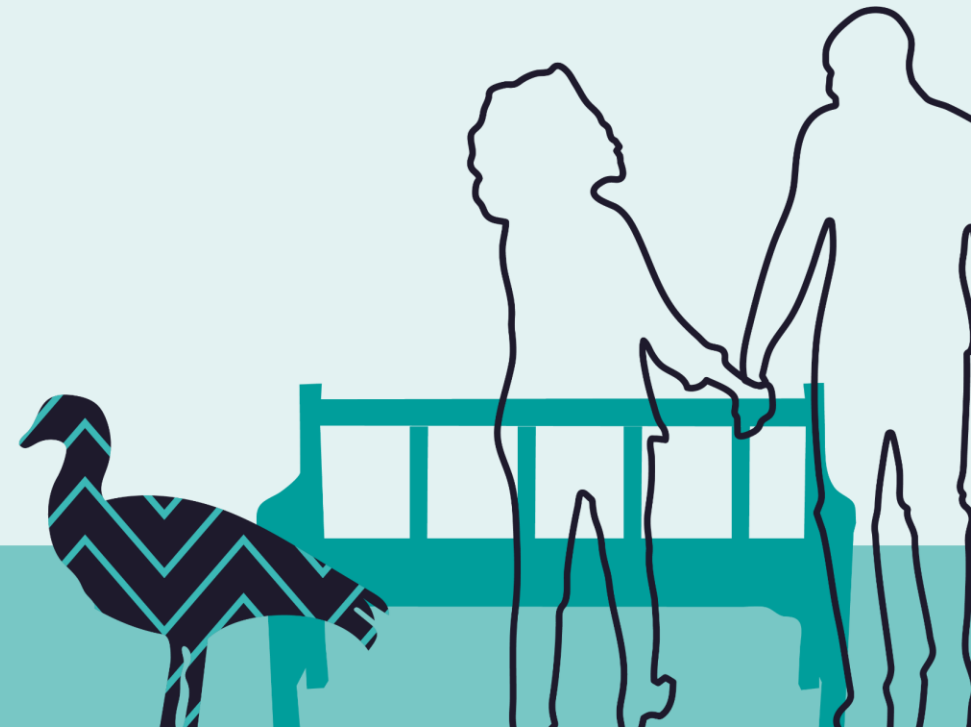
Looking Forward

- There may be possible seasonal patterns in snatch offences. Increases were observed in April 2023, April 2024 which falls in Spring & Oct 2024 which falls in Autumn. These seasons typically see more people outdoors due to milder weather potentially increasing snatch offences.
- In contrast, decreases were seen in Jan 2023 and Jan 2025 in Winter and July 2023 in Summer. The drop in July may be linked to summer holidays, with fewer commuters. Snatch figures are on the rise for August, however from looking at figures from the previous year there is an increase from September onwards, so we can prepare for a rise in snatch offences from August 2025 onwards.

Live, Work, Learn, Explore

Priority 4: Safer Public Spaces

Live, Work, Learn, Explore



Safer Public Spaces - Encampments

- Joint Working Group formed in June and embedded with partners.
- Monthly multi-agency days of action:
 - Register of all rough sleepers being developed.
 - 5th monthly partnership Day of Action took place 3rd September.
 - 16 Notices served, 14 tents removed to date.
- Live partner Teams channel tackling immediate and emerging issues.
- 30 tents across encampment spaces.



Live, Work, Learn, Explore



Safer Public Spaces - Encampments

- 173 Streetlink referral made (June – August 2025)
- 298 points of contact by Outreach team (June – August 2025)
- Chain Quarterly Report in July 2025 states a total of 259 rough sleepers (April – June 2025)
 - Reduction of 39 on previous year.



Live, Work, Learn, Explore



Safer Public Spaces - Encampments

- Standardised protocols being designed in partnership.
- Removal and storage of items overseen by operational steering group.
- Legal services engaged to develop proportionate enforcement process.
- White Lion Court currently being progressed to civil legal action.



Live, Work, Learn, Explore



Safer Public Spaces - ASB

- Data sharing project commenced – improving ASB data and analysis between City Corporation and City Police.
- Training:
 - ASB & Community Safety Level 2 Diploma, 18 staff and partners.
 - Problem-oriented Policing – Police and Community Safety Team.
 - MARAC Chair & Co-Chair Training completed by all relevant staff.



Live, Work, Learn, Explore



Prevent

Live, Work, Learn, Explore



Prevent

- Review of statutory duties taking place with Police and Home Office.
- Policy and Partnership Plan to be revised on completion of Review.
- Channel panel being co-located with Westminster Council from November.
- Staff statutory training platform rolled out.



Live, Work, Learn, Explore



Questions / Comments

Live, Work, Learn, Explore

