

City of London Corporation Committee Report

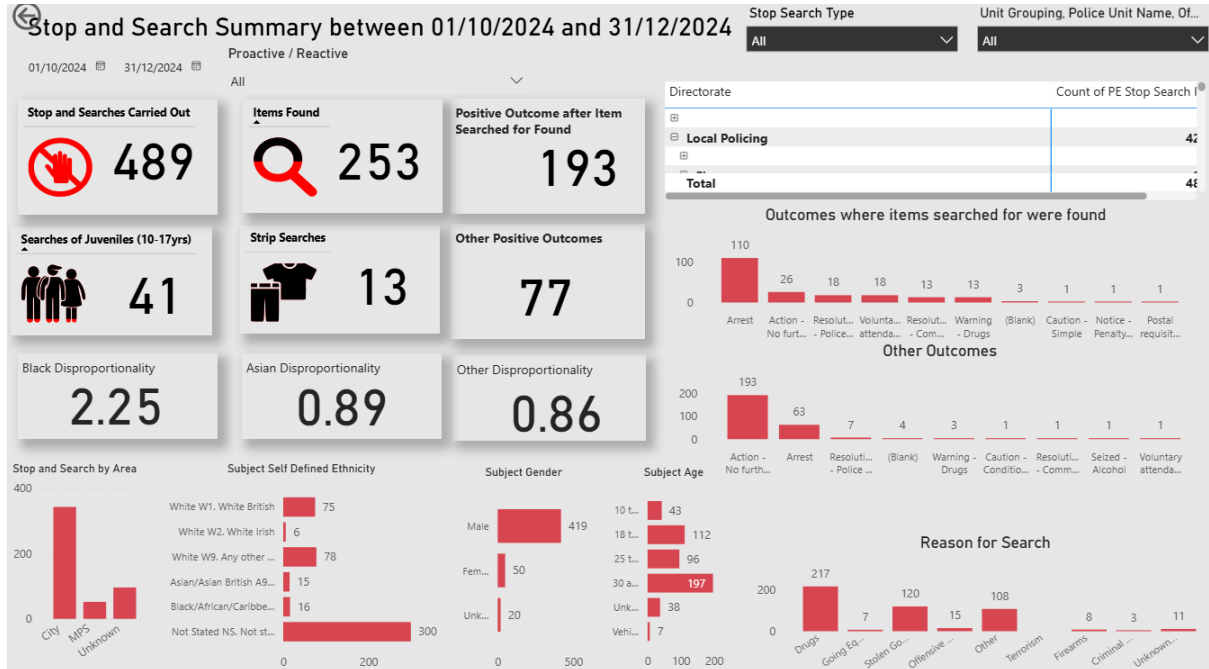
| | |
|---|---|
| Committee(s): Professionalism and Trust Committee - For information | Dated: 02/02/2026 |
| Subject: Stop & Search and Use of Force Quarter 3 Update and 2024/2025 Annual Comparisons | Public report: For Information |
| This proposal: <ul style="list-style-type: none"> • delivers Corporate Plan 2024-29 outcomes • provides statutory duties | Diverse Engaged Communities Providing Excellent Services |
| Does this proposal require extra revenue and/or capital spending? | No |
| If so, how much? | N/A |
| What is the source of Funding? | N/A |
| Has this Funding Source been agreed with the Chamberlain's Department? | No |
| Report of: | Commissioner P O'Doherty |
| Report author: | Supt J Wynne |

Q3 has seen a reduction in stop and search as the force responds to seasonal criminality with the CoLP area. Bag and cycle thefts continue to be more prevalent at this time of the year as well as licensed premises thefts/crime. CoLP ran Operation Tinsel to provide a safer City in the winter season and the full crime statistics are not yet published but are suspected to be favourable.

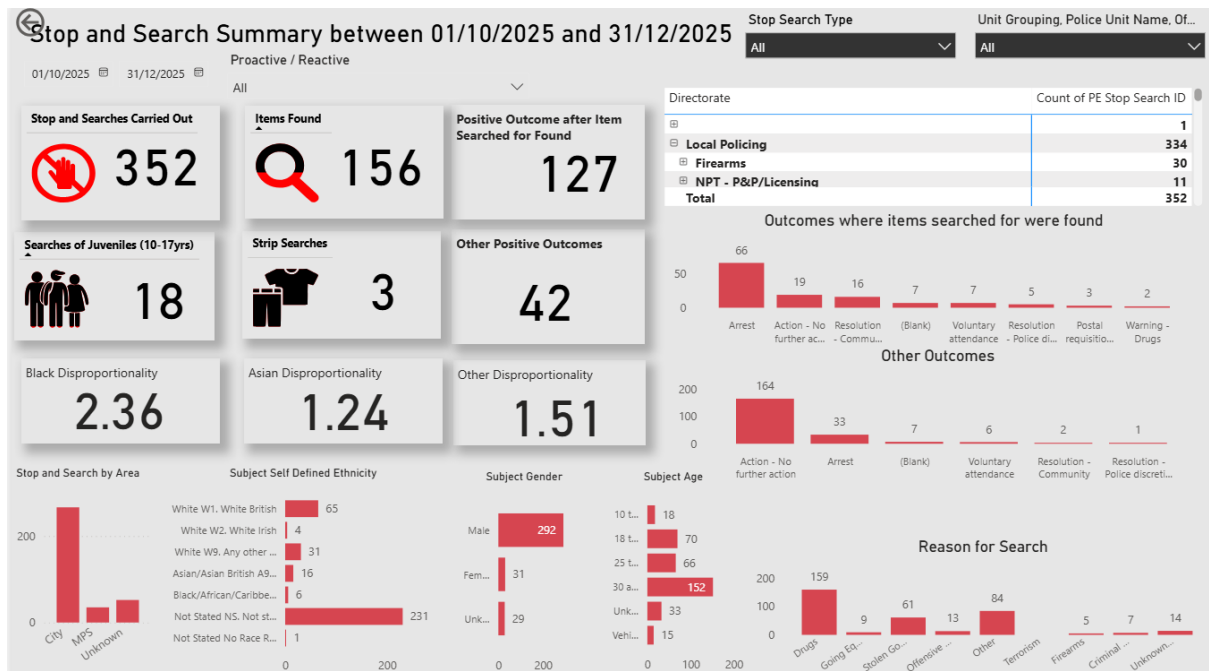
Operations continue in support of Pan London demonstrations as the political situation remains fluid globally. Significant numbers of officers were deployed to Notting Hill carnival at the intervention points which has also increased our stop search figures for the previous quarter, this has affected the annual figures with regards to disproportionality of persons stopped. The figures for Notting Hill Carnival have been included in this report to provide context for the calendar year figures.

Stop and Search

Q3 Results 2024



Q3 results 2025



Total searches ↓ by 137

Search involving youth people ↓ by 23

Outcome rate ↓ by 4.2% (55.2% to 48%)

Disparity rates: Black ↑ by 0.11 Asian ↑ by 0.35 Other ↑ by 0.6

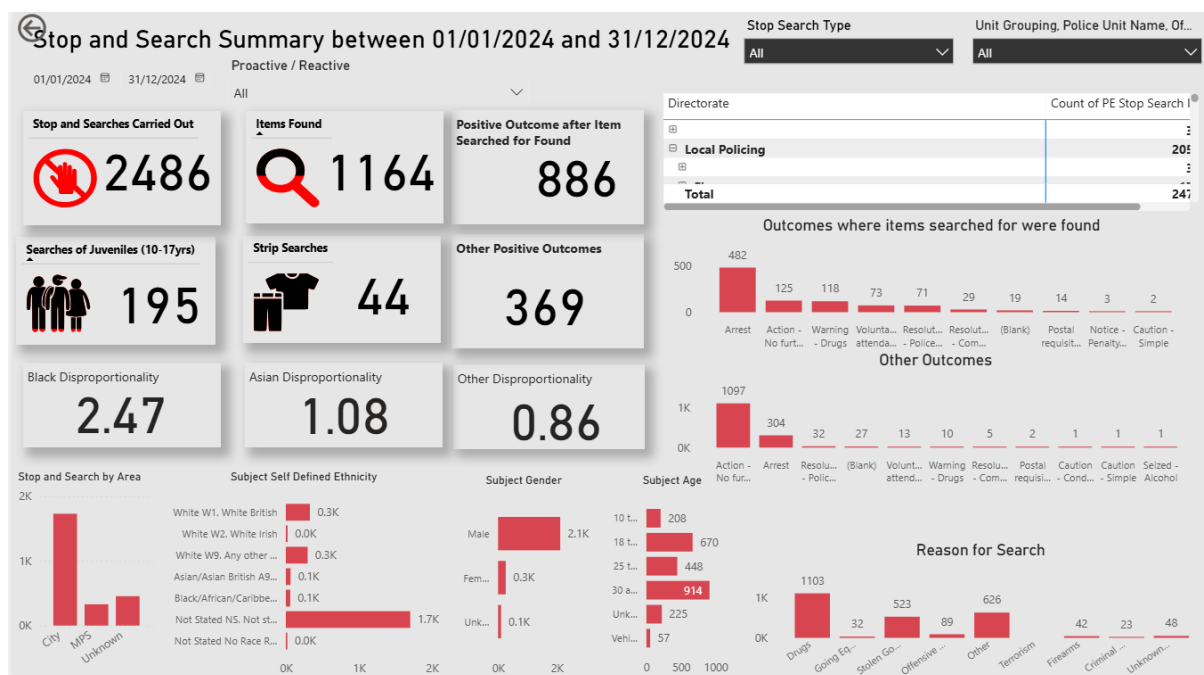
Summary: Overall searches continue to fall, this is overly represented in a larger fall of stop and search within the youth category. This has been a focus of training in the second half of 2025 as CoLP seeks to improve its performance when dealing with suspected youth offenders.

A marginal drop in outcome rates but still very close to the working outcome rate of 50%.

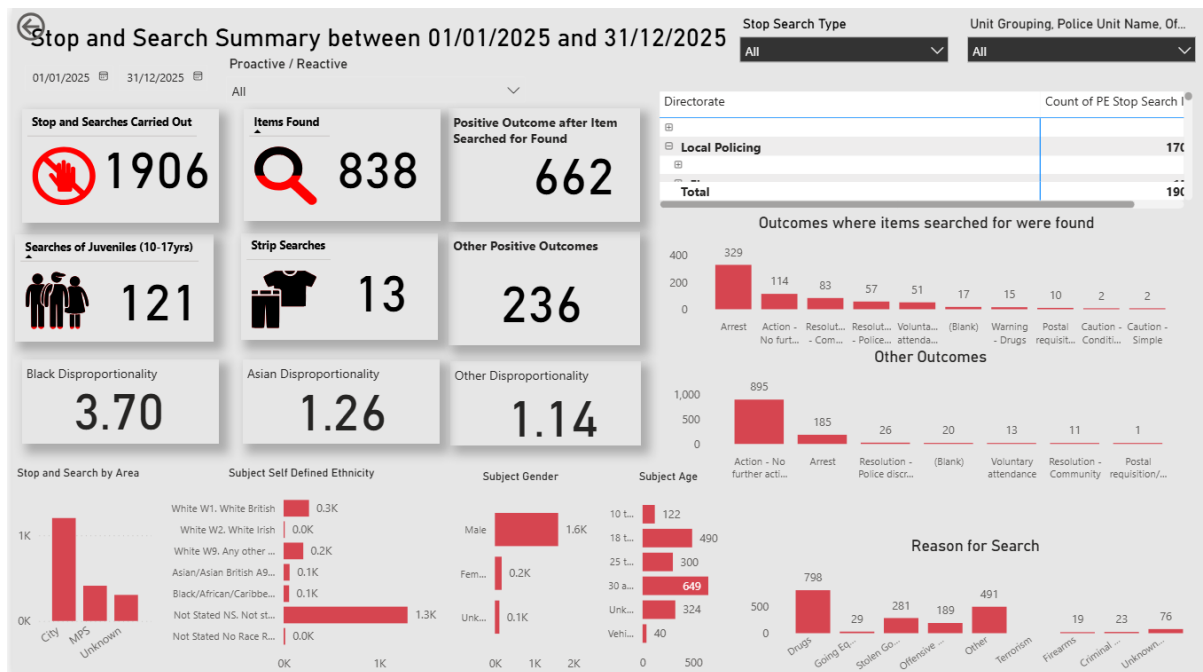
Slight increases in searches on those identified as Black, Asian or other ethnicities, not out of the norm for quarterly variations.

2024 – 2025 comparisons

2024



2025



Total searches ↓ by 580

Searches involving youth people ↓ by 74

Outcome rates ↓ by 3.4% (from 50.5 to 47.1%)

Disparity rates: Black ↑ by 1.23 Asian ↑ by 0.18 Other ↑ by 0.28

Summary:

Overall searches continue to fall; this is overly represented in a larger fall of stop and search within the youth category. This has been a focus of training in the second half of 2025 as CoLP seeks to improve its performance when dealing with suspected youth offenders.

A marginal drop in outcome rates but still very close to the working outcome rate of 50%.

Slight increases in searches on those identified as Black, Asian or other ethnicities, not out of the norm for quarterly variations.

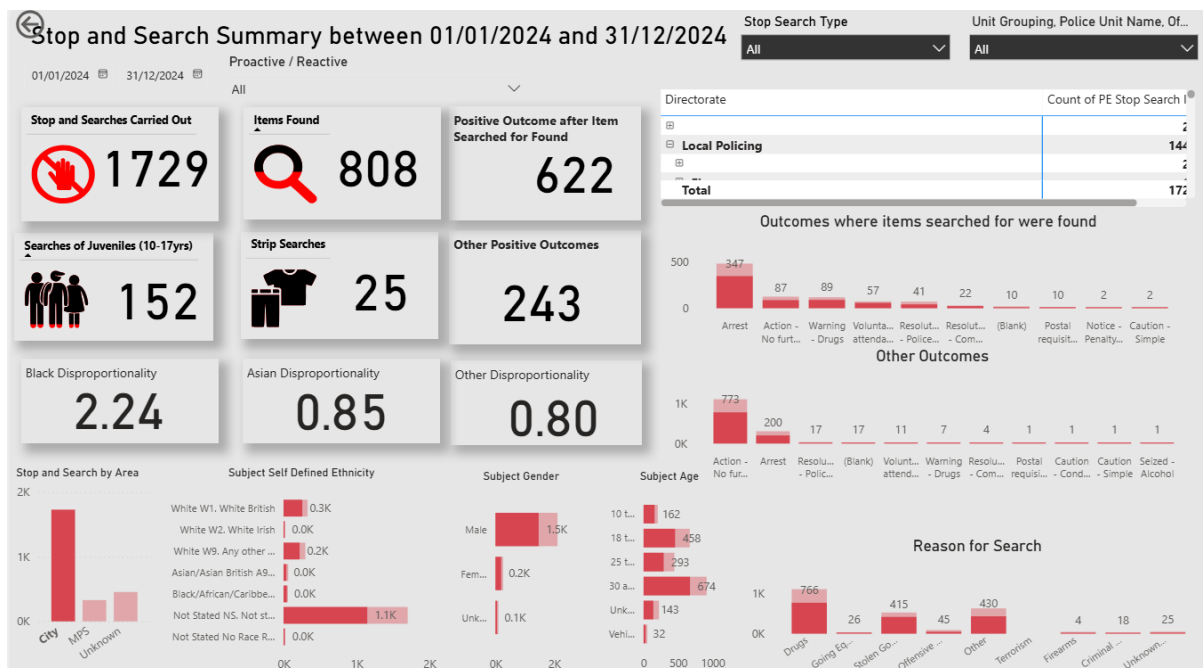
Summary: As seen with the quarterly trends, stop and search numbers continue to fall. However, outcomes rates are only marginally down and still in the 50% region. As a real positive, CoLP continues to search far less young people.

The increase in disproportionality would invite questions regarding the rises, particularly in those that are searched and identified as being black. This is largely down to CoLP assistance at the Notting Hill Carnival where CoLP officers searched 250 persons on the 24th and 25th of August 2025. Those that were stopped and searched were predominantly identified as black, almost all searches were under a Section 60 authorised by the Metropolitan Police.

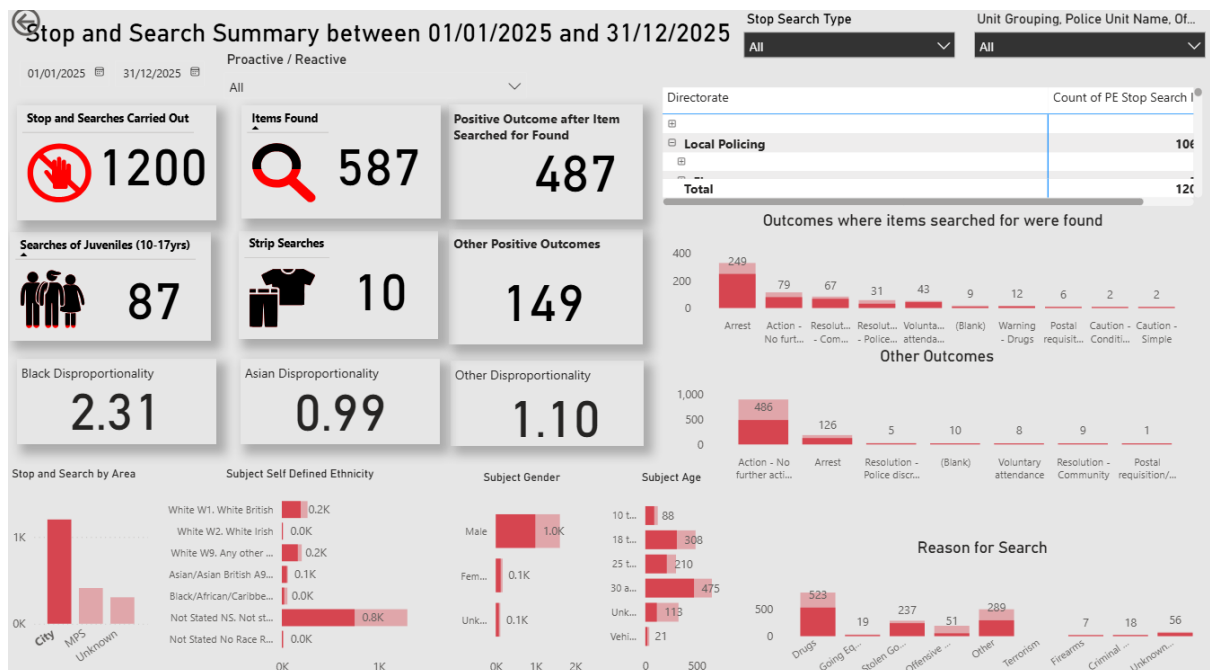
CoLP has looked at the overall figures as it should do following the authorisation of a Section 60. This was part of an incredibly successful operation resulting in the seizure of a number of weapons – more importantly no lives lost at this years event compared to 3 the previous year. This was a strategic decision on tactics used and is Metropolitan Police driven.

Stop and Search within the City only

2024



2025



As a comparator – the overall figures above have removed all of the searches outside the City of London, including the Notting Hill Carnival figures.

Total searches ↓ by 529

Searches involving **youth people** ↓ by 65

Outcome rates ↓ by 3.1% (49.9 to 53%)

Disparity rates: Black ↑ by 0.7 Asian ↑ by 0.14 Other ↑ by 0.30

Disparity rates up by very slight margins.

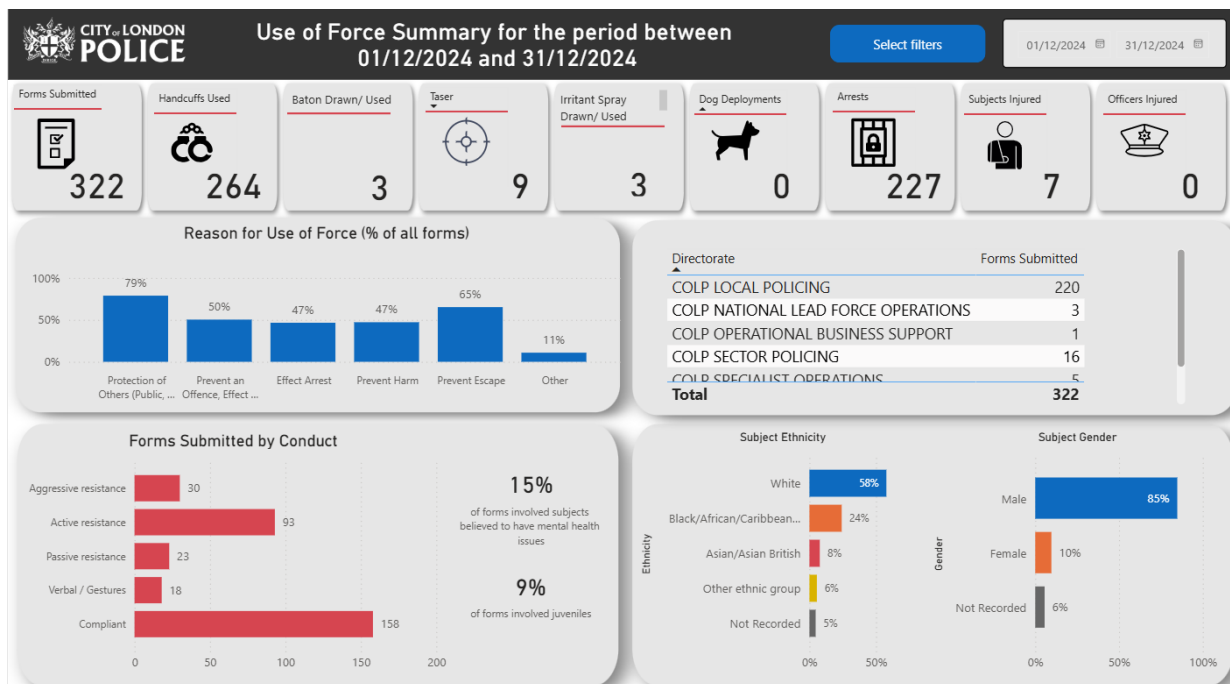
Use of Force

Data issue – coding issues has meant that December 2025 Ude of Force figures are unavailable. The figures for December 2025 have been manually counted:

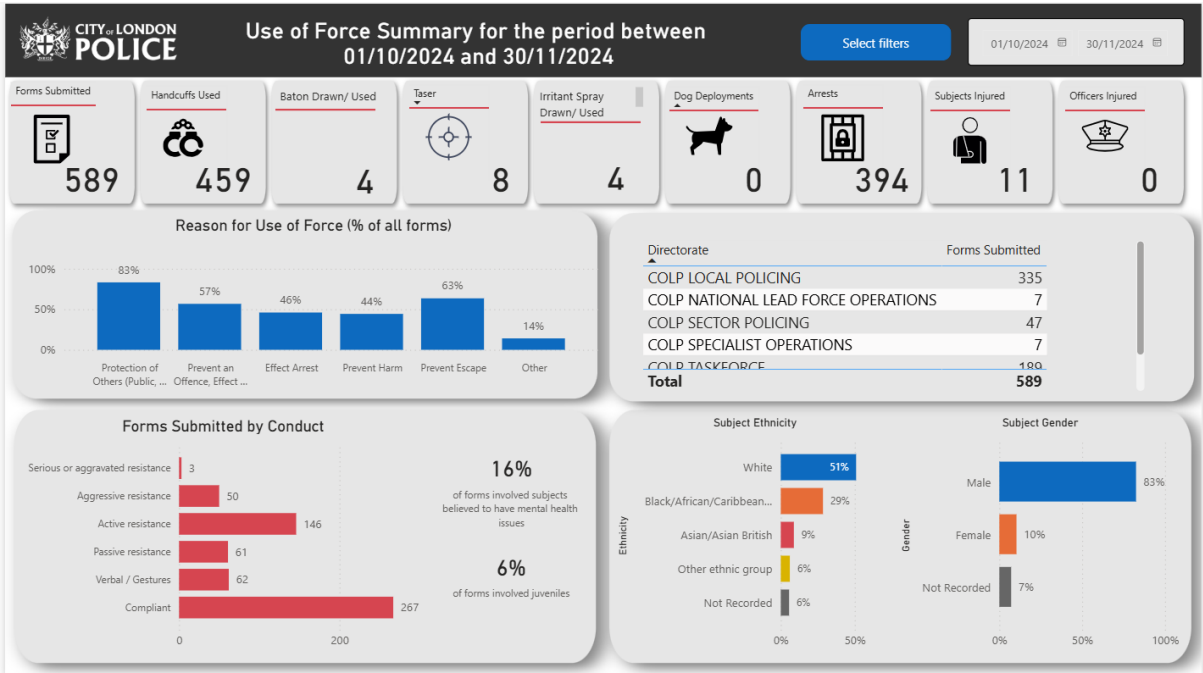
December 2025

| <u>Use of Force Summary</u> | <u>Count - Dec 2025</u> |
|-----------------------------|-------------------------|
| Forms Submitted | 242 |
| Handcuffs Used | 168 |
| Baton Drawn/Used | 3 |
| Taser Dec 2025 | 3 |
| Irritant Spray Drawn / Used | 3 |
| Dog Deployments | 0 |
| Arrests | 160 |
| Subjects Injured | 2 |
| Officers Injured | 4 |

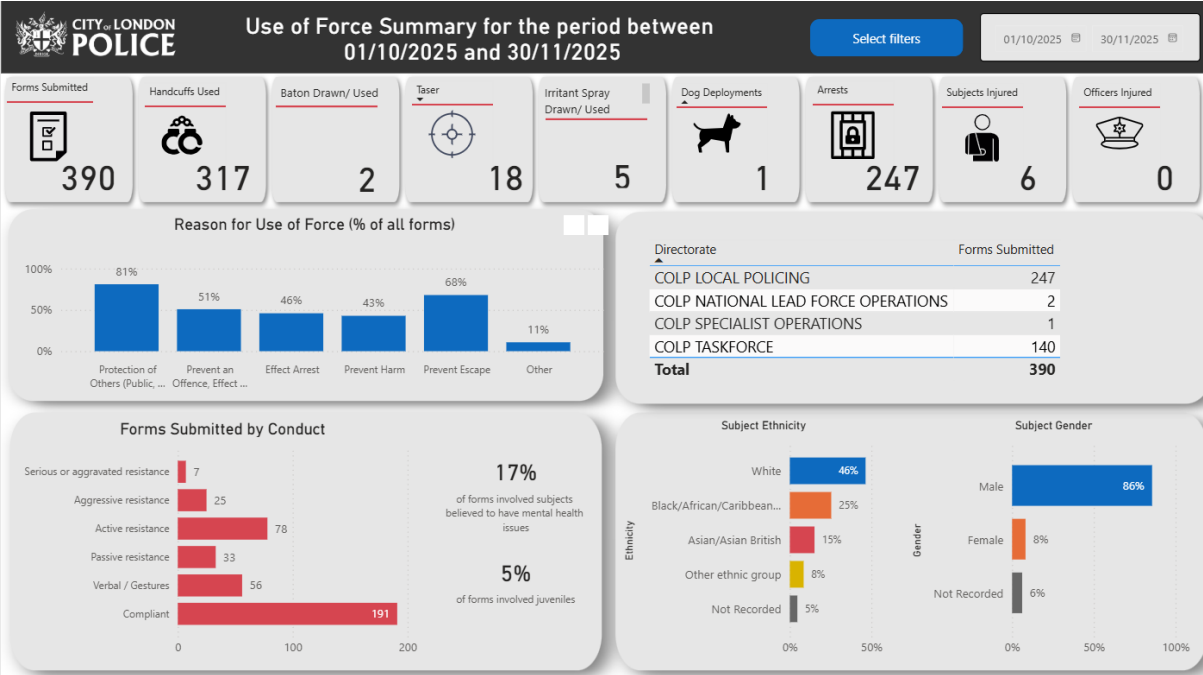
December 2024



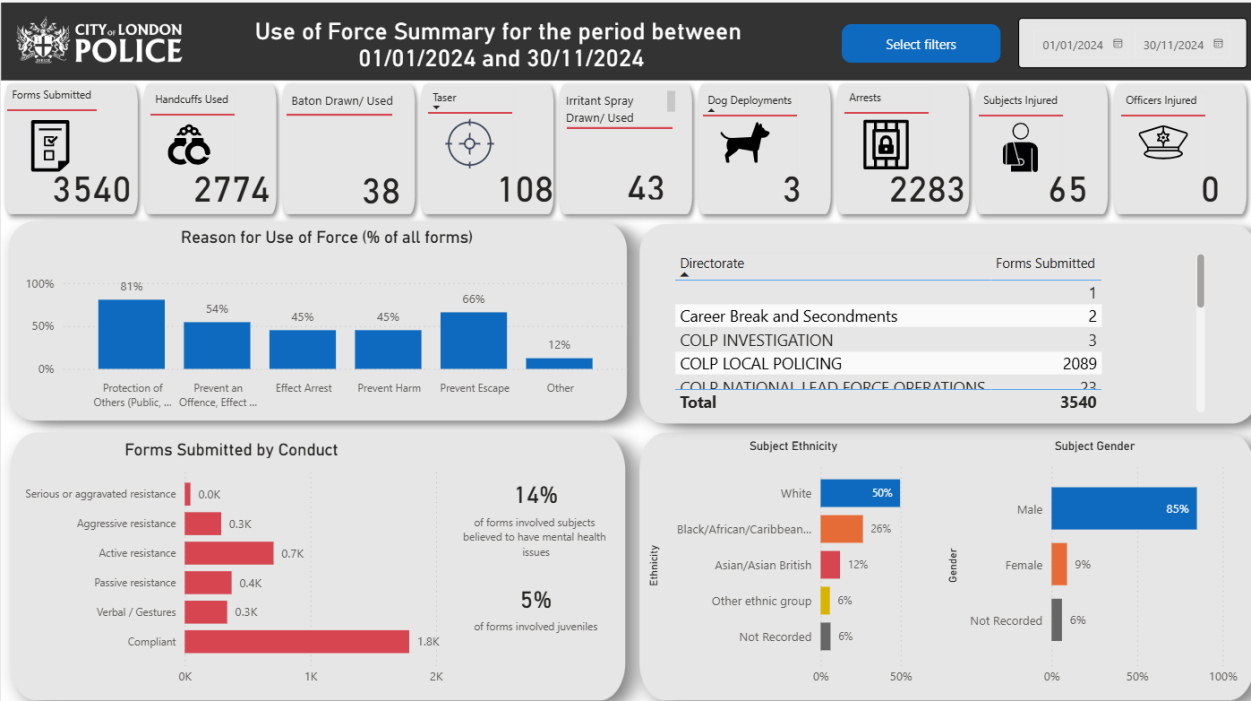
Oct - Nov 2024



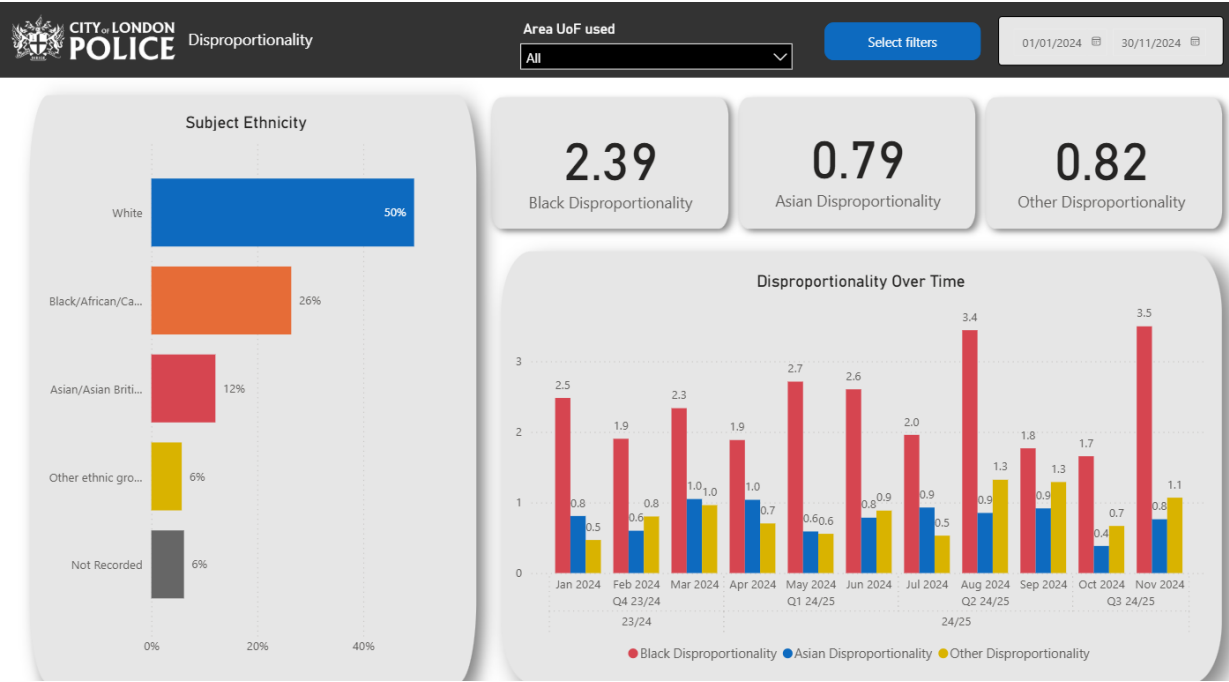
Oct - Nov 2025



Jan – Nov 2024



Use of Force Disproportionality 2024



Disproportionality Over Time

Jan 2024

2.5

0.8

0.5

Feb 2024

1.9

0.6

0.8

Mar 2024

2.3

1.0

1.0

Apr 2024

1.9

1.0

0.7

May 2024

2.7

0.6

0.6

Jun 2024

2.6

0.8

0.9

Jul 2024

2.0

0.9

0.5

Aug 2024

3.4

0.9

1.3

Sep 2024

1.8

0.9

1.3

Oct 2024

1.7

0.4

0.7

Nov 2024

3.5

0.8

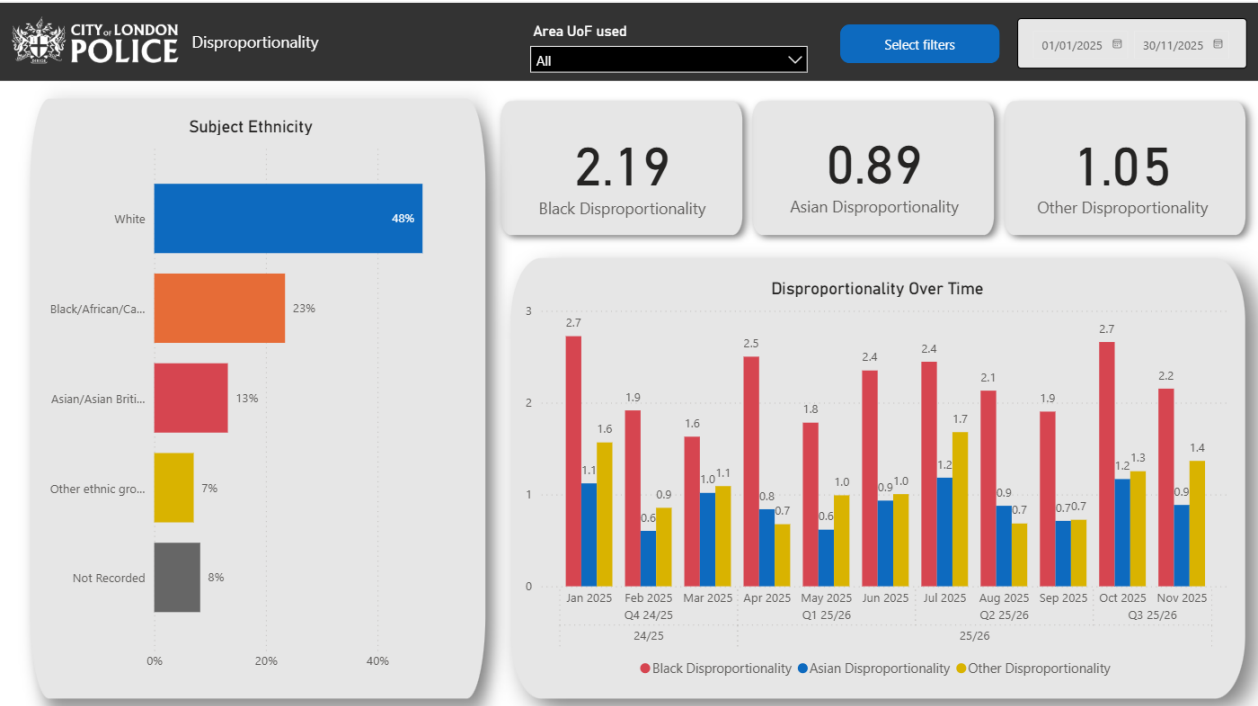
1.1

Black Disproportionality

Asian Disproportionality

Other Disproportionality

Use of Force Disproportionality 2025



Disproportionality Over Time

Jan 2025

2.7

1.1

1.6

Feb 2025

1.9

0.6

0.9

Mar 2025

1.6

1.0

1.1

Apr 2025

2.5

0.8

0.7

May 2025

1.8

0.6

1.0

Jun 2025

2.4

0.9

1.0

Jul 2025

2.4

1.2

1.7

Aug 2025

2.1

0.9

0.7

Sep 2025

1.9

0.7

0.7

Oct 2025

2.7

1.2

1.3

Nov 2025

2.2

0.9

1.4

Black Disproportionality

Asian Disproportionality

Other Disproportionality