
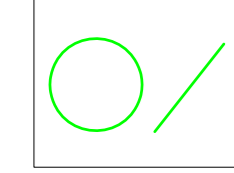
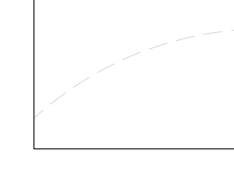
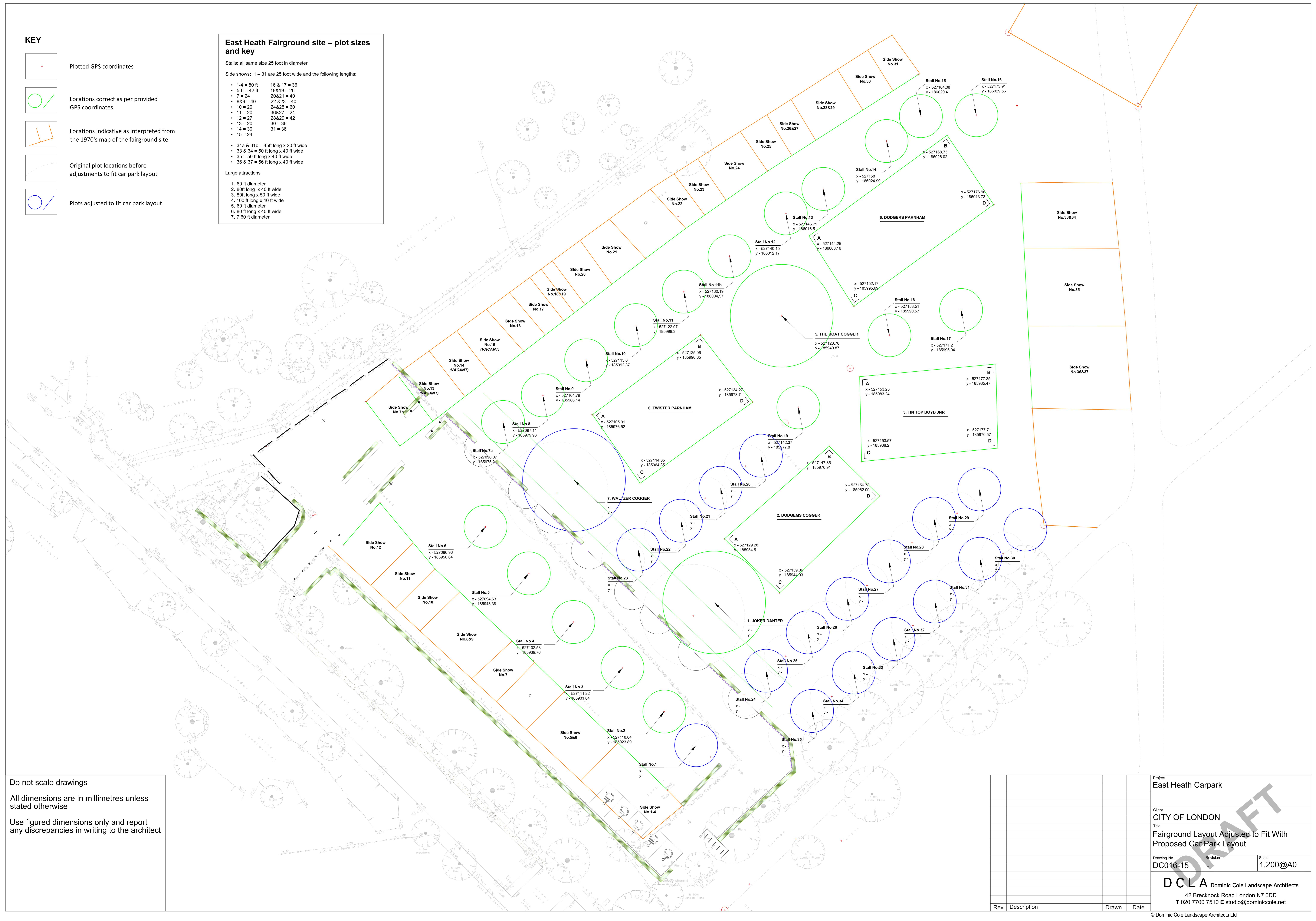


KEY

-  Plotted GPS coordinates
-  Locations correct as per provided GPS coordinates
-  Locations indicative as interpreted from the 1970's map of the fairground site
-  Original plot locations before adjustments to fit car park layout
-  Plots adjusted to fit car park layout

East Heath Fairground site – plot sizes and key

- Stalls: all same size 25 foot in diameter
- Side shows: 1 – 31 are 25 foot wide and the following lengths:
- 1-4 = 80 ft 16 & 17 = 36
 - 5-6 = 42 ft 18&19 = 26
 - 7 = 24 20&21 = 40
 - 8&9 = 40 22 &23 = 40
 - 10 = 20 24&25 = 60
 - 11 = 20 26&27 = 24
 - 12 = 27 28&29 = 42
 - 13 = 20 30 = 36
 - 14 = 30 31 = 36
 - 15 = 24
- 31a & 31b = 45ft long x 20 ft wide
 - 33 & 34 = 50 ft long x 40 ft wide
 - 35 = 50 ft long x 40 ft wide
 - 36 & 37 = 56 ft long x 40 ft wide
- Large attractions
1. 60 ft diameter
 2. 80ft long x 40 ft wide
 3. 80ft long x 50 ft wide
 4. 100 ft long x 40 ft wide
 5. 60 ft diameter
 6. 80 ft long x 40 ft wide
 7. 7 60 ft diameter



Do not scale drawings

All dimensions are in millimetres unless stated otherwise

Use figured dimensions only and report any discrepancies in writing to the architect

Project		East Heath Carpark	
Client		CITY OF LONDON	
Title		Fairground Layout Adjusted to Fit With Proposed Car Park Layout	
Drawing No.	Revision	Scale	
DC016-15		1.200@A0	
DCLA Dominic Cole Landscape Architects 42 Brecknock Road London N7 0DD T 020 7700 7510 E studio@dominiccole.net			
Rev	Description	Drawn	Date