



Heath Hands
 The Dairy, Kenwood House
 Hampstead Lane, London
 NW3 7JN

020 8458 9102
 info@heath-hands.org.uk

Heath Hands Summary Report February 2017

Heath Hands was formed in 1999 to, among other things, help preserve and enhance the special character of Hampstead Heath and the Kenwood Estate. Our volunteers support City of London Corporation and English Heritage staff in conservation, learning, ecology and public event activities.

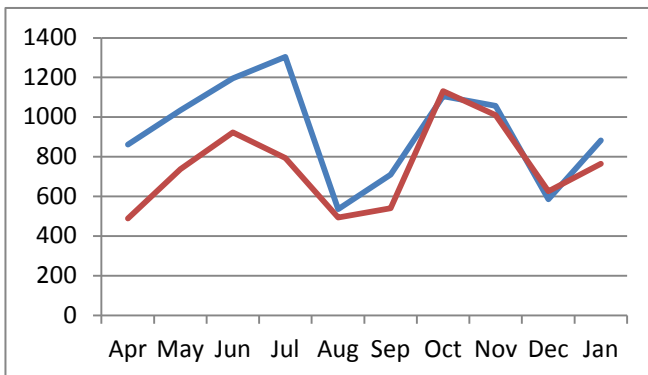
Highlights of 2017

- Special General Meeting held in February 2017 and vote passed to initiate process to become a charitable incorporated organisation (CIO)
- Partnership agreement, including arrangements for the secondment of employee, signed with CoL in October 2016
- adopted a policy for appropriate use of our financial reserves
- applied for a CoL central grant to launch an outreach project to encourage underrepresented groups to become involved in recreation and volunteering on the Heath
- August 2016 the charity reached 100,000 hours of volunteering since our founding. The milestone was marked with a celebration at Kenwood with volunteers (new and old), friends, CoL and EH staff and local dignitaries
- largest ever monthly volunteering contribution in July with over 1300 hours achieved
- volunteer led conservation sessions at Whitestone Garden and Old Orchard Garden (formerly Ecofield) launched
- annual membership survey completed to inform decision making and update diversity and wellbeing records

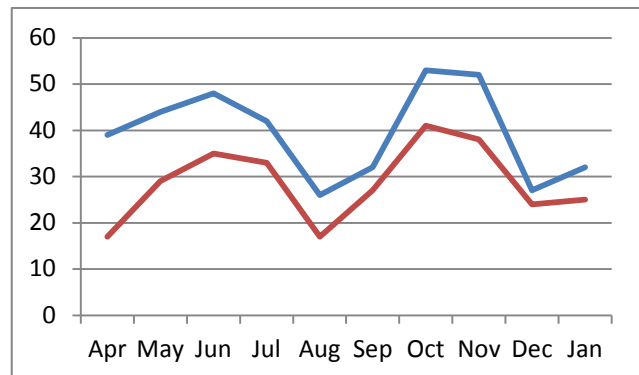
Volunteer Activity (from April 2016 until end January 2017)

- A total of 9272 hours have been contributed by volunteers in all roles compared to 7509 over same period in 2015/16
- A total of 395 volunteer sessions have been run across all sites compared to 286 over same period in 2015/16

Graph 1: Monthly volunteering contribution 2016/17 in blue, 2015/16 in red



Graph 2: Monthly volunteer sessions delivered 2016/17 in blue, 2015/16 in red





Membership Activity

-Membership is 201 (increased from 190 in April 2016) with 77% (increased from 72% in April 2016) being active volunteers (attending monthly) as of February 2017

-76 new volunteers have joined in 2016/17 with 72% continuing for more than 3 months

Fig 1. Membership roles (%)

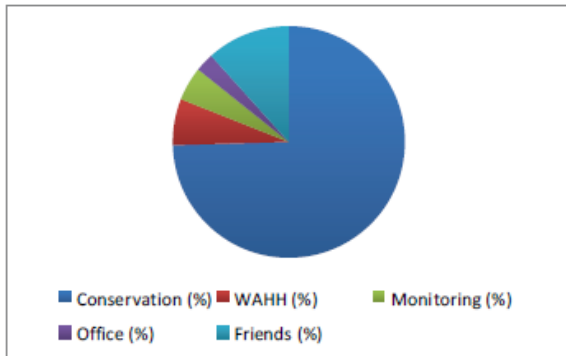


Fig 2. Membership Activity

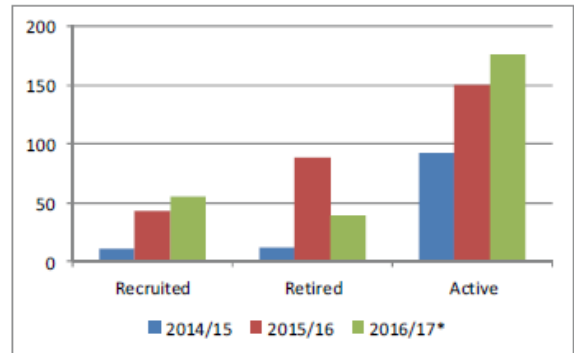


Fig 3. Members from BAME vs. White backgrounds (target 36%)

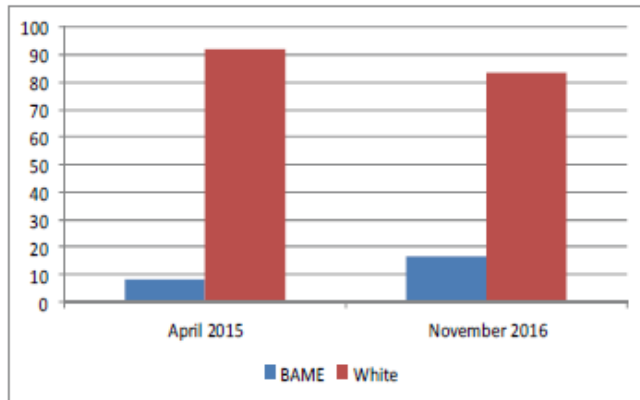
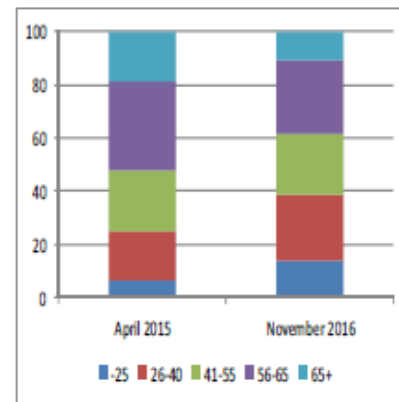


Fig 4. Age Structure (%)



Upcoming Highlights

- initiate the formal process to become a CIO
- publish Heath Hands Strategic Plan (to 31st March 2020) in April 2017
- launch of Friends of Heath Hands group, allowing wider public to support our volunteering activities
- surpass annual total of 10,000 hours of volunteering activity for first time