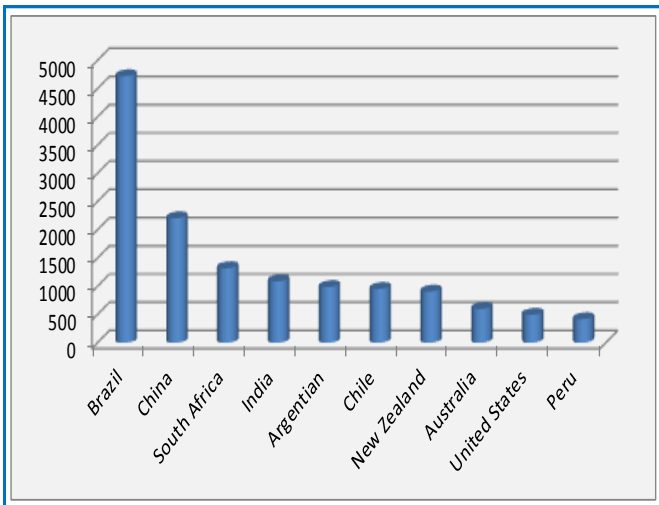




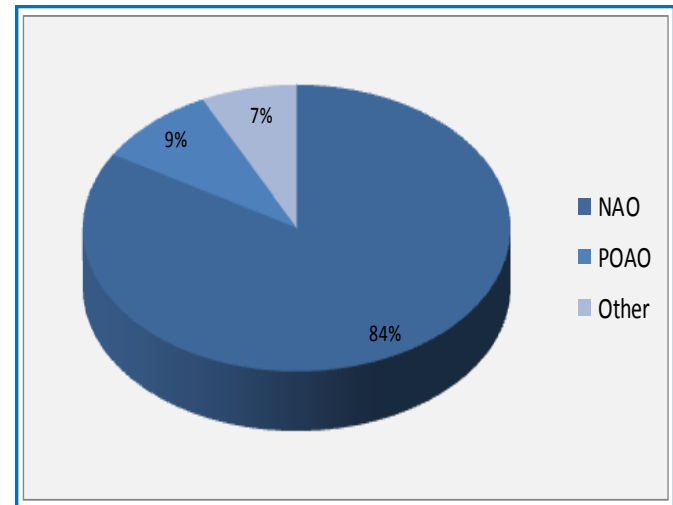
London Port Health Authority—Profile



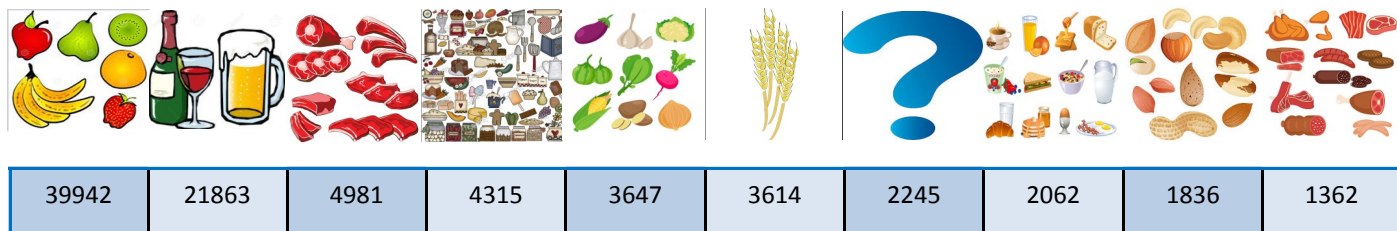
Imports are received from over 129 different countries but the top 10 country's for imports subject to Port Health checks in the last 12 months are:



Imports are classified into 3 main types, Non Animal Origin (NAO), Product of Animal Origin (POAO) and Other. The distribution over the last 12 months has been:



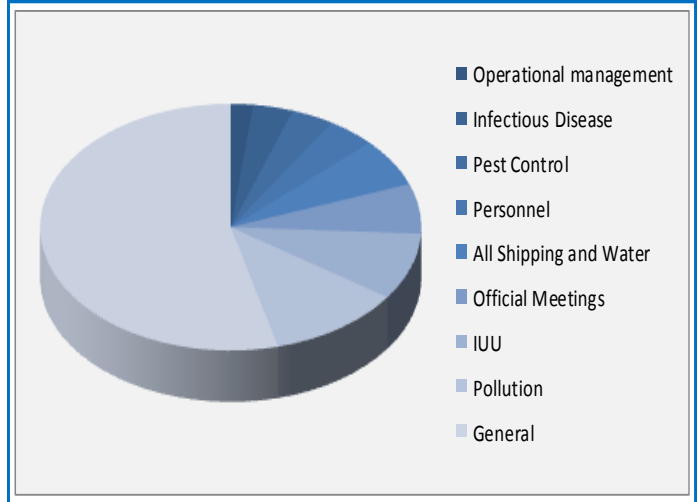
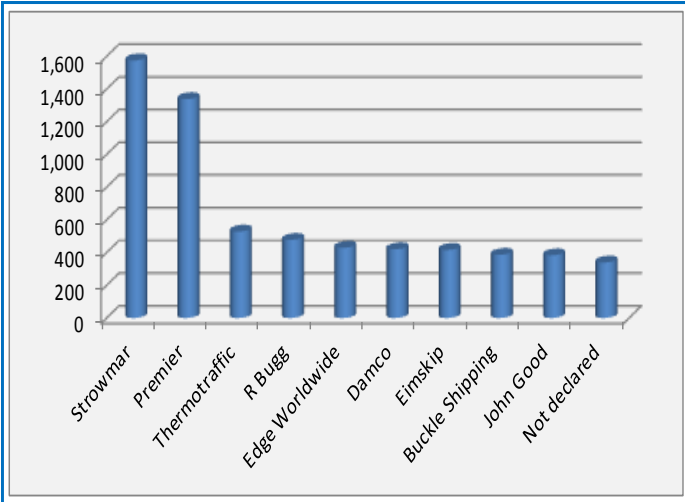
A variety of different food and feed products are received at the City of London ports with the top 10 consignments being:



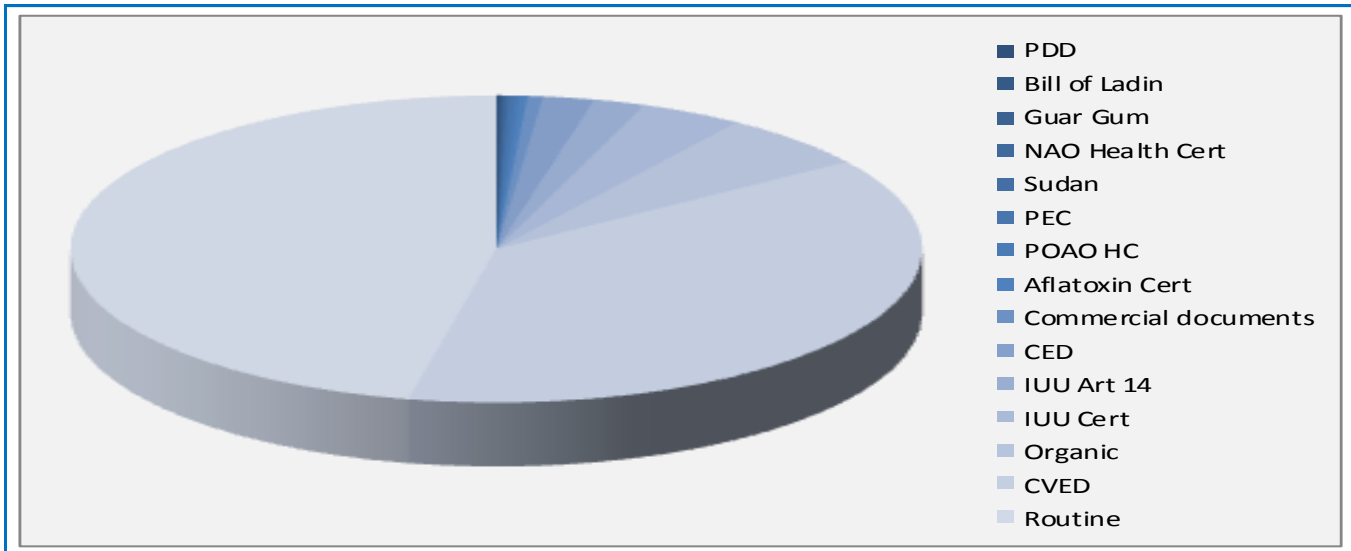
Food imports are categorised into 23 groups and staff working in the Port Health Authority recorded and classified 90445 food and feed imports in the last 12 months.

Port Health staff have dealt with over 641 different clearance agents during the last 12 months with the top 10 customers, in terms of jobs created being:

Aside from Imported Food, Port Health also includes other operational and official controls which have no relation to imported food. These areas are :



Port Health staff have created over 19000 import records for consignments arriving through the ports. These "jobs" can be classified by their official import controls:



Ports under the control of the City of London service 33 different shipping lines. 26 of these lines carry cargo from third countries. The following shows the arrival frequency of the top 10 during the last 12 months:

